

Unit	Material Number	Item Quantity	Item Description
a	2000155	1	Bracket House
b	*2000259	1	Clamp Wedge 4 to 6
c	*2000258	1	Clamp Wedge 1/0 to 4
d	*2000260	1	Clamp Wedge 4/0 to 2/0

*Denotes "Grab Bag" item.

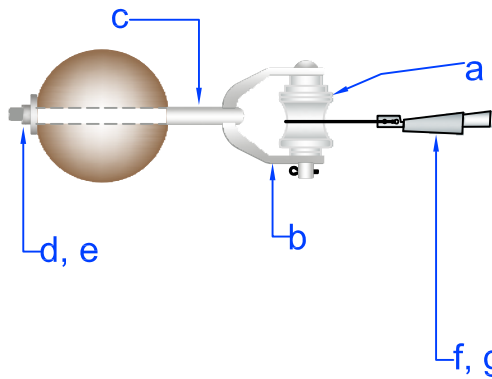


PEDERNALES ELECTRIC
COOPERATIVE, INC.
CONSTRUCTION ASSEMBLY UNIT

Service Assembly House Bracket

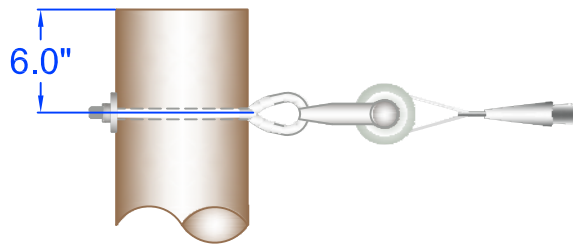
drawn:	approved	date:
REB	MJB	March 23, 2012

K10

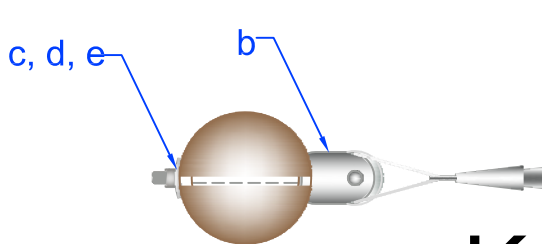


Top View
Top View

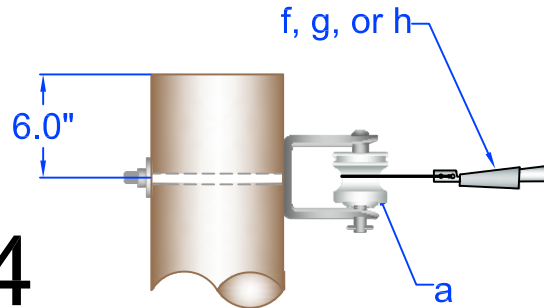
K11



Side View
Side View



K14



Note: When installing K11 or K14 in a service or meter pole install them in the hole 6" from the top of the pole (the second hole from the top of the pole).

Unit	Item	Material Number	Item Quantity	Item Description
K11	a	2000543	1	Insulator Spool CI 53-1
	b	2000264	1	Clevis Service Swinging
	c	*	1	Bolt Eye 5/8"
	d	3000240	1	Washer Sq 2 1/4
	e	3000053	1	Locknut 5/8" MF
K14	a	2000543	1	Insulator Spool CI 53-1
	b	2000263	1	Clevis Service DE
	c	*	1	Bolt Machine 5/8"
	d	3000240	1	Washer Sq 2 1/4
	e	3000053	1	Locknut 5/8" MF

Wedge Clamps

Item	Material Number	Item Description
f	*2000259	Clamp Wedge 4 to 6
g	*2000258	Clamp Wedge 1/0 to 4
h	*2000280	Clamp Wedge 4/0 to 2/0

*Denotes "Grab Bag" item

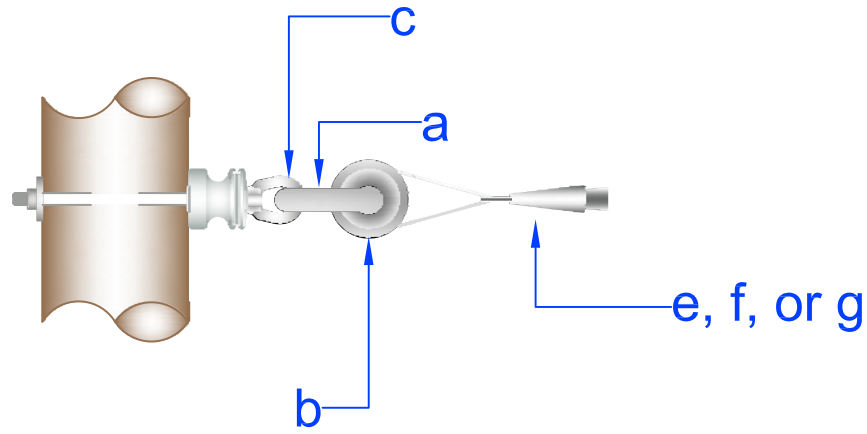


PEDERNALES ELECTRIC
COOPERATIVE, INC.
CONSTRUCTION ASSEMBLY UNIT

Service Assemblies

drawn: REB	approved MJB	date: March 23, 2012
---------------	-----------------	-------------------------

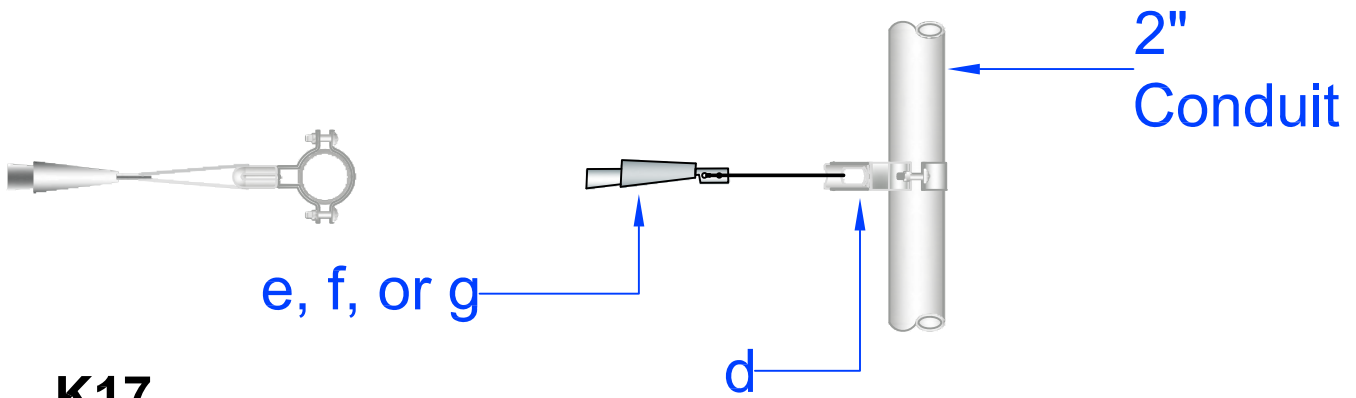
K11/K14



K15

Top View

Side View



K17

Unit	Item	Material Number	Item Quantity	Item Description
K15	a	2000264	1	Clevis Service Swinging
	b	2000543	1	Insulator Spool CI 53-1
	c	*2000610	1	Nut Eye 5/8"
K17	d	2000160	1	Bracket Pipe Mt 1 1/4"-2 1/2"

Wedge Clamps

Item	Material Number	Item Description
e	*2000259	Clamp Wedge 4 to 6
f	*2000258	Clamp Wedge 1/0 to 4
g	*2000260	Clamp Wedge 4/0 to 2/0

*Denotes Grab Bag Items

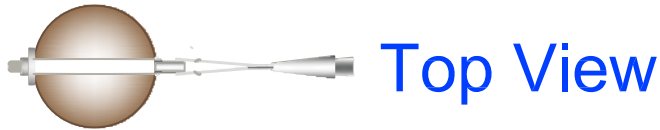


PEDERNALES ELECTRIC
COOPERATIVE, INC.
CONSTRUCTION ASSEMBLY UNIT

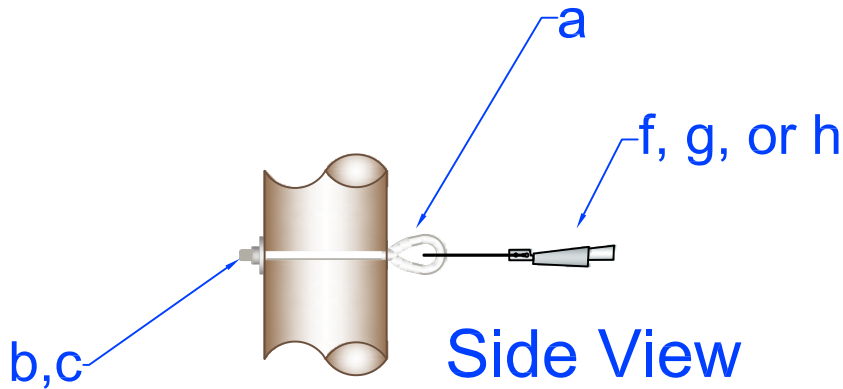
Service Assemblies

drawn:	approved	date:
REB	MJB	March 30, 2012

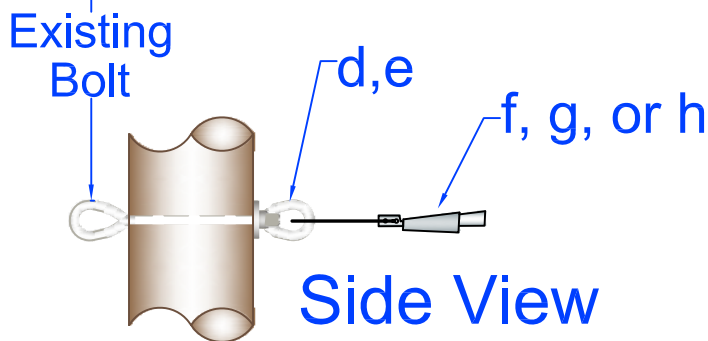
K15/K17



K18



K19



Unit	Item	Material Number	Item Quantity	Item Description
K18	a	*	1	Bolt Eye 5/8"
	b	*3000240	1	Washer Sq F 2 1/4
	c	*3000153	1	Locknut 5/8" MF
K19	d	*2000610	1	Nut Eye 5/8"
	e	*3000153	1	Locknut 5/8" MF

Wedge Clamps

Item	Material Number	Item Description
f	*2000259	Clamp Wedge 4 to 6
g	*2000258	Clamp Wedge 1/0 to 4
h	*2000260	Clamp Wedge 4/0 to 2/0

*Denotes Grab Bag Items

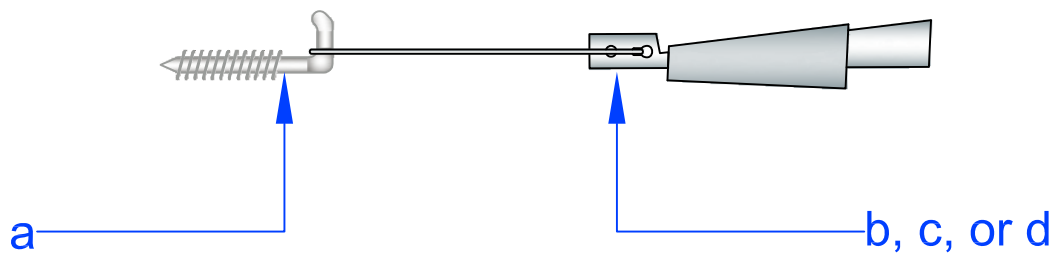


PEDERNALES ELECTRIC
COOPERATIVE, INC.
CONSTRUCTION ASSEMBLY UNIT

Service Assemblies

drawn:	approved	date:	K18/K19
REB	MJB	March 30, 2012	

Removal Only



Unit	Item	Material Number	Item Quantity	Item Description
KDHC	a	2000502	1	Hook Drive 7/16 x 4 3/4
Wedge Clamps				
Item	Material Number	Item Description		
b	*2000259	Clamp Wedge 4 to 6		
c	*2000258	Clamp Wedge 1/0 to 4		
d	*2000260	Clamp Wedge 4/0 to 2/0		
*Denotes "Grab Bag" item				



PEDERNALES ELECTRIC
COOPERATIVE, INC.
CONSTRUCTION ASSEMBLY UNIT

Service Assembly

drawn:	approved	date:
REB	MJB	March 30, 2012

KDHC