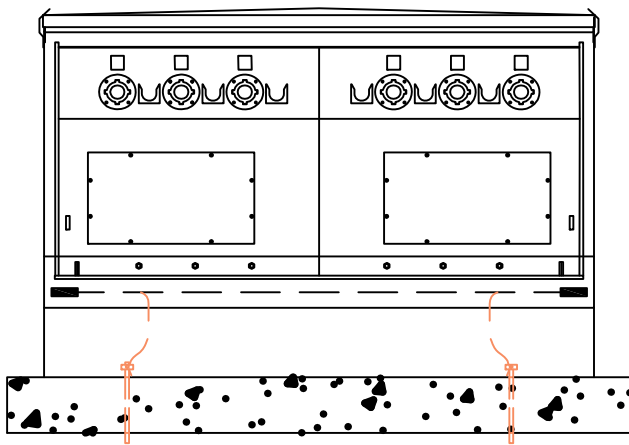


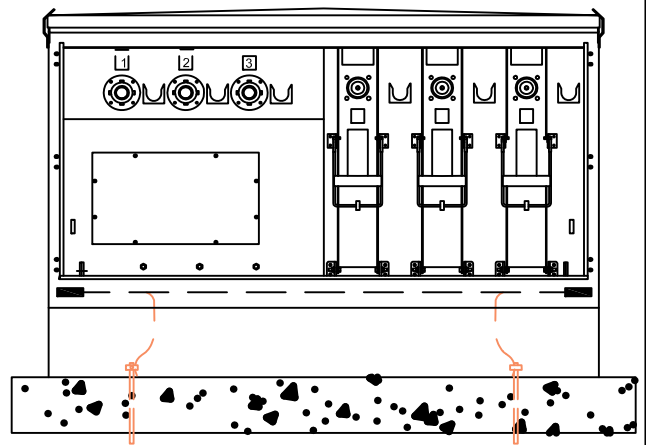
Notes:

1. Bond all concentric neutrals together.
2. Provide sufficient primary neutral pigtail and cable slack to permit ready disconnection of elbow and mounting on parking stand.
3. All switchgears should have a #2 Cu case ground ring. If one side of the switchgear has 1000 MCM wire and the other side 1/0 wire, then a #2 Cu wire independent of the equipment ground should be run between the two sides as a system neutral. If both sides have 1000 MCM wire, then a 4/0 Cu conductor should be run between the two sides as a system neutral.

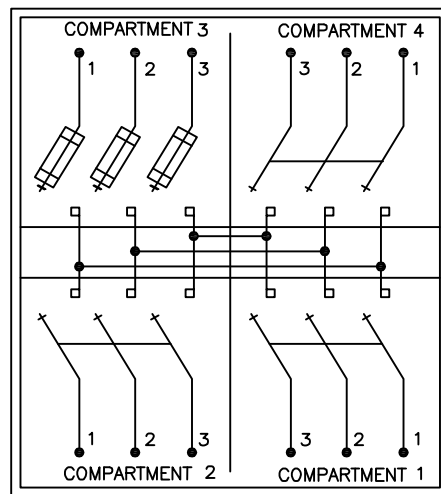
Front View  
Switch Side



Rear View  
Fuse Side



Circuit Configuration



URD CONSTRUCTION  
SPECIFICATIONS

Typical Switchgear Figure 11  
3 Switches and 1 Fuse

|        |          |               |              |
|--------|----------|---------------|--------------|
| drawn: | approved | date:         | 300-002-0713 |
| JBS    | MJB      | July 18, 2013 |              |