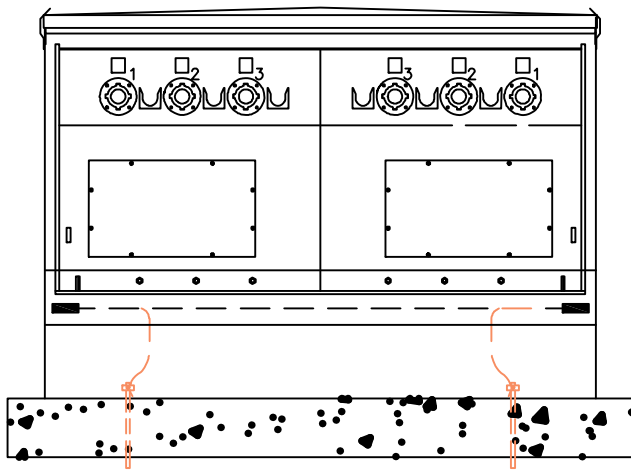


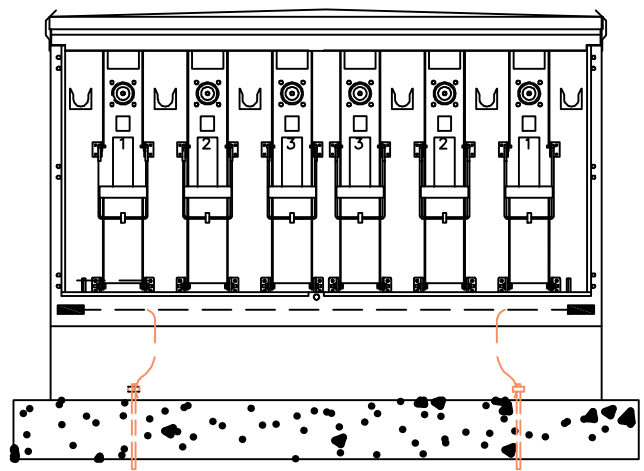
Notes:

1. Bond all concentric neutrals together.
2. Provide sufficient primary neutral pigtail and cable slack to permit ready disconnection of elbow and mounting on parking stand.
3. All switchgears should have a #2 Cu case ground ring. If one side of the switchgear has 1000 MCM wire and the other side 1/0 wire, then a #2 Cu wire independent of the equipment ground should be run between the two sides as a system neutral. If both sides have 1000 MCM wire, then a 4/0 Cu conductor should be run between the two sides as a system neutral.

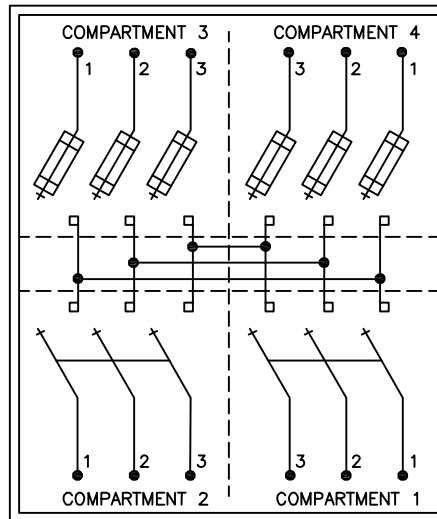
Switch Side (Door Removed)



Fuse Side (Door Removed)



Circuit Configuration



URD CONSTRUCTION SPECIFICATIONS

Typical Switchgear Figure 9 2 Switches and 2 Fuses

drawn:	approved	date:	300-001-0713
JBS	MJB	July 18, 2013	