

\*Increase to 16'-0" min. over roadways.

Note: On transformers heavier than 1500 pounds use unit M7-11.1



PEDERNALES ELECTRIC  
COOPERATIVE, INC.  
CONSTRUCTION ASSEMBLY UNIT

**One Voltage Regulator Pole Mounted with  
Pre-Mounted Arresters**

Page 1 of 2

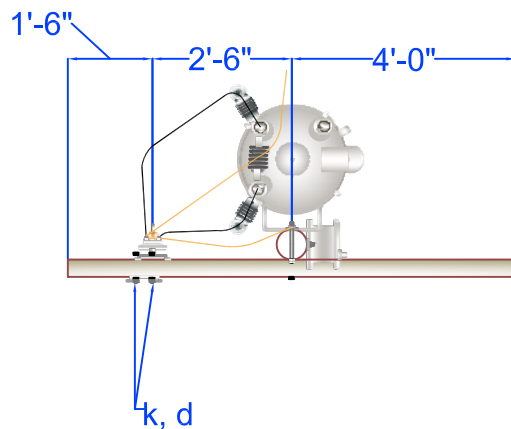
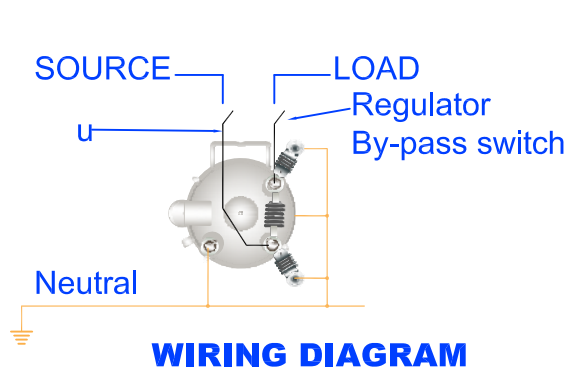
|        |          |               |
|--------|----------|---------------|
| drawn: | approved | date:         |
| REB    | MJB      | July 25, 2014 |

**M7-11**

| Item | Material Number | Item Quantity | Item Description                |
|------|-----------------|---------------|---------------------------------|
| a    | 2000262         | 1             | Clevis Anchor Shackle Sml       |
| b    | 2001328         | 2             | Xarm Fbgls 8'                   |
| c    | 2000551         | 1             | Insulator Susp Poly 38KV CI     |
| d    | *3000148        | 4             | Locknut 1/2" MF                 |
| e    | *3000153        | 2             | Locknut 5/8" MF                 |
| f    | *3000151        | 2             | Locknut 3/4" MF                 |
| g    | 2000945         | 1             | Switch Reg Bypass 25 KV 600A    |
| h    | *3000238        | 2             | Washer Sq F 2 1/2x2 1/2 11/16 H |
| j    | *3000244        | 2             | Washer Sq F 4x1/4 W 13/16H      |
| k    | *2000079        | 4             | Bolt Machine 1/2" x 6"          |
| l    | *               | 4             | Bolt Machine 5/8"               |
| m    | *               | 2             | Bolt Machine 3/4"               |
| n    | *               | As Required   | Connectors                      |
| o    | *               | As Required   | Jumpers                         |
| p    | *2001499        | As Required   | Wire Copper Clad Steel #2 7 Str |

\*Denotes "Grab Bag" item. All bolt lengths are dependent on pole class.

See Covered Jumper Chart in Section One of Construction Specifications.

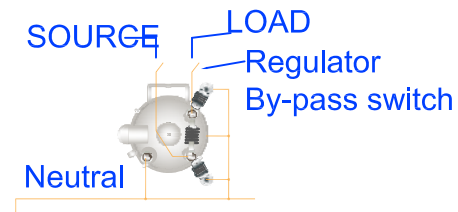


PEDERNALES ELECTRIC  
COOPERATIVE, INC.  
CONSTRUCTION ASSEMBLY UNIT

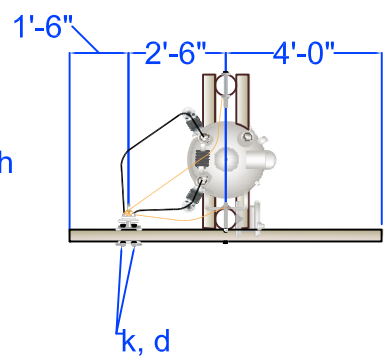
One Voltage Regulator Pole Mounted with  
Pre-Mounted Arresters  
Page 2 of 2

|                      |                        |                        |
|----------------------|------------------------|------------------------|
| drawn:<br><b>REB</b> | approved<br><b>MJB</b> | date:<br>July 25, 2014 |
|----------------------|------------------------|------------------------|

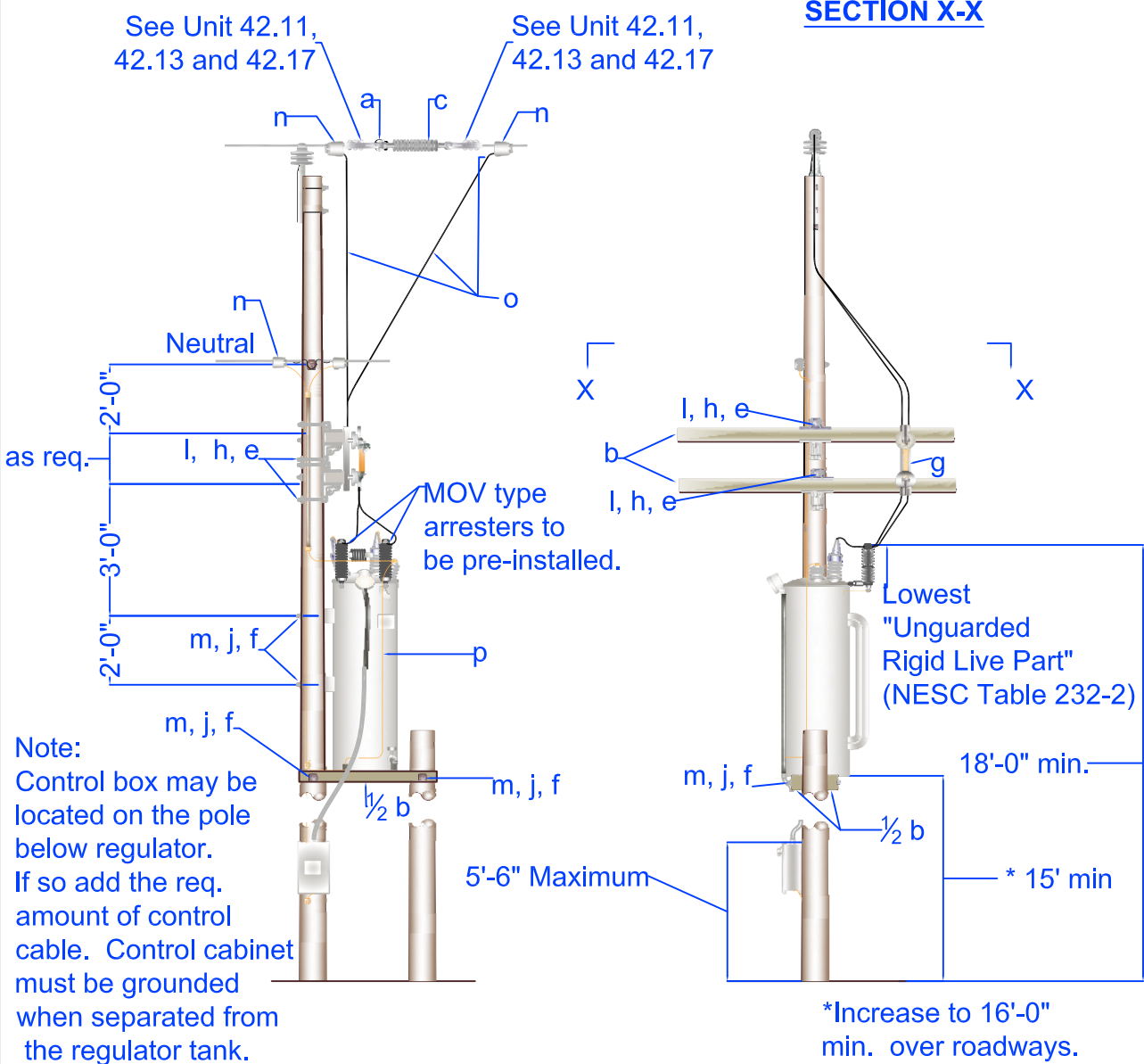
**M7-11**



**WIRING DIAGRAM**



**SECTION X-X**



PEDERNALES ELECTRIC  
COOPERATIVE, INC.  
CONSTRUCTION ASSEMBLY UNIT

**One Voltage Regulator Rack Mounted with Pre-Mounted Arresters.**

Page 1 of 2

|        |          |               |
|--------|----------|---------------|
| drawn: | approved | date:         |
| REB    | MJB      | April 6, 2012 |

**M7-11.1**

| Item | Material Number | Item Quantity | Item Description                |
|------|-----------------|---------------|---------------------------------|
| a    | 2000262         | 1             | Clevis Anchor Shackle Sml       |
| b    | 2001328         | 3             | Xarm Fbgls 8'                   |
| c    | 2000551         | 1             | Insulator Susp Poly 35KV Cl     |
| d    | *3000148        | 2             | Locknut 1/2" M F                |
| e    | *3000153        | 2             | Locknut 5/8" M F                |
| f    | *3000151        | 4             | Locknut 3/4" M F                |
| g    | 2000945         | 1             | Switch Reg Bypass 25KV 600A     |
| h    | *2000238        | 8             | Washer Sq F 2 1/2x2 1/2 11/16H  |
| j    | *3000244        | 6             | Washer Sq F 4x1/4 W 13/16H      |
| k    | *2000079        | 2             | Bolt Machine 1/2" x 6"          |
| l    | *               | 2             | Bolt Machine 5/8"               |
| m    | *               | 4             | Bolt Machine 3/4"               |
| n    | *               | As Required   | Connectors                      |
| o    | *               | As Required   | Jumpers                         |
| p    | *2001499        | As Required   | Wire Copper Clad Steel #2 7 Str |

\*Denotes "Grab Bag" item. All bolt lengths are dependent on pole class.

See Covered Jumper Chart in Section One of Construction Specifications.



PEDERNALES ELECTRIC  
COOPERATIVE, INC.  
CONSTRUCTION ASSEMBLY UNIT

One Voltage Regulator Rack Mounted  
with Pre-Mounted Arresters.  
Page 2 of 2

|        |          |                |
|--------|----------|----------------|
| drawn: | approved | date:          |
| REB    | MJB      | August 1, 2014 |

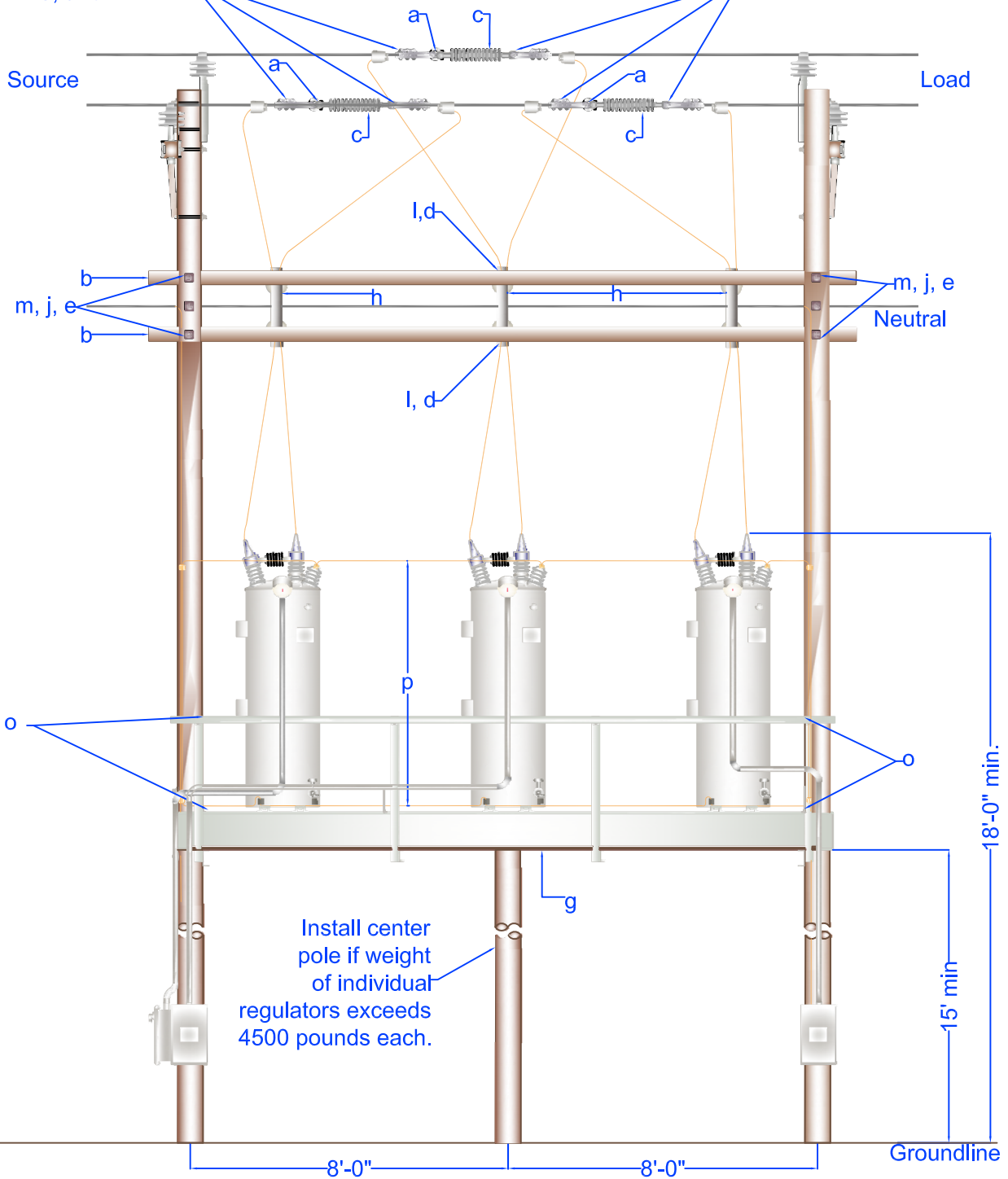
**M7-11.1**

See Units M42-11,  
M42-13, and M42-17

See Units M42-11,  
M42-13, and M42-17

Source

Load



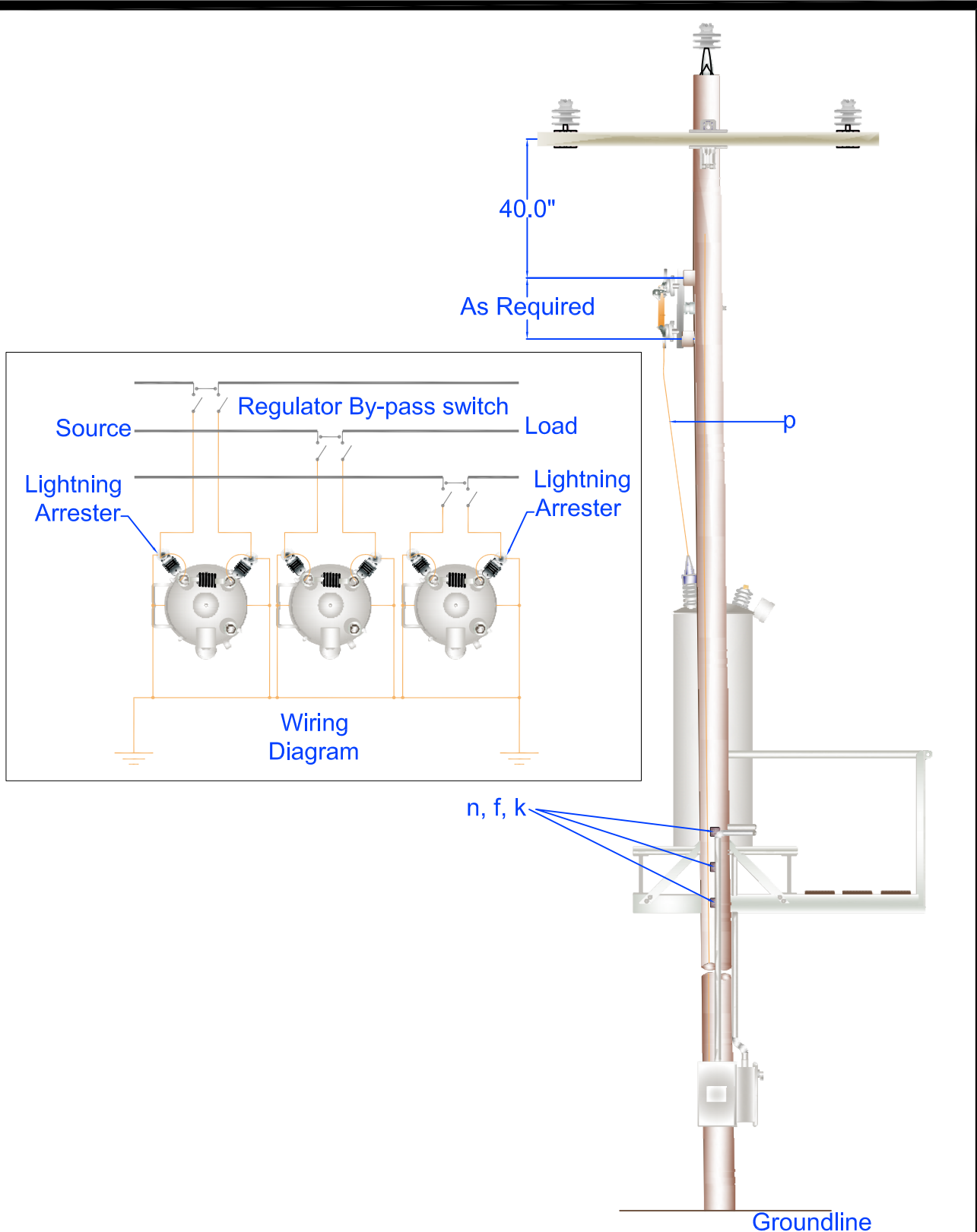
PEDERNALES ELECTRIC  
COOPERATIVE, INC.  
CONSTRUCTION ASSEMBLY UNIT

**Three Voltage Regulators Platform Mounted with  
Pre-Mounted Lightning Arresters**

Page 1 of 3

|                      |                        |                        |
|----------------------|------------------------|------------------------|
| drawn:<br><b>REB</b> | approved<br><b>MJB</b> | date:<br>April 6, 2012 |
|----------------------|------------------------|------------------------|

**M7-13**



PEDERNALES ELECTRIC  
 COOPERATIVE, INC.  
 CONSTRUCTION ASSEMBLY UNIT

**Three Voltage Regulators Platform Mounted with  
 Pre-Mounted Lightning Arresters**

Page 2 of 3

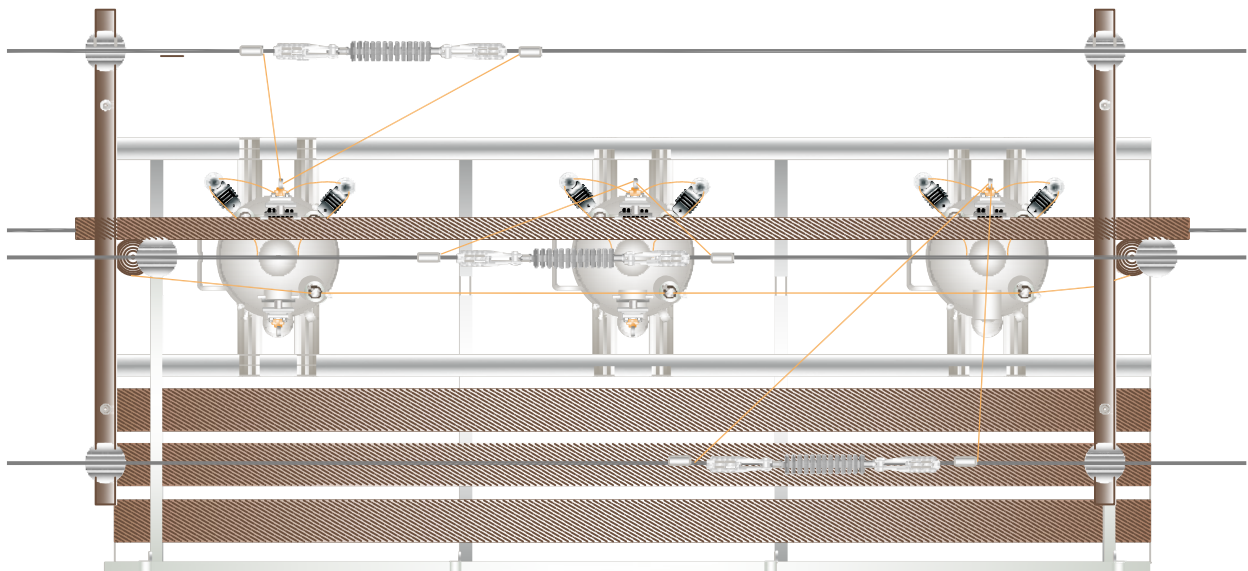
|        |          |               |
|--------|----------|---------------|
| drawn: | approved | date:         |
| REB    | MJB      | April 6, 2012 |

**M7-13**

| Item | Material Number | Item Quantity | Item Description                |
|------|-----------------|---------------|---------------------------------|
| a    | 2000262         | 3             | Clevis Anchor Shackle Sml       |
| b    | 2001306         | 2             | Xarm 5 3/4" x 7 3/4" x 18'      |
| c    | 2000551         | 3             | Insulator Susp Poly 35 KV CI    |
| d    | *3000148        | 12            | Locknut 1/2" M F                |
| e    | *3000153        | 4             | Locknut 5/8" M F                |
| f    | *3000151        | 6             | Locknut 3/4" M F                |
| g    | 3000632         | 1             | Platform Xfmr 16'9"             |
| h    | 2000945         | 3             | Switch Reg Bypass 25KV 600A     |
| j    | *3000238        | 8             | Washer Sq F 2 1/2x 2 1/2 11/16H |
| k    | *3000239        | 6             | Washer Sq 2 1/2x2 1/2 13/16 H   |
| l    | *2000077        | 12            | Bolt Machine 1/2" x 10"         |
| m    | *2000091        | 4             | Bolt Machine 5/8"               |
| n    | *2000083        | 6             | Bolt Machine 3/4"               |
| o    | *3000188        | 4             | Screw Lag 1/2" x 4"             |
| p    | 2001499         | 13 Pounds     | Wire Copper Clad Steel #2 7 Str |

\*Denotes "Grab Bag" item. All bolt lengths are dependent on pole class.

See Covered Jumper Chart in Section One of Construction Specifications.

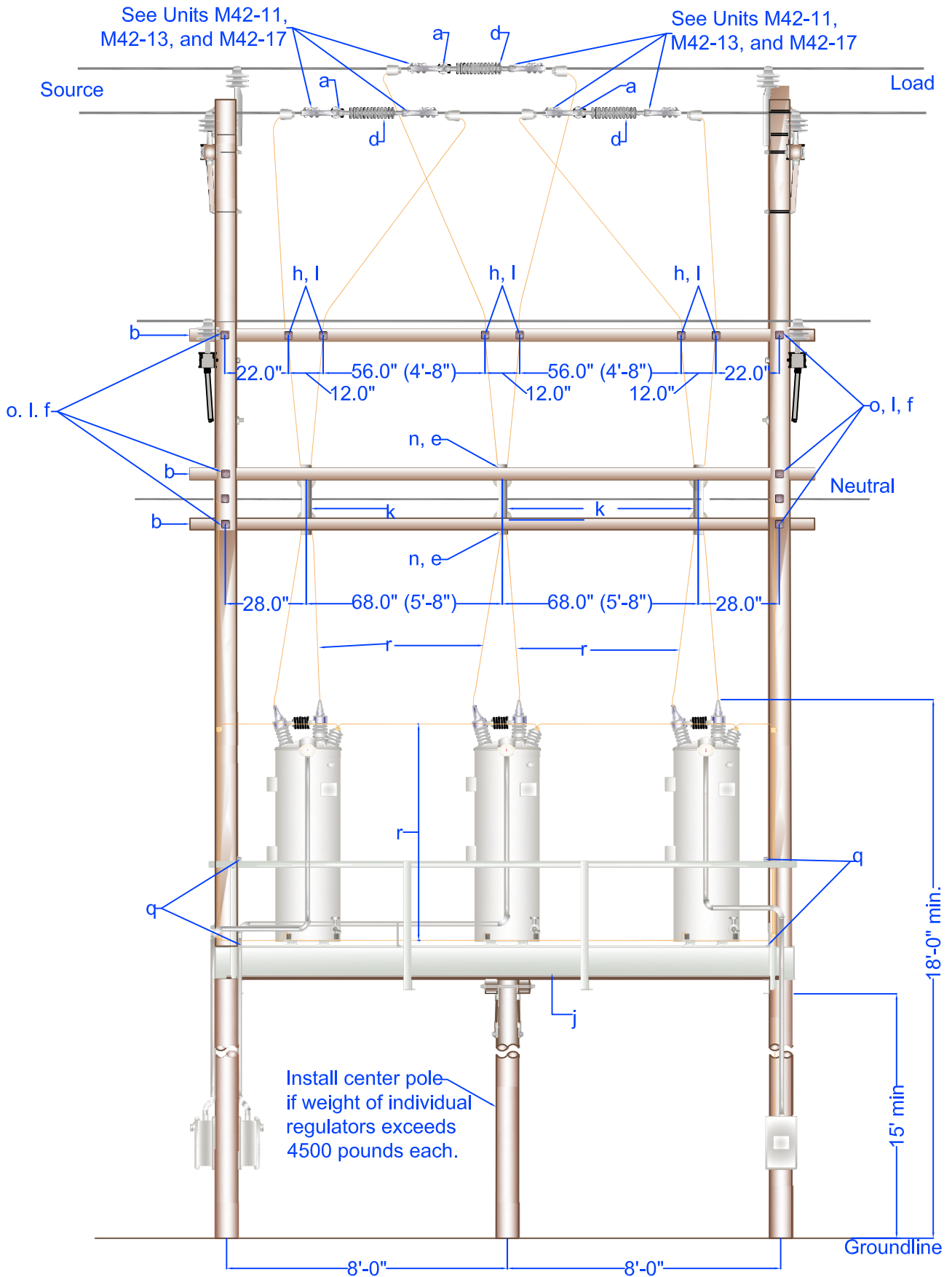


PEDERNALES ELECTRIC  
COOPERATIVE, INC.  
CONSTRUCTION ASSEMBLY UNIT

Three Voltage Regulators Platform Mounted with  
Pre-Mounted Lightning Arresters  
Page 3 of 3

|                      |                        |                        |
|----------------------|------------------------|------------------------|
| drawn:<br><b>REB</b> | approved<br><b>MJB</b> | date:<br>April 6, 2012 |
|----------------------|------------------------|------------------------|

**M7-13**



See Units M42-11,  
M42-13, and M42-17

See Units M42-11,  
M42-13, and M42-17

Source

Load

o. l. f.

Neutral

Groundline

Install center pole  
if weight of individual  
regulators exceeds  
4500 pounds each.

**Three Voltage Regulators Platform Mounted with  
Pre-Mounted Lightning Arresters for Upper  
Circuit of Double Circuit Lines**  
Page 1 of 3

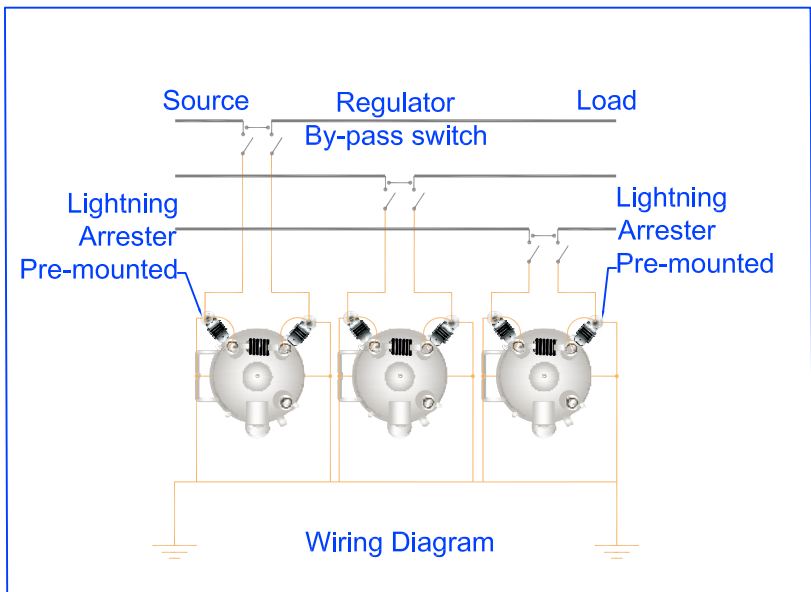
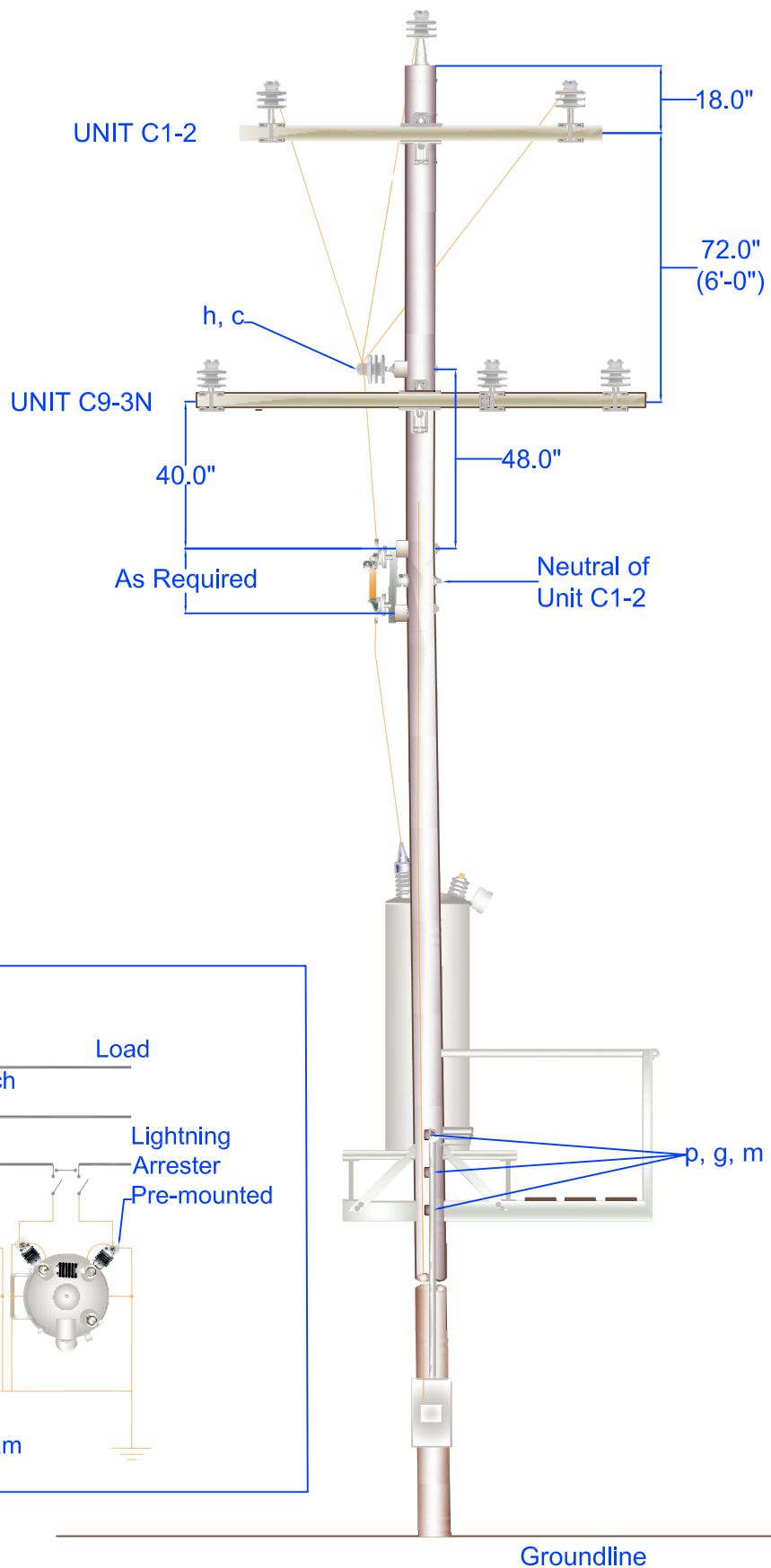


PEDERNALES ELECTRIC  
COOPERATIVE, INC.  
CONSTRUCTION ASSEMBLY UNIT

|                      |                        |                        |
|----------------------|------------------------|------------------------|
| drawn:<br><b>REB</b> | approved<br><b>MJB</b> | date:<br>April 6, 2012 |
|----------------------|------------------------|------------------------|

**M7-14**





Groundline



PEDERNALES ELECTRIC  
COOPERATIVE, INC.  
CONSTRUCTION ASSEMBLY UNIT

Three Voltage Regulators Platform Mounted with  
Pre-Mounted Lightning Arresters for Upper  
Circuit of Double Circuit Lines  
Page 2 of 3

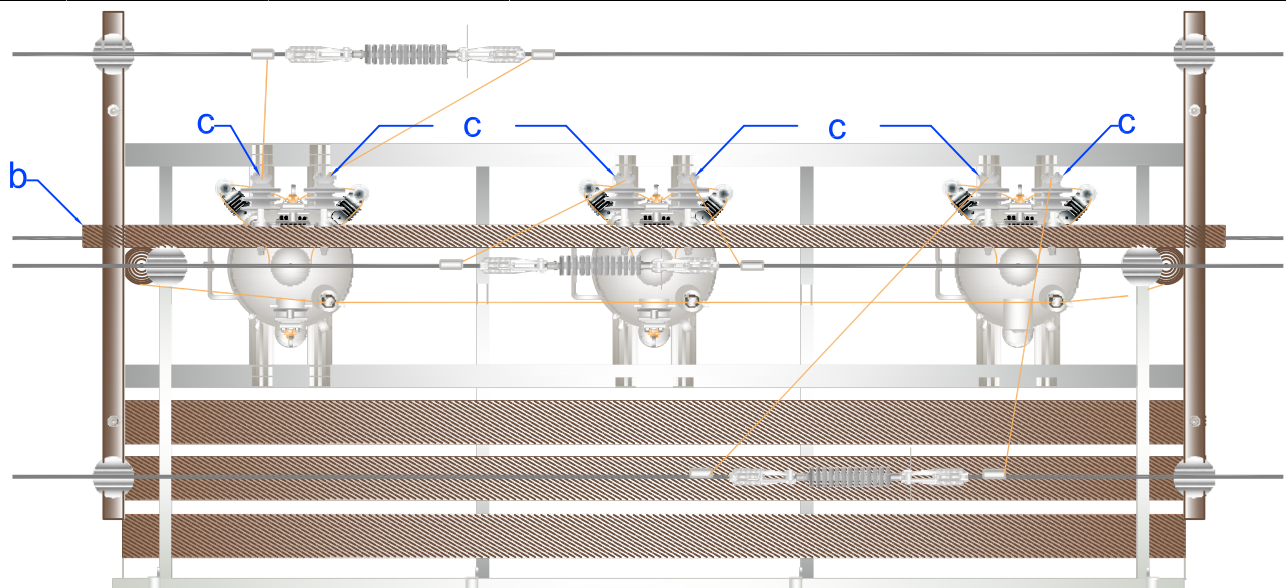
|                      |                        |                        |
|----------------------|------------------------|------------------------|
| drawn:<br><b>REB</b> | approved<br><b>MJB</b> | date:<br>April 6, 2012 |
|----------------------|------------------------|------------------------|

**M7-14**

| Item | Material Number | Item Quantity | Item Description                |
|------|-----------------|---------------|---------------------------------|
| a    | 2000262         | 3             | Clevis Anchor Shackle Sml       |
| b    | 2001306         | 3             | Xarm 5 3/4" x 7 3/4" x 18'      |
| c    | 2000541         | 6             | Insulator Pin type CI 55-7      |
| d    | 2000551         | 3             | Insulator Susp Poly 35KV CI     |
| e    | *3000148        | 12            | Locknut 1/2" M F                |
| f    | *3000153        | 6             | Locknut 5/8" M F                |
| g    | *3000151        | 6             | Locknut 3/4" M F                |
| h    | 2000626         | 6             | Pin Xarm 1 3/8" Thd Reg         |
| j    | 2000632         | 1             | Platform Xfmr 16'9"             |
| k    | 2000945         | 3             | Switch Reg Bypass 25KV 600A     |
| l    | *3000238        | 12            | Washer Sq F 2 1/2x2 1/2 11/16H  |
| m    | *3000329        | 6             | Washer Sq F 2 1/2x2 1/2 13/16H  |
| n    | *               | 12            | Bolt Machine 1/2"               |
| o    | *               | 6             | Bolt Machine 5/8"               |
| p    | *               | 6             | Bolt Machine 3/4"               |
| q    | *3000188        | 4             | Screw Lag 1/2" x 4"             |
| r    | *2001499        | As Required   | Wire Copper Clad Steel #2 7 Str |

\*Denotes "Grab Bag" item. All bolt lengths are dependent on pole class.

See Covered Jumper Chart in Secion One of Construction Specifications.

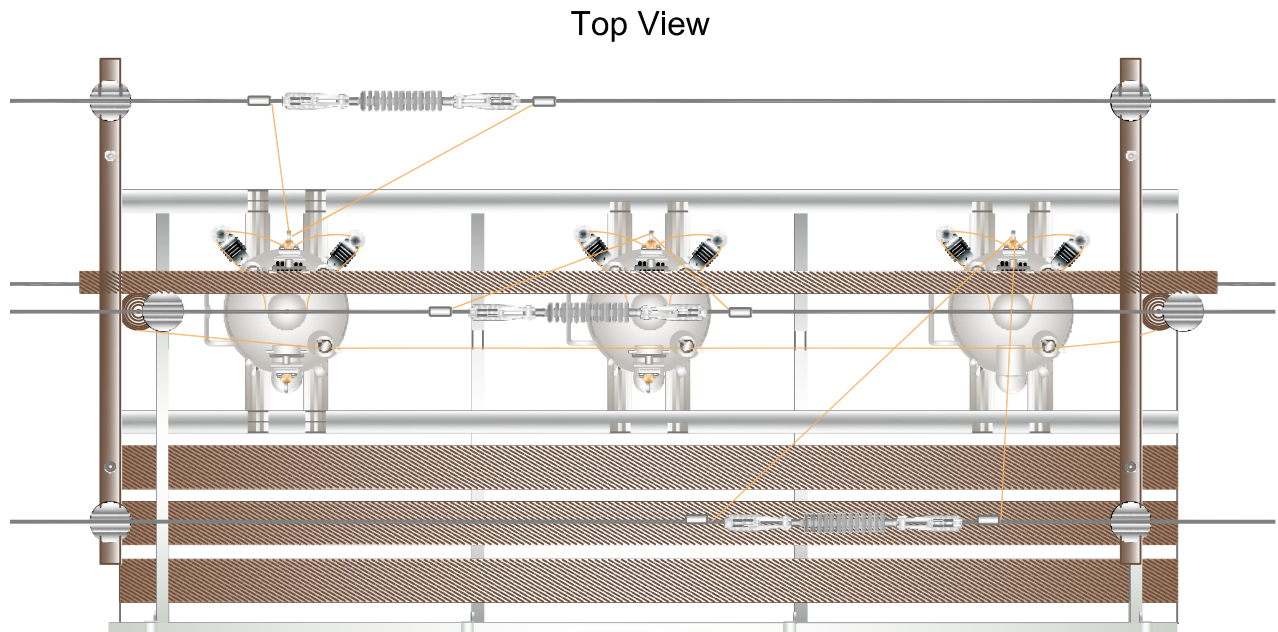
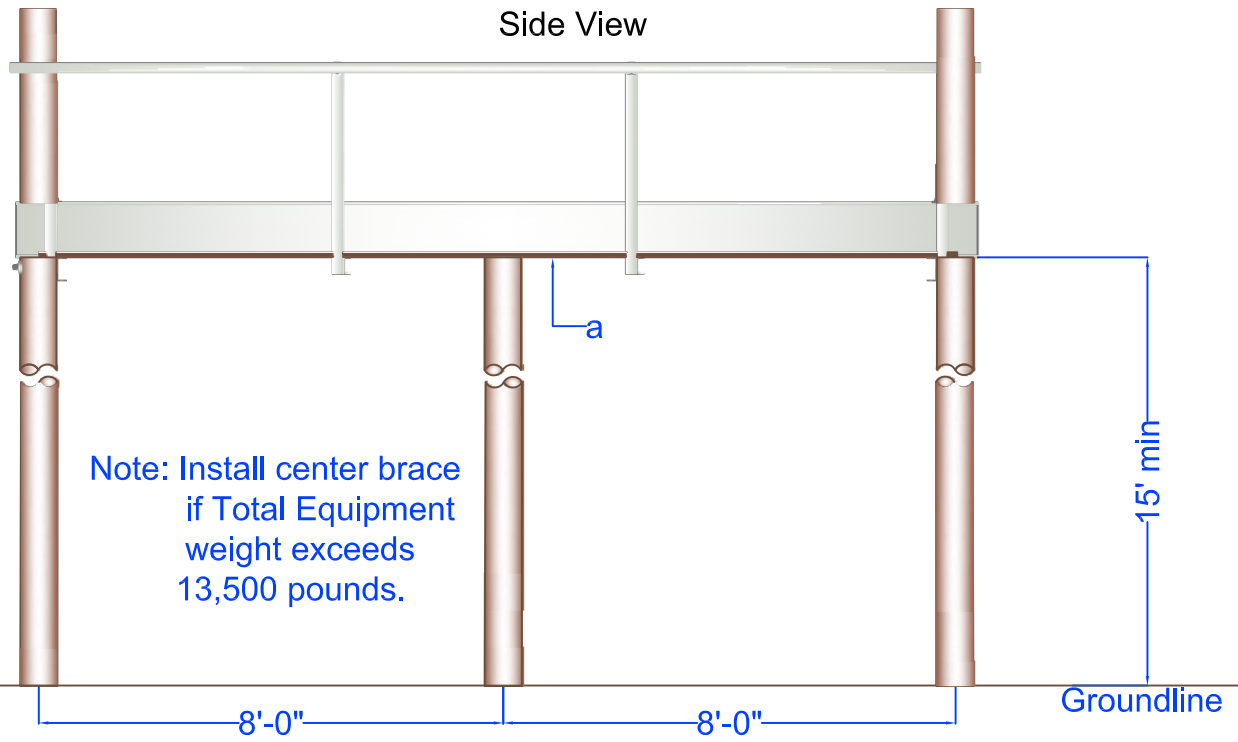


PEDERNALES ELECTRIC  
COOPERATIVE, INC.  
CONSTRUCTION ASSEMBLY UNIT

Three Voltage Regulators Platform Mounted with  
Pre-Mounted Lightning Arresters for Upper  
Circuit of Double Circuit Lines  
Page 3 of 3

|        |          |               |
|--------|----------|---------------|
| drawn: | approved | date:         |
| REB    | MJB      | April 6, 2012 |

**M7-14**



| Item | Material Number | Item Quantity | Item Description    |
|------|-----------------|---------------|---------------------|
| a    | 2000632         | 1             | Platform Xfmr 16'9" |

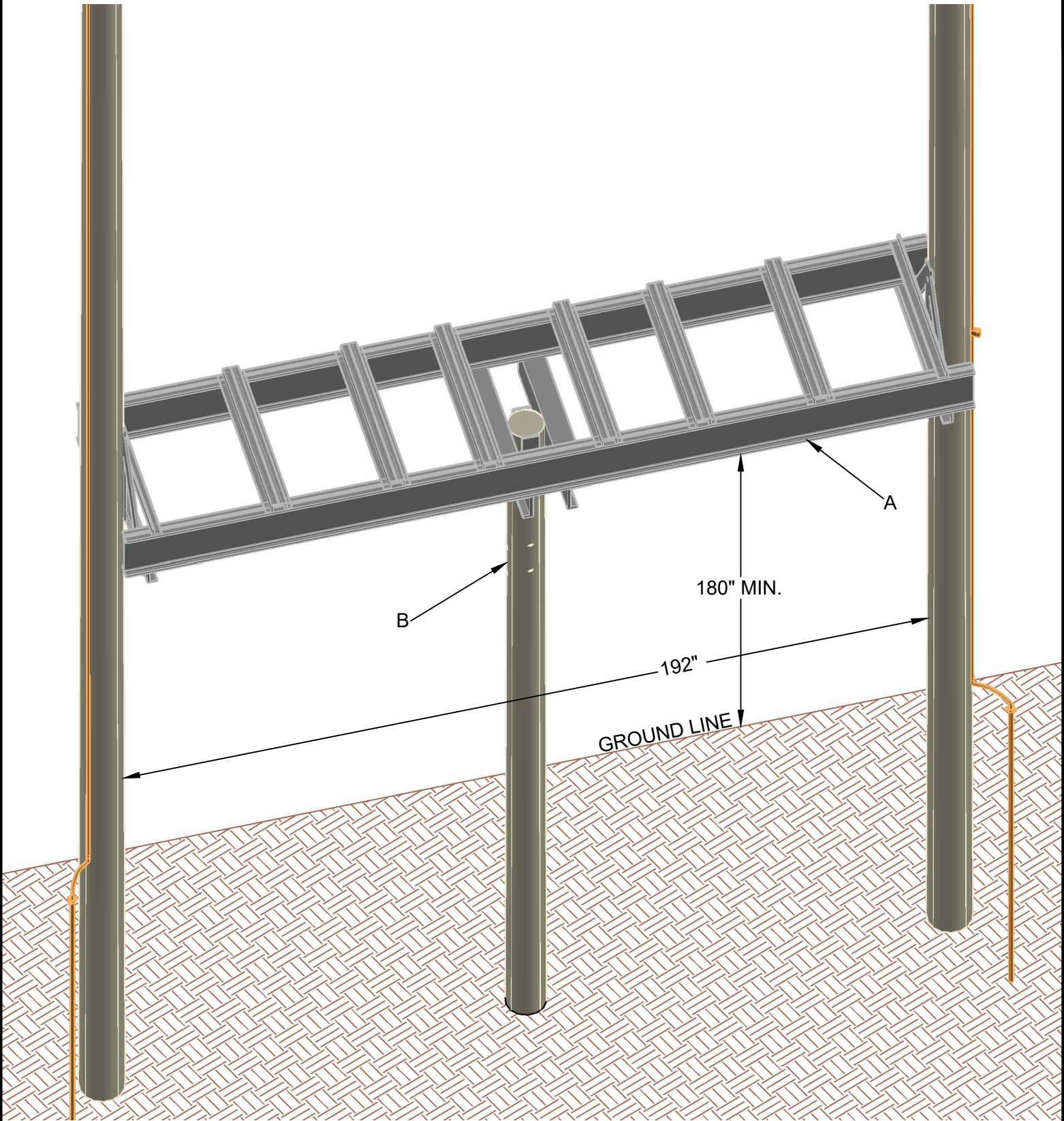


PEDERNALES ELECTRIC  
COOPERATIVE, INC.  
CONSTRUCTION ASSEMBLY UNIT

### Regulator or Transformer Rack

|                      |                        |                         |
|----------------------|------------------------|-------------------------|
| drawn:<br><b>REB</b> | approved<br><b>MJB</b> | date:<br>April 20, 2012 |
|----------------------|------------------------|-------------------------|

# M7-20



| ITEM | MATERIAL NUMBER | DESCRIPTION               | QUANTITY |
|------|-----------------|---------------------------|----------|
| A    | 2002887         | EXTRA-HEAVY-DUTY PLATFORM | 1        |
| B    | 2002713         | BRACE PLATFORM REGULATOR  | 1        |

REV A DATE 02/19/2021 REVISION ISSUE FOR CONSTRUCTION BY RWC CHK SSS APR MMG



CONSTRUCTION  
ASSEMBLY UNIT

EXTRA-HEAVY-DUTY  
REGULATOR OR TRANSFORMER RACK

|               |                  |                     |         |
|---------------|------------------|---------------------|---------|
| drawn:<br>RWC | approved:<br>MMG | date:<br>02/19/2021 | M7-20HD |
|---------------|------------------|---------------------|---------|



| Item | Material Number | Item Quantity | Item Description             |
|------|-----------------|---------------|------------------------------|
| a    | 2000945         | 1             | Switch Reg Bypass 25 KV 600A |



PEDERNALES ELECTRIC  
COOPERATIVE, INC.  
CONSTRUCTION ASSEMBLY UNIT

### Regulator Bypass Switch

|                      |                        |                        |
|----------------------|------------------------|------------------------|
| drawn:<br><b>JBS</b> | approved<br><b>MJB</b> | date:<br>July 30, 2012 |
|----------------------|------------------------|------------------------|

**M7-30**