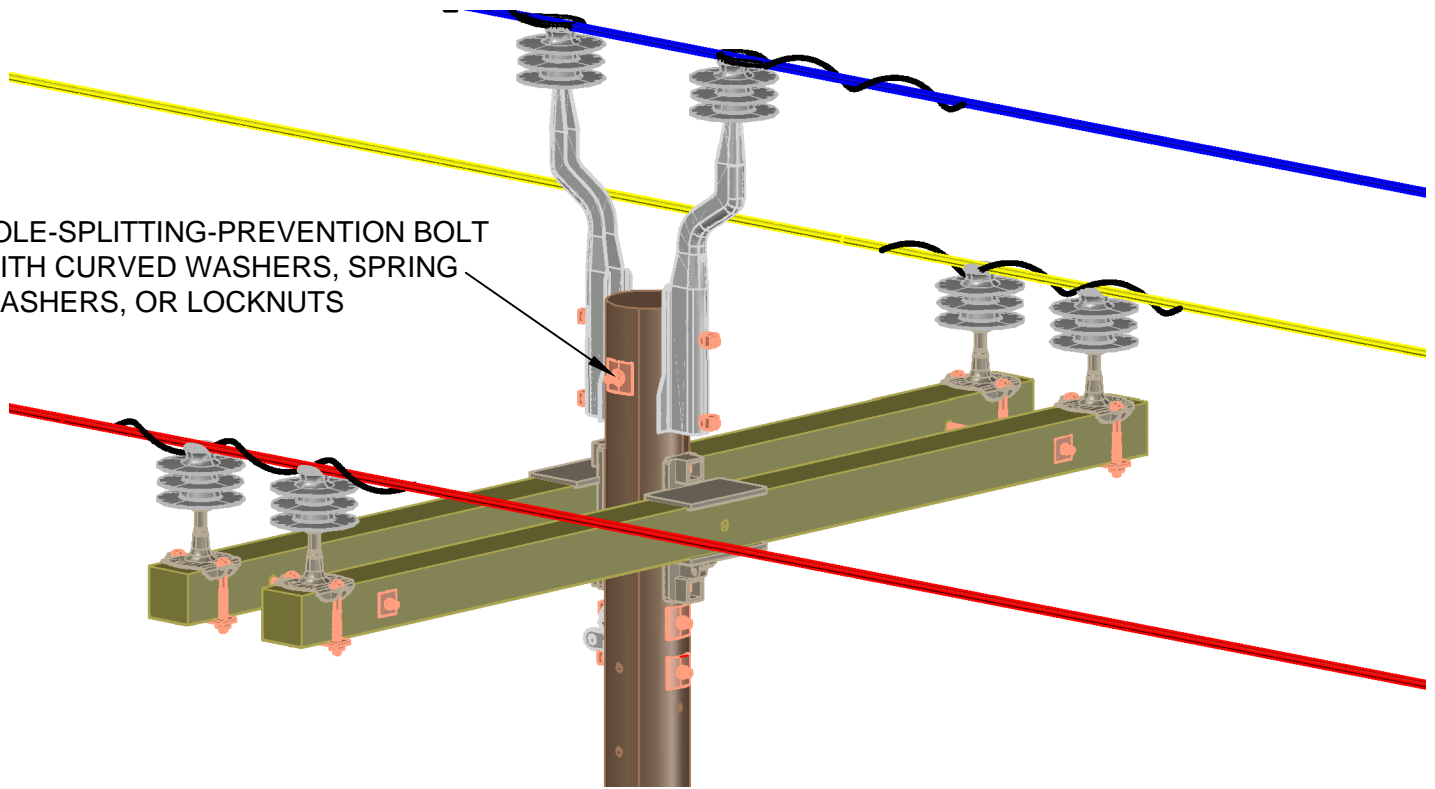
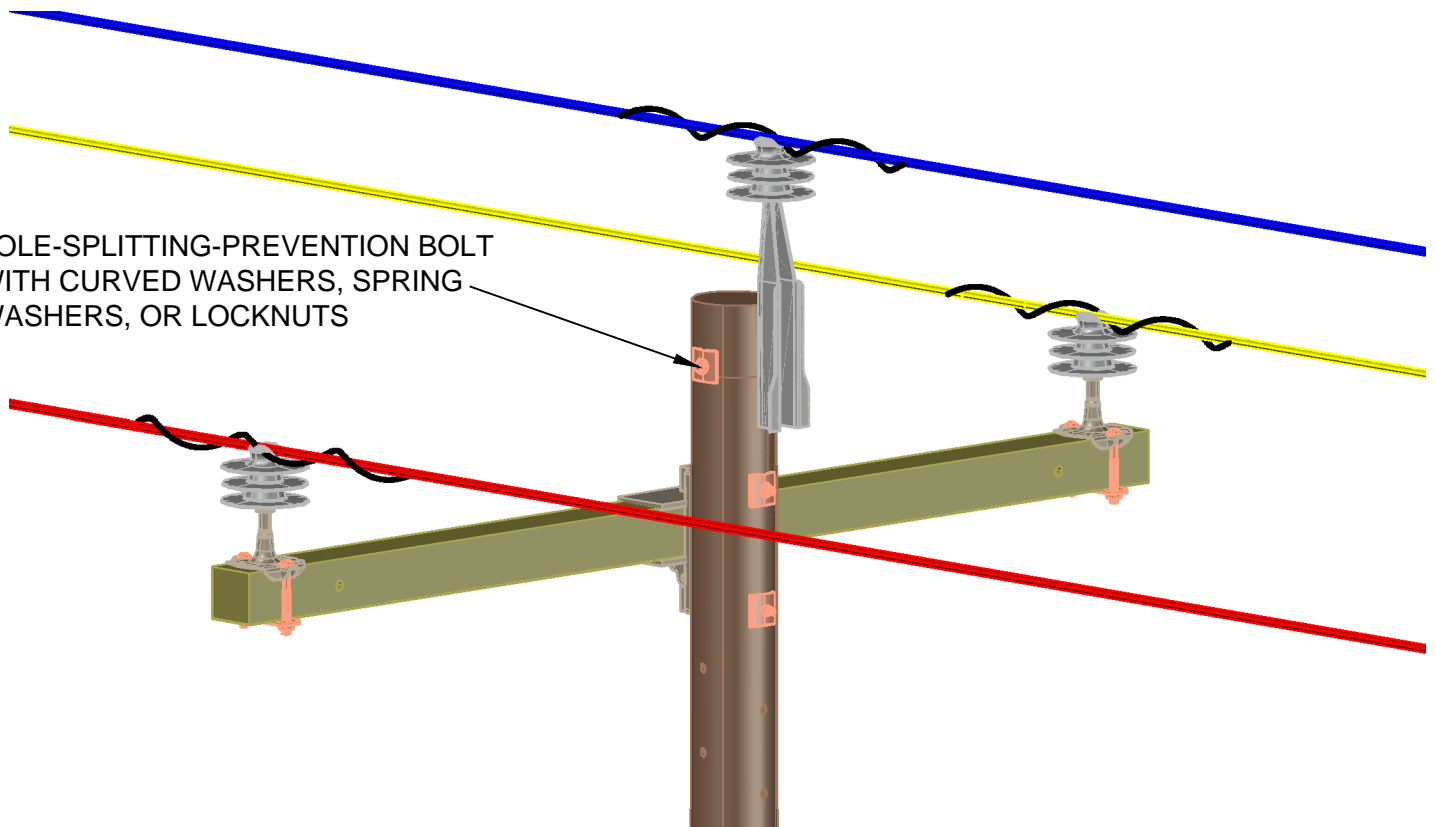


POLE-SPLITTING-PREVENTION BOLT WITH CURVED WASHERS, SPRING WASHERS, OR LOCKNUTS



POLE-SPLITTING-PREVENTION BOLT WITH CURVED WASHERS, SPRING WASHERS, OR LOCKNUTS



IN ACCORDANCE WITH THE STANDARDS COMMITTEE DECISION MADE AT THE AUGUST 8, 2019, QUARTERLY MEETING, A POLE-SPLITTING-PREVENTION BOLT SHALL BE INSTALLED 6" FROM THE TOP OF THE POLE ON ALL CONSTRUCTION WOOD POLE ASSEMBLIES. BOLT LENGTHS WILL BE DEPENDENT ON POLE CLASS.

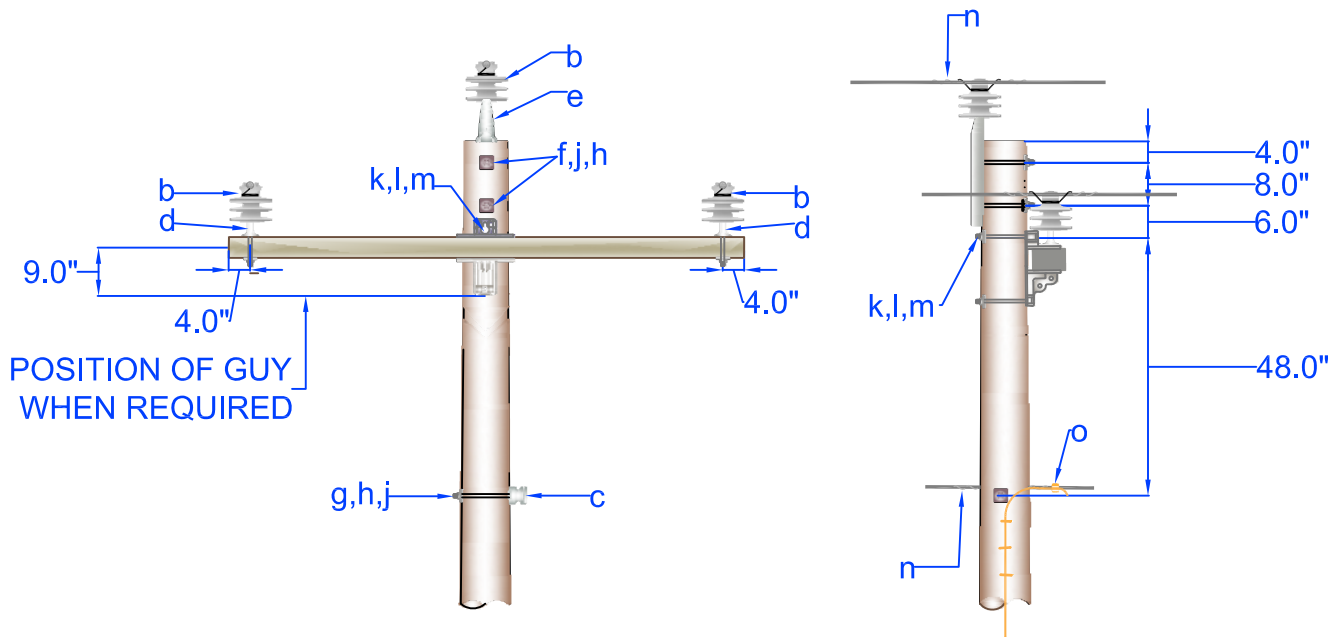
REV | B | DATE | 12/13/2022 | REVISION | OR LOCKNUTS WAS AND LOCKNUTS, REMOVED QUOTES | BY | RWC | CHK | SSS | APR | MMG



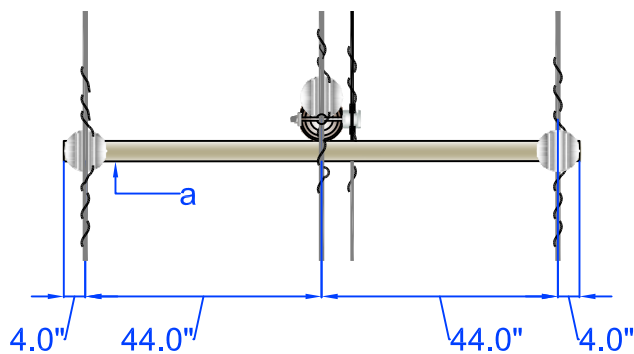
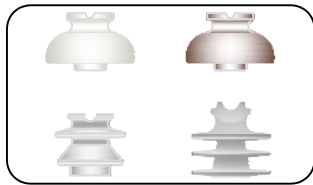
CONSTRUCTION
ASSEMBLY UNIT

SPLIT-PREVENTION BOLTS FOR WOOD POLES

drawn:	approved:	date:	SPLIT PREVENTION
RWC	MMG	12/13/2022	



Possible varieties of Primary Insulators (Stock #2000541)



Note: See design guidelines for additional information

Item	Material Number	Item Quantity	Item Description	Item	Material Number	Item Quantity	Item Description
a	2001328	1	Xarm Fbgl 8'	h	*3000153	3 (2)	Locknut 5/8" M F
b	2000541	3	Insulator Pin Type C1 55-7	j	* 3000240	3 (2)	Washer Sq F 2 1/4
c	2000544	1 (0)	Insulator Spool C1 53-2	k	*	2	Bolt Machine 3/4"
d	2000626	2	Pin Xarm 1 3/8" Thd Reg	l	*3000230	2	Washer SQ F 2 1/2X2 1/2 13/16H
e	2000621	1	Pin Pole Top 20" - 1 3/8" Thd	m	*3000151	2	Locknut 3/4" M F
f	*	2	Bolt Machine 5/8"	n	*	As required	Primary and Neutral Ties
g	*	1 (0)	Bolt Upset Sgl 5/8"	o	*	As required	Connectors

Specify C1N for C1 less the neutral material. Quantities in parenthesis are for C1N. * Denotes "Grab Bag" item. Bolt lengths are dependent on pole class

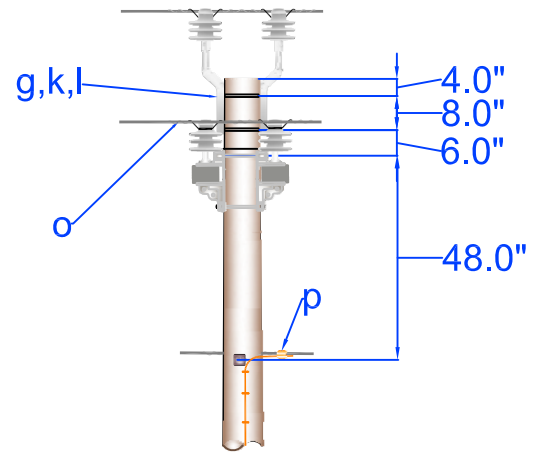
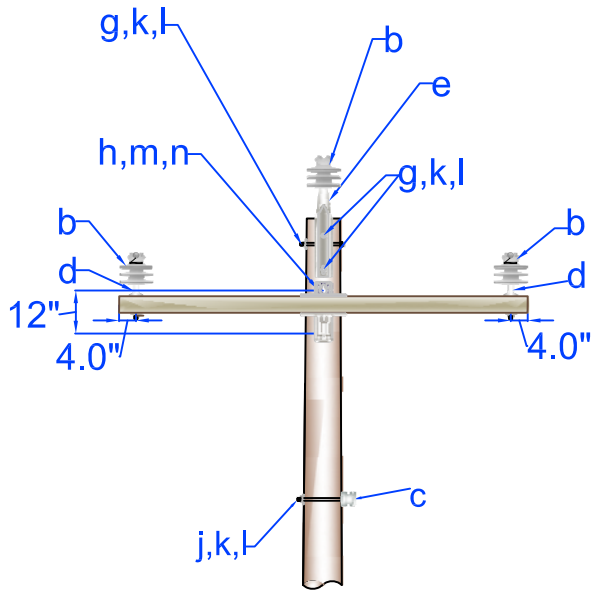


PEDERNALES ELECTRIC
COOPERATIVE, INC.
CONSTRUCTION ASSEMBLY UNIT

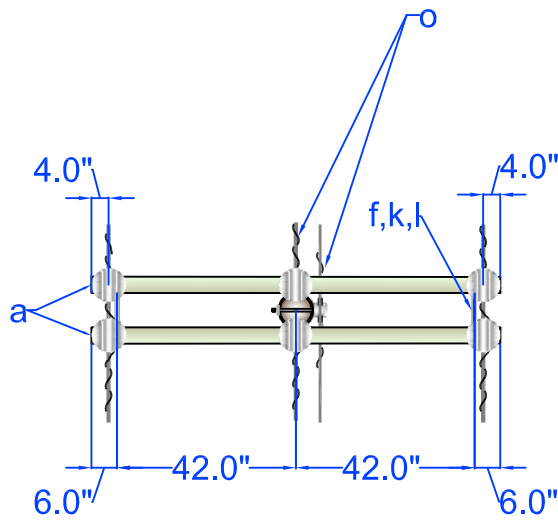
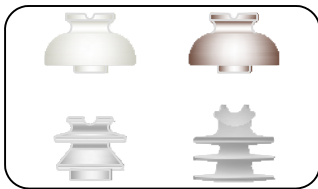
**3Φ Crossarm Construction,
Single Support**

drawn: REB	approved MJB	date: October 20, 2015
----------------------	------------------------	---------------------------

C1/C1N



Possible varieties of Primary Insulators (Stock #2000541)



Note: See design guidelines for additional information

Item	Material Number	Item Quantity	Item Description	Item	Material Number	Item Quantity	Item Description
a	2001328	2	Xarm Fbgls 8"	j	*	1 (0)	Bolt Upset Sgl 5/8"
b	2000541	6	Insulator Pin Type CI 55-7	k	*3000153	14 (13)	Locknut 5/8" M F
c	2000544	1 (0)	Insulator Spool CI 53-2	l	*3000240	11(10)	Washer Sq F 2 1/4
d	2000626	4	Pin Xarm 1 3/8" Thd Reg	m	*3000151	4	Locknut 3/4" M F
e	2000624	2	Pin Pole Top Offset 20"-1 3/8"	n	*3000230	4	Washer SQ F 21/2x21/2 13/16H
f	*	2	Bolt Dbl Arming 5/8"	o	*	As required	Primary and Neutral Ties
g	*	3	Bolt Machine 5/8"	p	*	As required	Connector
h	*	2	Bolt Dbl Arming 3/4"				

Specify C1-1N for C1-1 less neutral material. Quantities in parenthesis are for C1-1N.

* Denotes "Grab Bag" item. Bolt lengths are dependent on pole class.

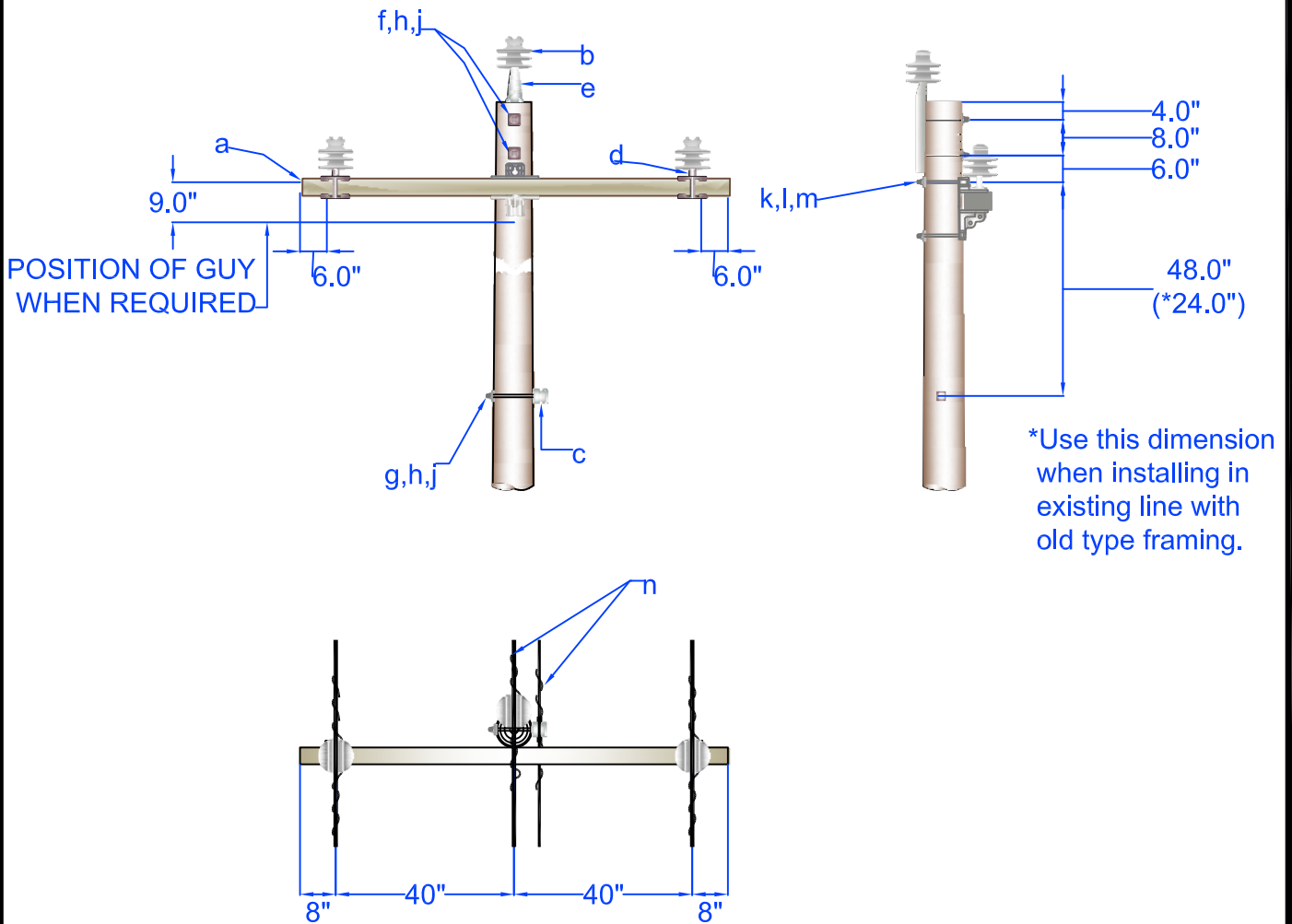


PEDERNALES ELECTRIC
COOPERATIVE, INC.
CONSTRUCTION ASSEMBLY UNIT

3Φ Crossarm Construction Tangent Double Support

drawn:	approved	date:
REB	MJB	October 20, 2015

C1-1/C1-1N



Note: See design guidelines for additional information

Item	Material Number	Item Quantity	Item Description	Item	Material Number	Item Quantity	Item Description
a	2001328	1	Xarm Fbgl 8'	h	*3000153	3 (2)	Locknut 5/8" M F
b	2000541	3	Insulator Pin Type CI 55-7	j	* 3000240	3(2)	Washer Sq F 2 1/4
c	2000544	1 (0)	Insulator Spool CI 53-2	k	*	2	Bolt Machine 3/4"
d	2000625	2	Pin Xarm 1 3/8" Thd Clamp Type	l	*3000230	2	Washer SQ F 21/2x21/2 13/16H
e	2000621	1	Pin Pole Top 20"- 1 3/8" Thd	m	*3000151	2	Locknut 3/4" M F
f	*	2	Bolt Machine 5/8"	n	*	As required	Primary and Neutral Ties
g	*	1 (0)	Bolt Upset Sgl 3/4"				

Specify C1-2N for C1-2 less the neutral material. Quantities in parenthesis are for C1-2N.

* Denotes "Grab Bag" item. Bolt lengths are dependent on pole class.

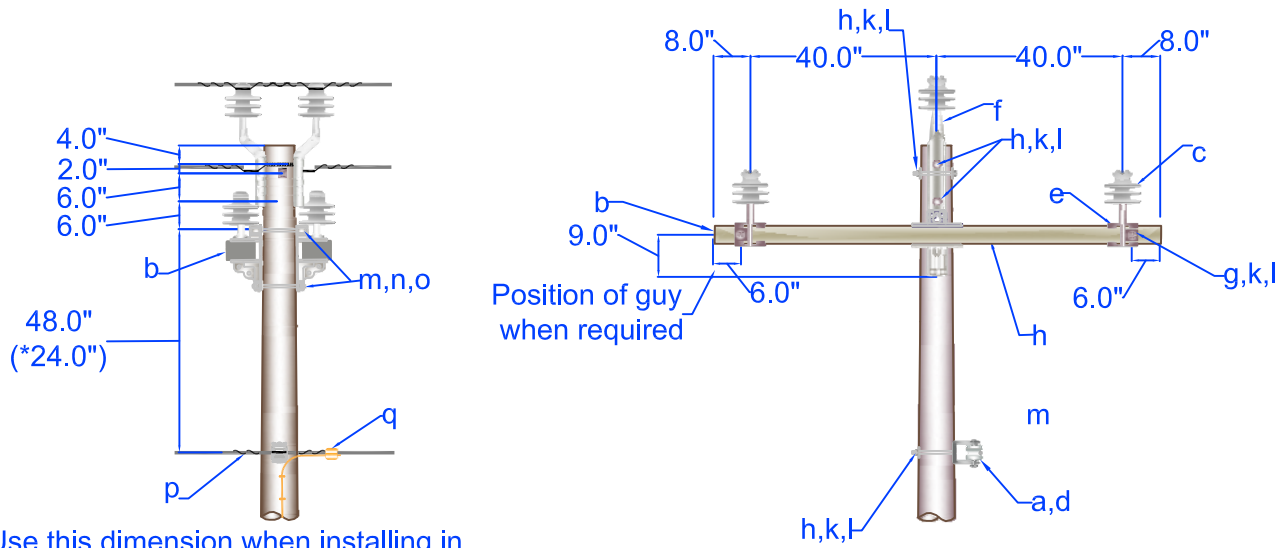


PEDERNALES ELECTRIC
COOPERATIVE, INC.
CONSTRUCTION ASSEMBLY UNIT

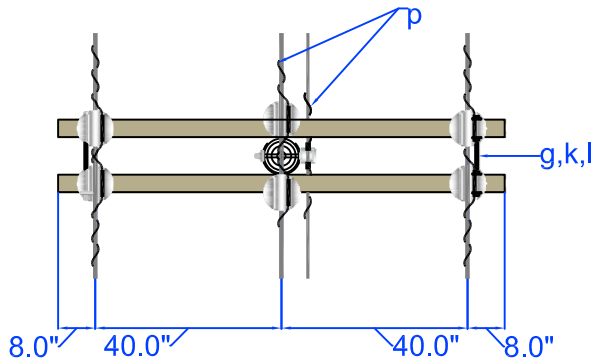
**3Φ Crossarm Construction, Single
Support Using Saddle Pins**

drawn:	approved	date:
REB	MJB	October 20, 2015

C1-2/C1-2N



*Use this dimension when installing in existing line with old type framing.



Note: See design guidelines for additional information

Item	Material Number	Item Quantity	Item Description	Item	Material Number	Item Quantity	Item Description
a	2000148	1 (0)	Bracket DA Clevis	k	*3000153	14 (13)	Locknut 5/8" M F
b	2001328	2	Xarm Fbgls 8'	l	*3000240	10(9)	Washer Sq F 2 1/4
c	2000541	6	Insulator Pin Type CI 55-7	m	*	2	Bolt Dbl Arming 3/4"
d	2000544	1 (0)	Insulator Spool CI 53-2	n	*3000230	4	Washer SQ F 21/2x21/2 13/16H
e	2000625	4	Pin Xarm 1 3/8" Thd Clamp Type	o	*3000151	4	Locknut 3/4" M F
f	2000624	2	Pin Pole Top Offset 20"-1 3/8"	p	*	As Required	Primary and Neutral Ties
g	*	2	Bolt Dbl Arming 5/8"	q	*	As Required	Connector
h	*	4 (3)	Bolt Machine 5/8"				
Specify C1-3N for C1-3 less the neutral material. Quantities in parenthesis are for C1-3N.							

* Denotes "Grab Bag" item. Bolt lengths are dependent on pole class.

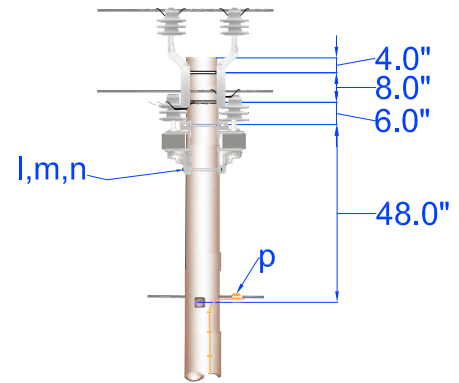
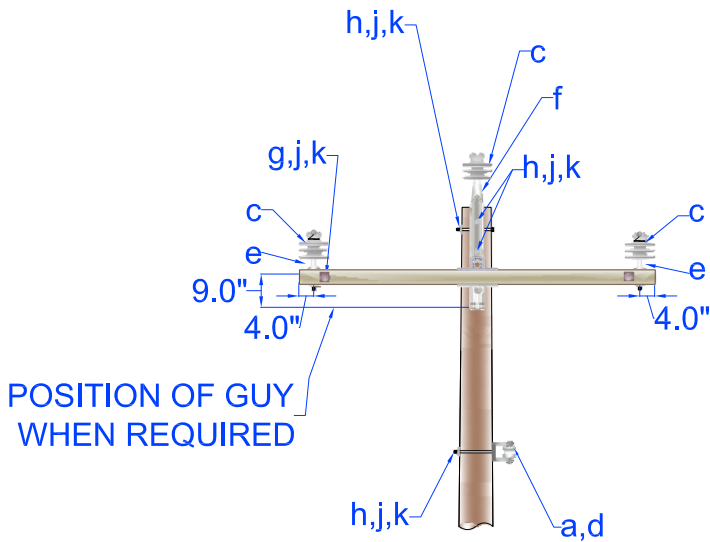


PEDERNALES ELECTRIC
COOPERATIVE, INC.
CONSTRUCTION ASSEMBLY UNIT

3Φ Crossarm Construction, Double
Support Using Saddle Pins

drawn:	approved	date:
REB	MJB	October 21, 2015

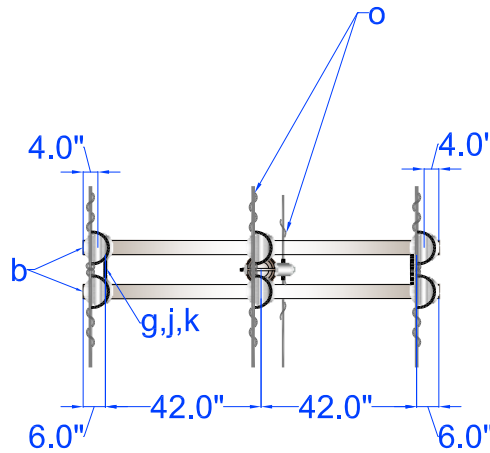
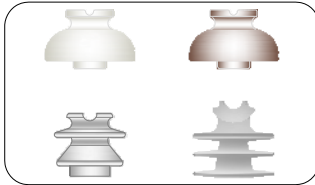
C1-3/C1-3N



Alternate Pin Types



Possible varieties of Primary Insulators (Stock #2000541)



Note: See design guidelines for additional information

Item	Material Number	Item Quantity	Item Description	Item	Material Number	Item Quantity	Item Description
a	2000148	1 (0)	Bracket DA Clevis	j	*3000153	12(11)	Locknut 5/8" M F
b	2001328	2	Xarm Fbgl 8'	k	* 3000240	11(10)	Washer Sq F 2 1/4
c	2000541	6	Insulator Pin Type CI 55-7	l	*	2	Bolt Dbl Arming 3/4"
d	2000544	1 (0)	Insulator Spool CI 53-2	m	*3000151	4	Locknut 3/4" M F
e	2000626	4	Pin Xarm 1 3/8" Thd Reg	n	*3000230	4	Washer SQ F 21/2x21/2 13/16H
f	2000624	2	Pin Pole Top Offset 20"-1 3/8"	o	*	As Required	Primary and Neutral Ties
g	*	2	Bolt Dbl Arming 5/8"	p	*	As Required	Connector
h	*	4(3)	Bolt Machine 5/8"				

Specify C2N for C2 less the neutral material. Quantities in parenthesis are for C2N.

* Denotes "Grab Bag" item. Bolt lengths are dependent on pole class.

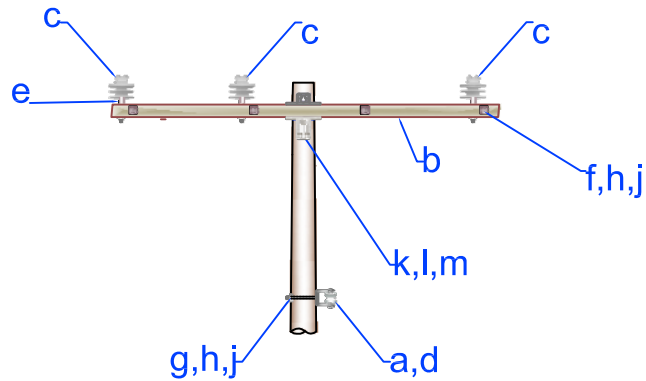
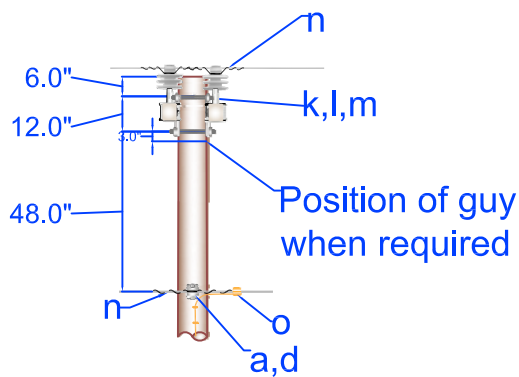


PEDERNALES ELECTRIC
COOPERATIVE, INC.
CONSTRUCTION ASSEMBLY UNIT

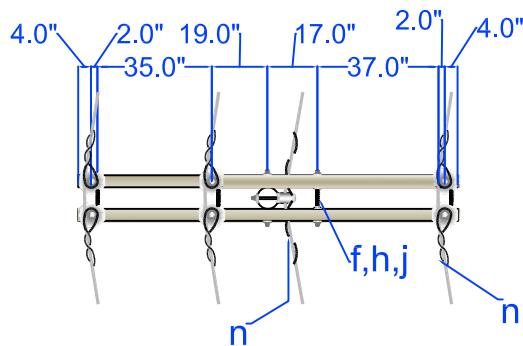
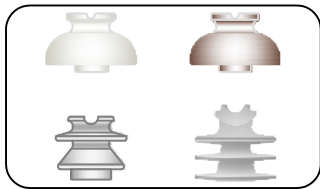
**3Φ 8 ft Crossarm Construction
Double Support Small Angle**

drawn:	approved	date:
REB	MJB	October 21, 2015

C2/C2N



Possible varieties of Primary Insulators (Stock #2000541)



Note:

Center phase wire or neutral wire may be located on the opposite side of the pole where necessary to avoid crossing of wires in midspan.

Item	Material Number	Item Quantity	Item Description	Item	Material Number	Item Quantity	Item Description
a	2000148	1 (0)	Bracket DA Clevis	h	*3000153	17(16)	Locknut 5/8" M F
b	2001324	2	Xarm Fbgls 10'	j	* 3000240	17(16)	Washer Sq F 2 1/4
c	2000541	6	Insulator Pin Type CI 55-7	k	*	2	Bolt Dbl Arming 3/4"
d	2000544	1 (0)	Insulator Spool CI 53-2	l	*3000151	4	Locknut 3/4" M F
e	2000626	6	Pin Xarm 1 3/8" Thd Reg	m	*3000230	4	Washer SQ F 21/2x21/2 13/16H
f	*	4	Bolt Dbl Arming 5/8"	n	*	As Required	Primary and Neutral Ties
g	*	1(0)	Bolt Machine 5/8"	o	*	As Required	Connector

Specify C2-1N for C2-1 less the neutral material. Quantities in parenthesis are for C2-1N.

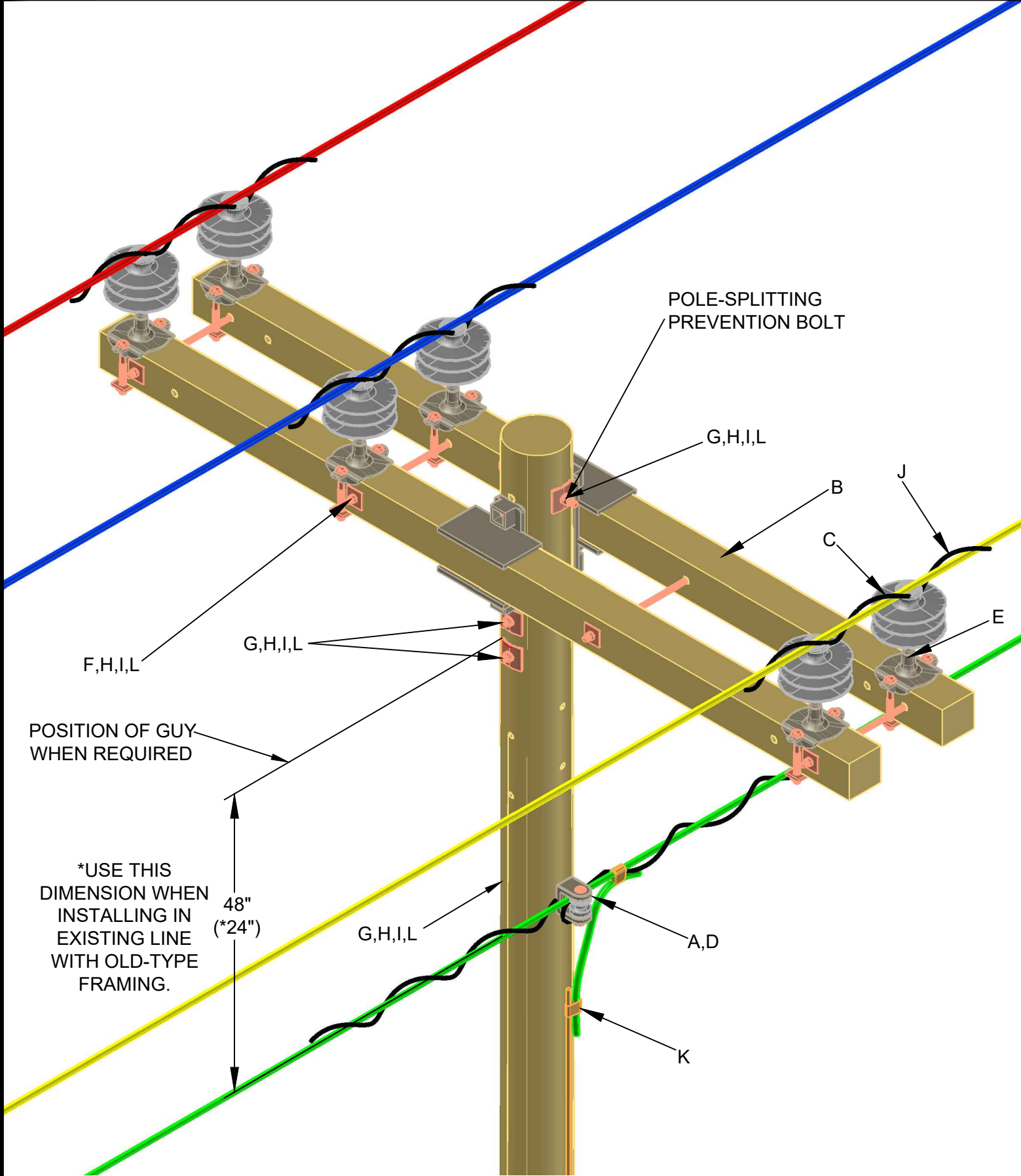
* Denotes "Grab Bag" item. Bolt lengths are dependent on pole class.



PEDERNALES ELECTRIC
COOPERATIVE, INC.
CONSTRUCTION ASSEMBLY UNIT

3Φ 10 ft Crossarm Construction

drawn: REB	approved MJB	date: October 21, 2015	C2-1/C2-1N
----------------------	------------------------	---------------------------	-------------------



REV | A | DATE | 09/30/2020 | REVISION | ISSUE FOR CONSTRUCTION | BY | RWC | CHK | SSS | APR | MMG



CONSTRUCTION
ASSEMBLY UNIT

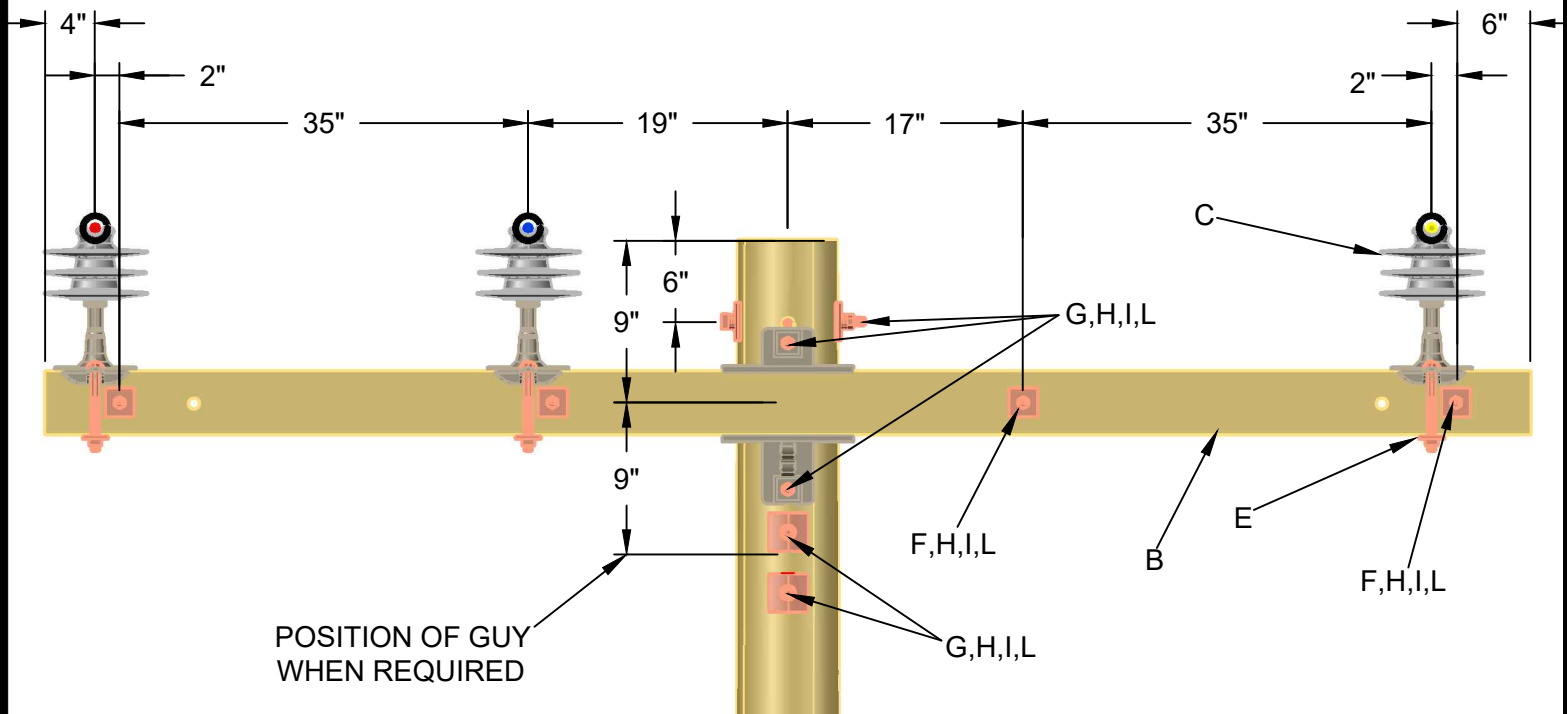
30° SMALL ANGLE
CROSSARM CONSTRUCTION
USING SADDLE PINS

drawn:	approved:	date:
RWC	MMG	09/30/2020

C2-2/C2-2N
PAGE 1 OF 2

NOTE:

- CENTER-PHASE WIRE OR NEUTRAL WIRE MAY BE LOCATED ON THE OPPOSITE SIDE OF THE POLE WHERE NECESSARY TO AVOID CROSSING OF WIRES IN MIDSPAN.
- SEE DESIGN GUIDELINES FOR ADDITIONAL INFORMATION.
- INSTALL A 5/8" BOLT WITH FLAT OR CURVED WASHERS, COIL WASHERS AND LOCK NUTS IN THE PRE-DRILLED HOLE 6" FROM THE POLE TOP, PARALLEL TO THE CROSSARM TO PREVENT THE POLE FROM SPLITTING.



ITEM	MATERIAL NUMBER	DESCRIPTION	QUANTITY
A	2000148	BRACKET DA CLEVIS	1(0)
B	2001324	XARM FIBERGLASS 10'	2
C	2000541	INSULATOR PIN TYPE CL 55-7	6
D	2000544	INSULATOR SPOOL CL 53-2	1(0)
E	2000625	PIN XARM 1 3/8" THD CLAMP TYPE	6
F	*	BOLT DOUBLE ARMING 5/8"	AS REQ'D
G	*	BOLT MACHINE 5/8"	AS REQ'D
H	*3000153	LOCKNUT 5/8" MF	AS REQ'D
I	*3000240	WASHER SQUARE FLAT 2 1/4" WITH 11/16" HOLE	AS REQ'D
I	*3000237 or	WASHER SQUARE CURVED FOR 3/4" BOLT 4" WITH 15/16" HOLE	AS REQ'D
I	*3000235	WASHER SQUARE CURVED FOR 5/8" BOLT 3" WITH 13/16" HOLE	AS REQ'D
J	*	PRIMARY AND NEUTRAL TIES	AS REQ'D
K	*2000347	CONNECTOR SPLIT BOLT GP 6	AS REQ'D
L	*3000227	WASHER COIL 5/8"	AS REQ'D

SPECIFY ASSEMBLY UNIT C2-2N LESS THE NEUTRAL MATERIAL. QUANTITIES IN PARENTHESES ARE FOR ASSEMBLY UNIT C2-2N.

*DENOTES "GRAB BAG" ITEM - ALL BOLT LENGTHS DEPEND ON POLE CLASS.

REV A DATE 09/30/2020 REVISION ISSUE FOR CONSTRUCTION BY RWC CHK SSS APR MMG

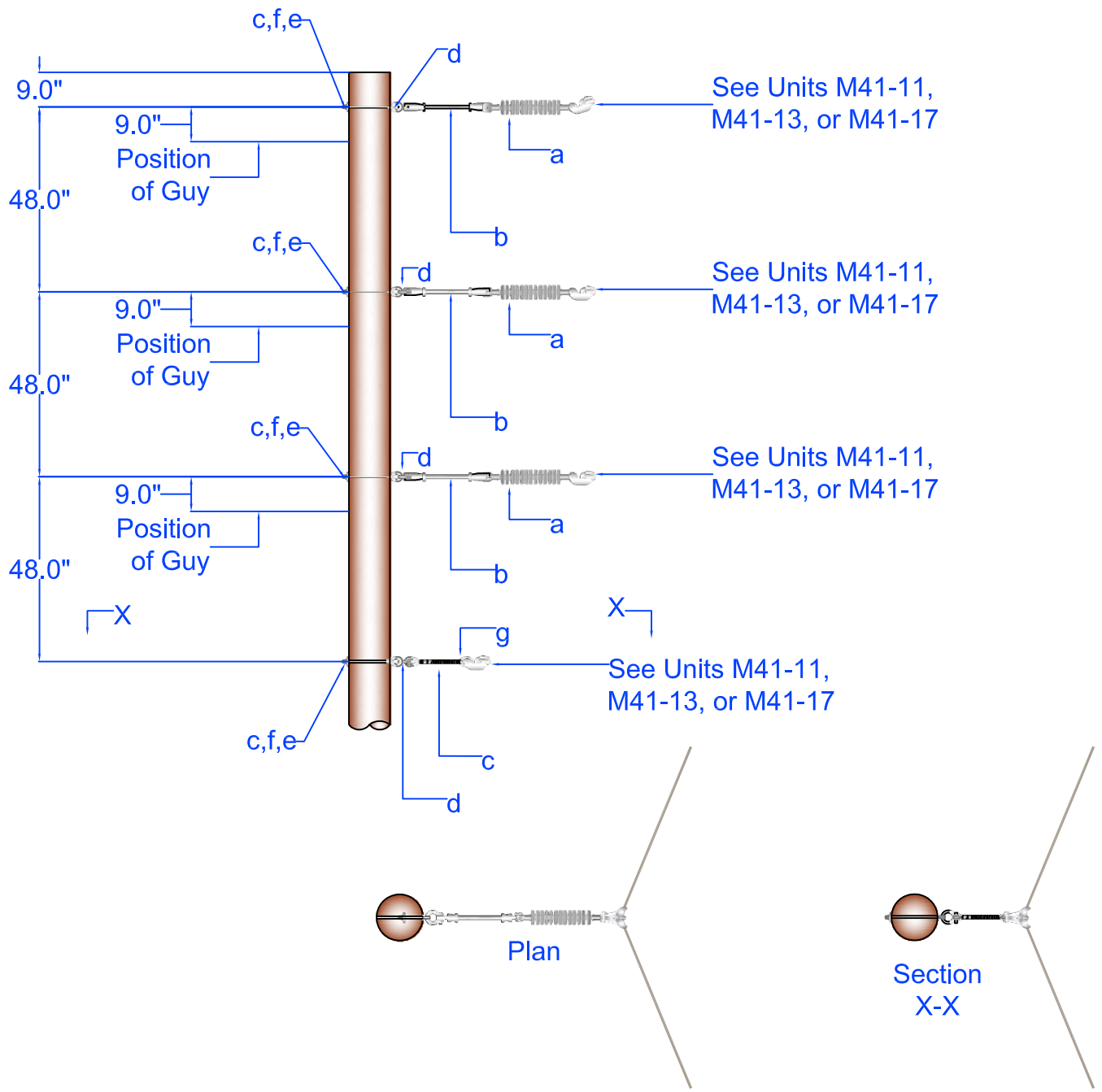


CONSTRUCTION
ASSEMBLY UNIT

3Ø SMALL ANGLE
CROSSARM CONSTRUCTION
USING SADDLE PINS

drawn: RWC	approved: MMG	date: 09/30/2020
---------------	------------------	---------------------

C2-2/C2-2N
PAGE 2 OF 2



Note: See design guidelines for additional information

Item	Material Number	Item Quantity	Item Description	Item	Material Number	Item Quantity	Item Description
a	2000551	3	Insulator Susp Poly 35KV Cl	e	* 3000153	4 (3)	Locknut 5/8" M F
b	2000539	3	Insulator Lnk Ext Fbgls 12"C-TE Insulator	f	* 3000240	4 (3)	Washer Sq F 2 1/4
c	*	4 (3)	Bolt Eye 5/8"	g	*2000610	4(3)	Nut Eye 5/8"
d	200262	4 (3)	Clevis Anchor Shackle Sml				

Specify C3N for unit C3 less neutral material Quantities shown in parenthesis are for C3N.

* Denotes "Grab Bag" item. Bolt lengths are dependent on pole class.

Install (4) M41-11 for #4 or #1/0 ACSR or (4) M41-13 for #336 AAC or (4) M41-17 for #795 AAC conductors.

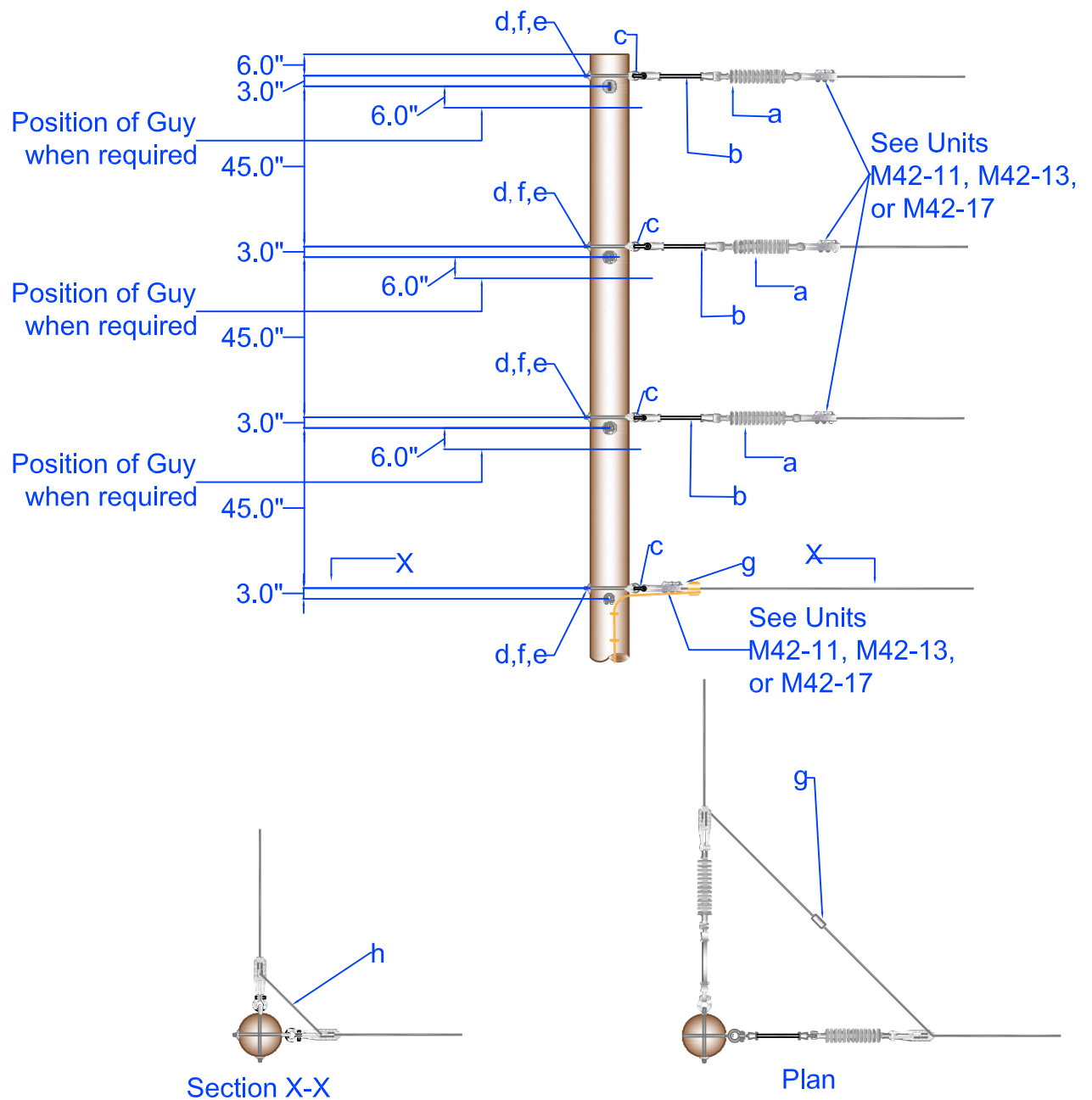


PEDERNALES ELECTRIC
COOPERATIVE, INC.
CONSTRUCTION ASSEMBLY UNIT

**3Φ Medium Angle, Vertical Construction,
Any Grade of Construction**

drawn: REB	approved MJB	date: December 1, 2011
----------------------	------------------------	---------------------------

C3/C3N



Note: See design guidelines for additional information

Item	Material Number	Item Quan	Item Description	Item	Material Number	Item Quantity	Item Description
a	2000551	6	Insulator Susp Poly 35KV CI	e	* 3000153	8 (6)	Locknut 5/8" M F
b	2000539	6	Insulator Lnk Ext Fbgl's 12"C-TE Insulator Guy Strain	f	*3000240	8 (6)	Washer Sq F 2 1/4"
c	2000262	8(6)	Clevis Anchor Shackle Sml	g	*	As Required	Connectors
d	*	8 (6)	Bolt Eye 5/8"	h	*	As Required	Jumpers

Specify C4N for unit C4 less neutral material Quantities shown in parenthesis are for C4N.

* Denotes "Grab Bag" item. Bolt lengths are dependent on pole class.

Install (8) M42-11 for #4 or #1/0 ACSR or (8) M42-13 for #336 AAC or (8) M42-17 for #795 AAC conductors.



PEDERNALES ELECTRIC
COOPERATIVE, INC.
CONSTRUCTION ASSEMBLY UNIT

**3Φ Large angle, Vertical Construction
Any Grade of Construction**

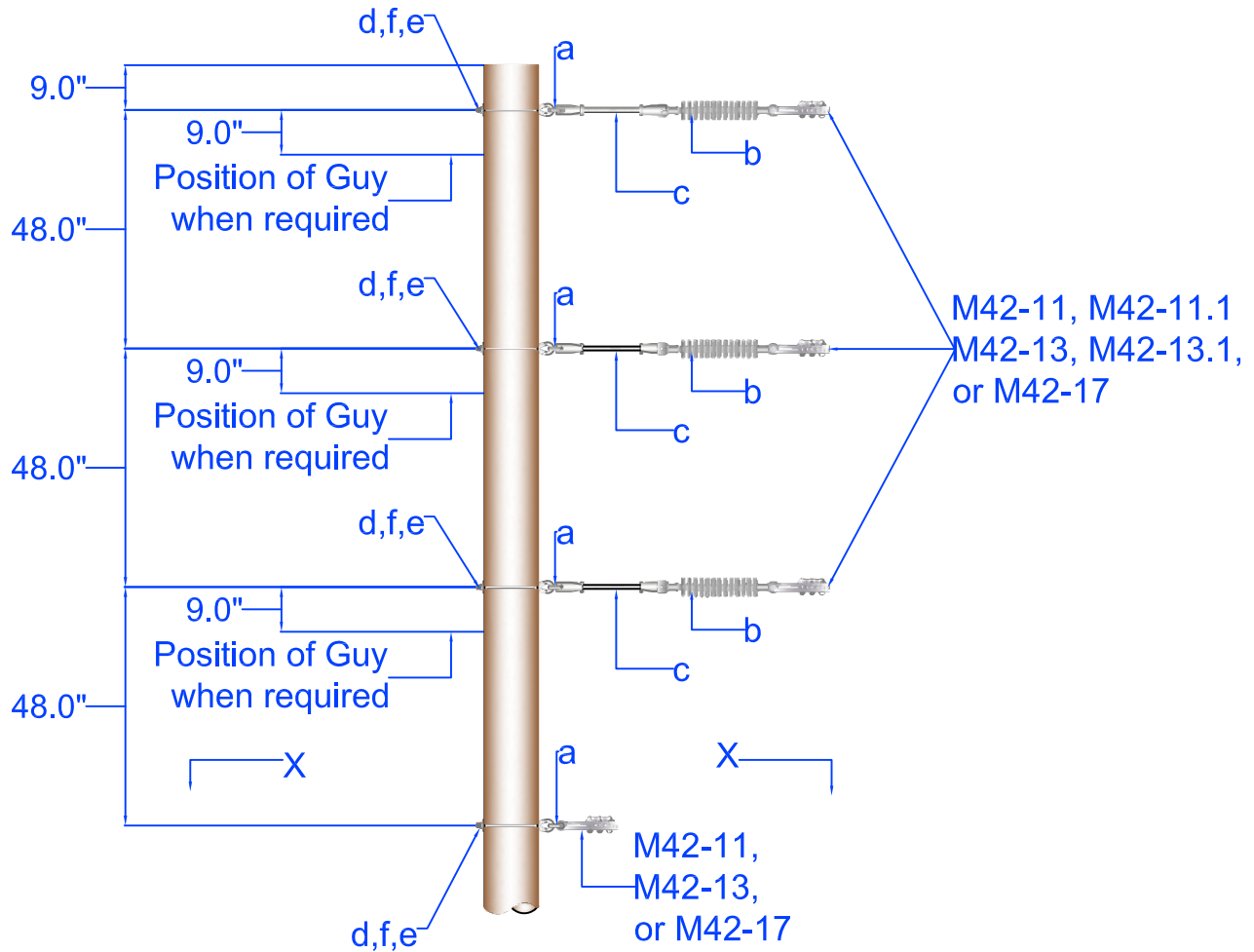
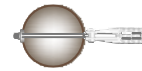
drawn: REB	approved MJB	date: December 1, 2011
----------------------	------------------------	---------------------------

C4/C4N

Plan



Section X-X



Note: See design guidelines for additional information

Item	Material Number	Item Quantity	Item Description	Item	Material Number	Item Quantity	Item Description
a	2000262	4(3)	Clevis Anchor Shackle Sml	d	*	4 (3)	Bolt Eye 5/8"
b	2000551	3	Insulator Susp Poly 35KV Cl	e	*3000153	4 (3)	Locknut 5/8" M F
c	2000539	3	Insulator Lnk Ext Fbgls 12"C-TE Insulator Guy Strain	f	*3000240	4 (3)	Washer Sq F 2 1/4

Specify C5N for unit C5 less neutral material. Quantities shown in parenthesis are for C5N.

* Denotes "Grab Bag" item. Bolt lengths are dependent on pole class.

Install (4) M42-11 for #4 or #1/0 ACSR or (4) M42-13 for #336 AAC or (4) M42-17 for #795 AAC conductors.

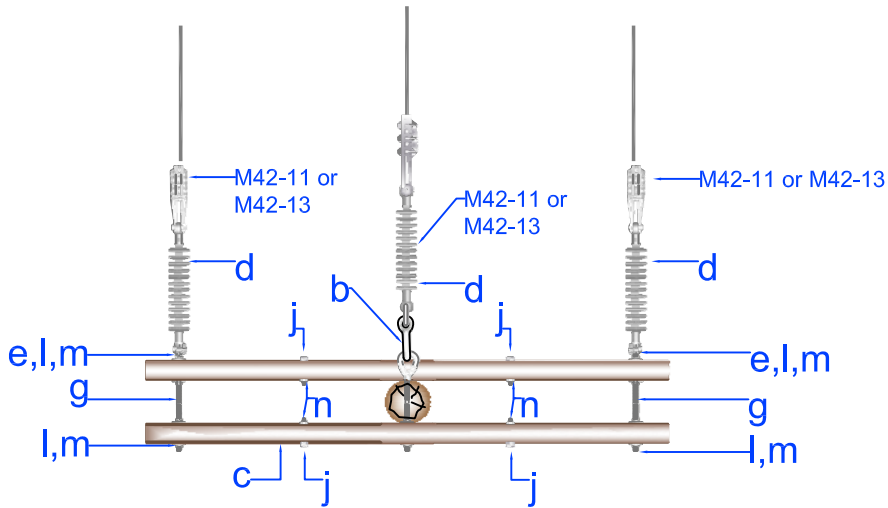


PEDERNALES ELECTRIC
COOPERATIVE, INC.
CONSTRUCTION ASSEMBLY UNIT

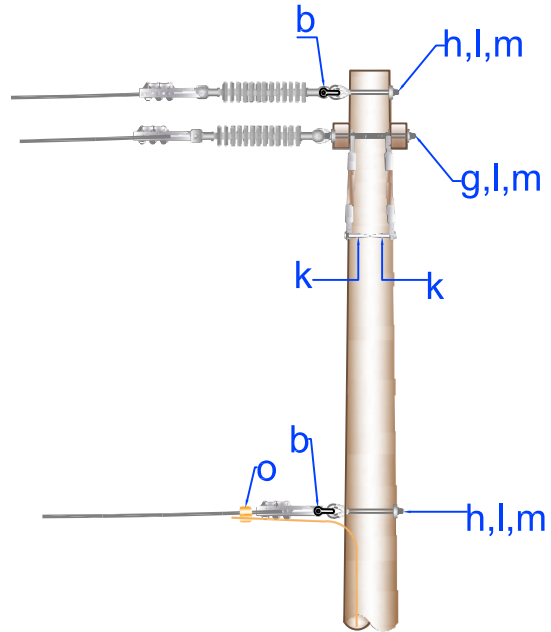
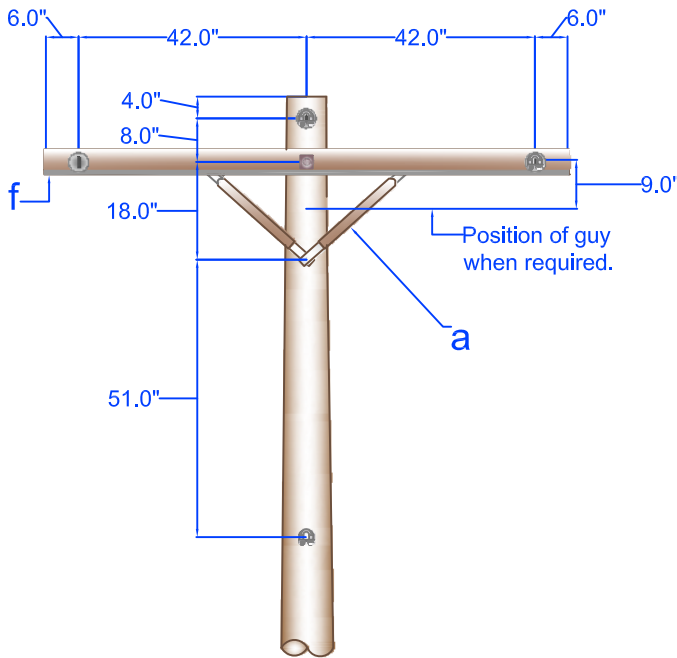
**3Φ Deadend, Vertical Construction
Any Grade of Construction**

drawn:	approved	date:
REB	MJB	December 1, 2011

C5/C5N



Removal Only



Item	Material Number	Item Quantity	Item Description	Item	Material Number	Item Quantity	Item Description
a	2000135	4	Brace Wood Xarm 38" Spn 18" Drp	h	*	2(1)	Bolt Eye 5/8"
b	2000262	2(1)	Clevis Anchor Shackle Sml	j	*2000088	4	Bolt Machine 3/8" x 4 1/2"
c	2001300	2	Xarm 3 3/4" x 4 3/4" x 8'	k	*3000188	2	Screw Lag 1/2" x 4"
d	200551	3	Insulator Susp Poly 35KV Cl	l	*3000153	12(11)	Locknut 5/8" M F
e	*2000610	2	Nut Eye 5/8"	m	*3000240	12(11)	Washer Sq F 2 1/4
f	2000772	2	Protector Fbrgls 3 3/4" x 8'	n	*3000152	4	Locknut 3/8" M F
g	*	3	Bolt Dbl Arming 5/8"	o	*	As Required	Connector

Specify C7N for unit C7 less neutral material. Quantities shown in parenthesis are for C7N

*Denote "Grab Bag" item. Bolt Lengths are dependent on pole class.

Install (4) M42-11 for #4 or #1/0 ACSR or (4) M42-13 for #336 AAC conductors.

For full tension #4 ACSR or Slack Spans #1/0 ACSR and #336 AAC. Not to be used for #795 AAC Conductors.



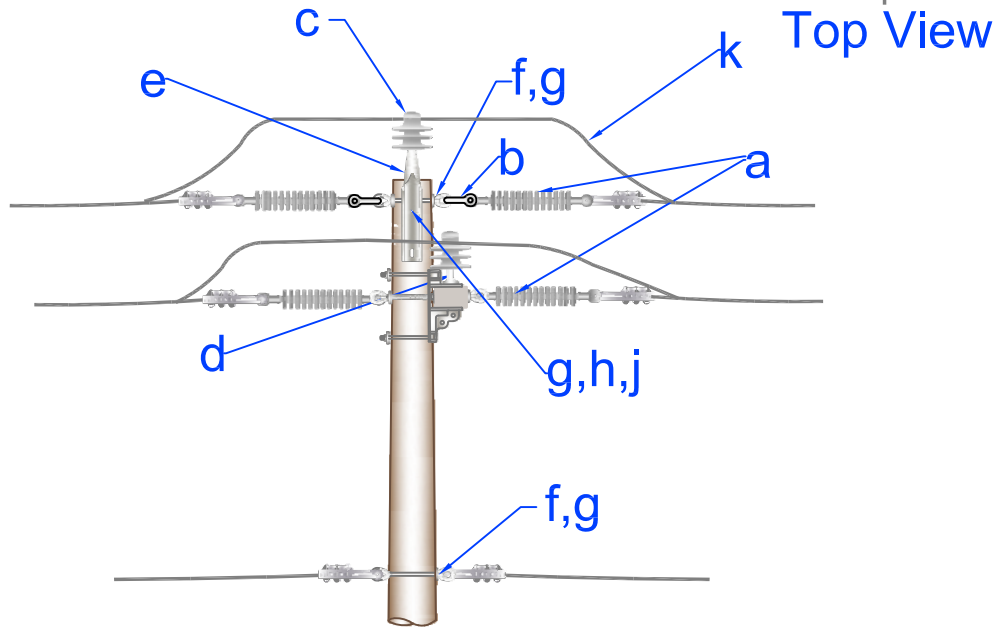
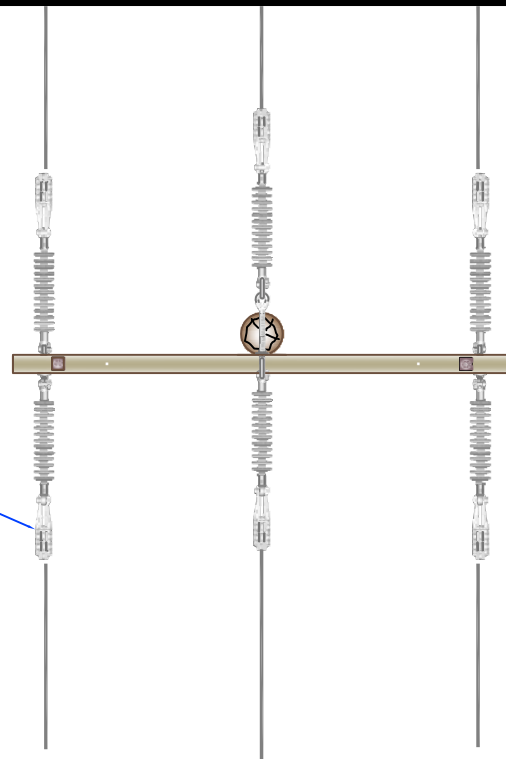
PEDERNALES ELECTRIC
COOPERATIVE, INC.
CONSTRUCTION ASSEMBLY UNIT

3Φ Single Deadend, Crossarm Construction
Full Tension #4 ACSR -
Slack Spans for #1/0 ACSR and #336 AAC

drawn:	approved	date:
REB	MJB	July 17, 2013

C7/C7N

Typical on all Conductors.
M42-11, M42-13, or
M42-17,



Item	Material Number	Item Quantity	Item Description	Item	Material Number	Item Quantity	Item Description
a	2000551	3	Insulator Susp Poly 35KV CI	f	*2000610	4(3)	Nut Eye 5/8"
b	2000262	4(3)	Clevis Anchor Shackle Sml	g	*3000153	6(5)	Locknut 5/8 MF
c	2000541	3	Insulator Pin Type CI 55-7	h	*3000240	2	Washer Sq F 2 1/4
d	2000626	2	Pin Xarm 1 3/8" Thd Reg	j	*	2	Machine Bolt 5/8"
e	2000621	1	Pin Pole Type 20" - 1 3/8" Thd	k	*	As Required	Jumpers

Specify C7XN for unit C7X less neutral material. Quantities shown in parenthesis are for C7XN

*Denote "Grab Bag" item. Bolt Lengths are dependent on pole class.

Install (4) M42-11 for #4 or #1/0 ACSR, (4) M42-13 for #336 AAC or (4) M42-17 for #795 AAC conductors



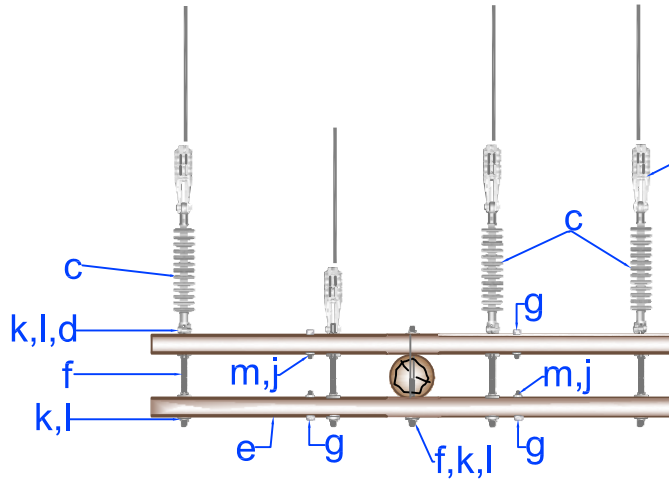
PEDERNALES ELECTRIC
COOPERATIVE, INC.
CONSTRUCTION ASSEMBLY UNIT

3Φ Tap off of a 3Φ Deadend

drawn:	approved	date:
REB	MJB	October 3, 2014

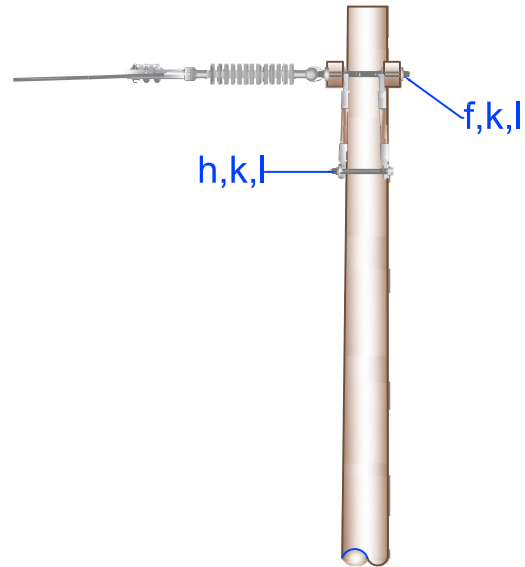
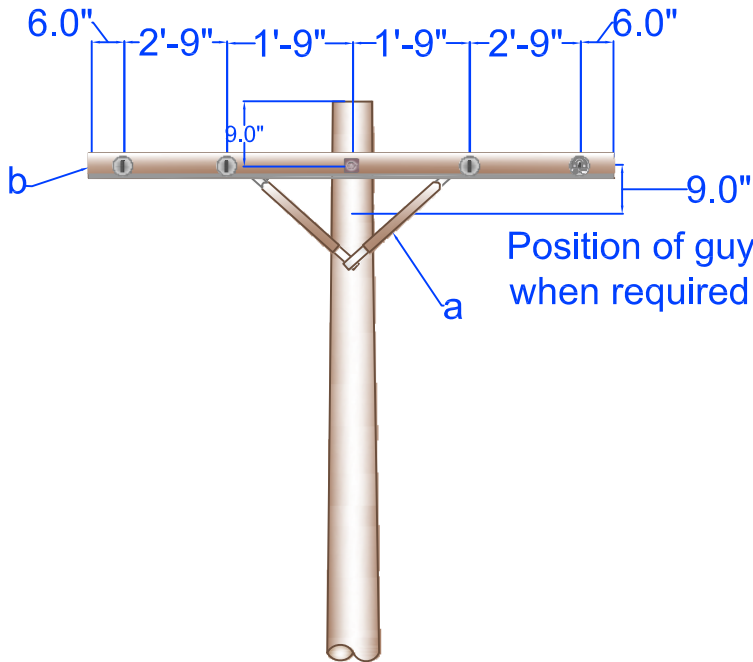
C7X/C7XN

Typical for both outside phases



Typical for all phases
M42-11 or M42-13

Removal Only



Item	Material Number	Item Quantity	Item Description	Item	Material Number	Item Quantity	Item Description
a	2000136	4	Brace Wood Xarm 60" Spn 18"Drp	g	*2000079	4	Bolt Machine 1/2" x 6"
b	2001299	2	Xarm 3 3/4" x 4 3/4" x 10'	h	*	1	Bolt Machine 5/8"
c	2000551	3	Insulator Susp Poly 35KV Cl	j	*3000148	4	Locknut 1/2" M F
d	*2000610	4	Nut Eye 5/8"	k	*3000153	19	Locknut 5/8" M F
e	2000774	2	Protector Xarm 3 3/4' x 10'	l	*3000240	19	Washer Sq F 2 1/4
f	*	5	Bolt Dbl Arming 5/8"	m	*3000229	4	Washer Round 1/2"

There is no unit C7-2N

* Denotes "Grab Bag" item. Bolt lengths are dependent on pole class.

Install (4) M42-11 for #4 or #1/0 ACSR, (4) M42-13 for #336 AAC conductors.

For full tension #4 ACSR or #1/0 ACSR and #336AAC Slack Spans. Not to be used for #795 AAC Conductors.



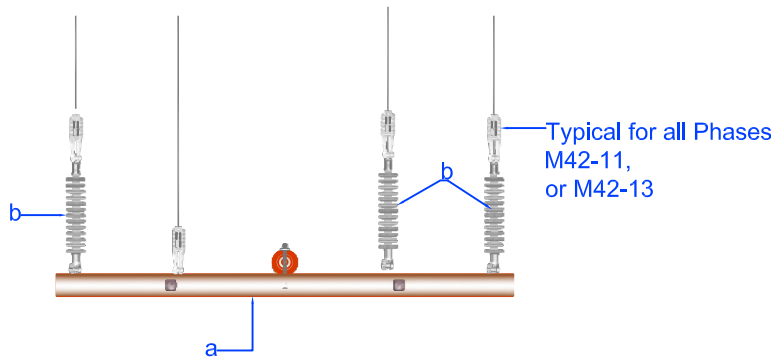
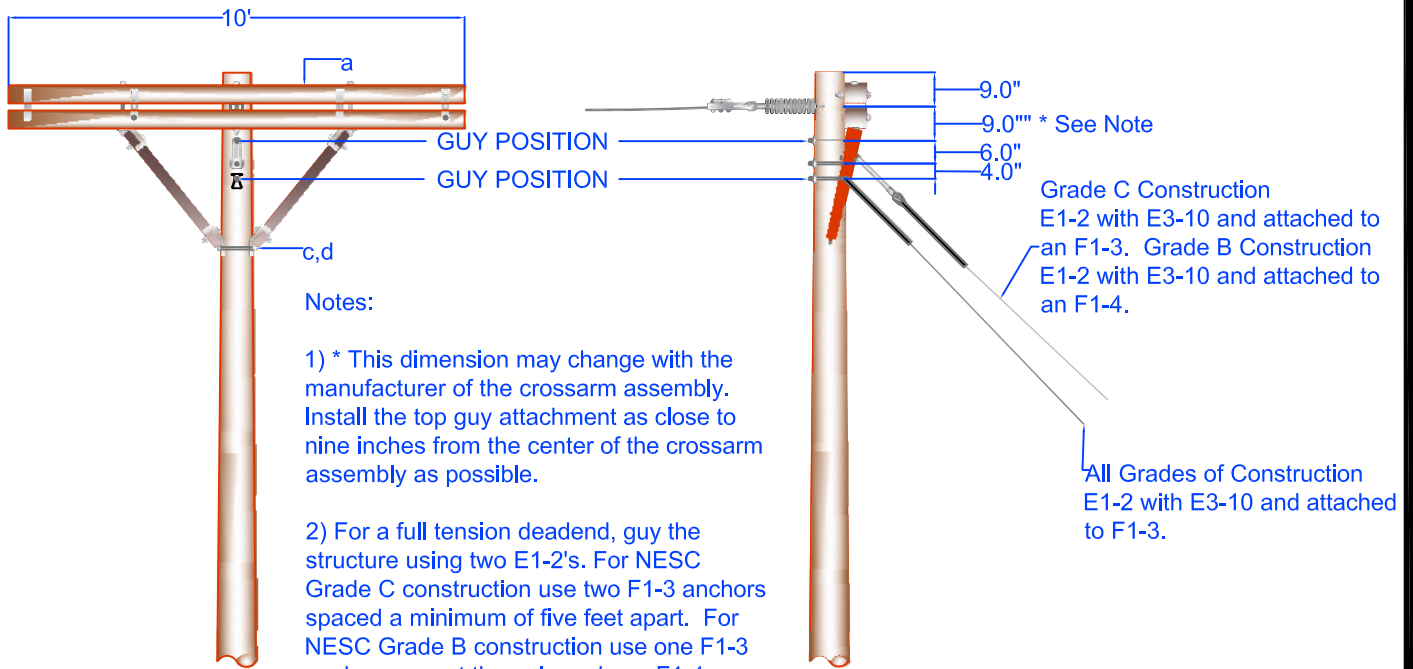
PEDERNALES ELECTRIC
COOPERATIVE, INC.
CONSTRUCTION ASSEMBLY UNIT

3Φ Single Deadend, Crossarm Construction
Full Tension #4 ACSR or #1/0 ACSR and
#336 AAC Slack Spans. 10' Four Wire Deadend

drawn: REB	approved MJB	date: July 17, 2013
----------------------	------------------------	------------------------

C7-2

Removal Only



Note: See design guidelines for additional information

Item	Material Number	Item Quantity	Item Description	Item	Material Number	Item Quantity	Item Description
a	2001314	1	Xarm DE 3 3/4" x 7 3/4" x10'4W	c	*	1	Bolt Machine 5/8"
b	2000551	3	Insulator Susp Poly 35KV CI	d	*3000153	1	Locknut 5/8" M F

There is no unit C7-4N. * Denotes "Grab Bag" item. Bolt lengths are determined by pole class.

Install (4) M42-11 for #4 or #1/0 ACSR (M42-11.1 can be used as needed), (4) M42-13 for #336 AAC (M42-13.1 can be used as needed), (4) M42-17 for #795

Unit C7-4 should be used on #795 AAC only in "Slack Span" situations.



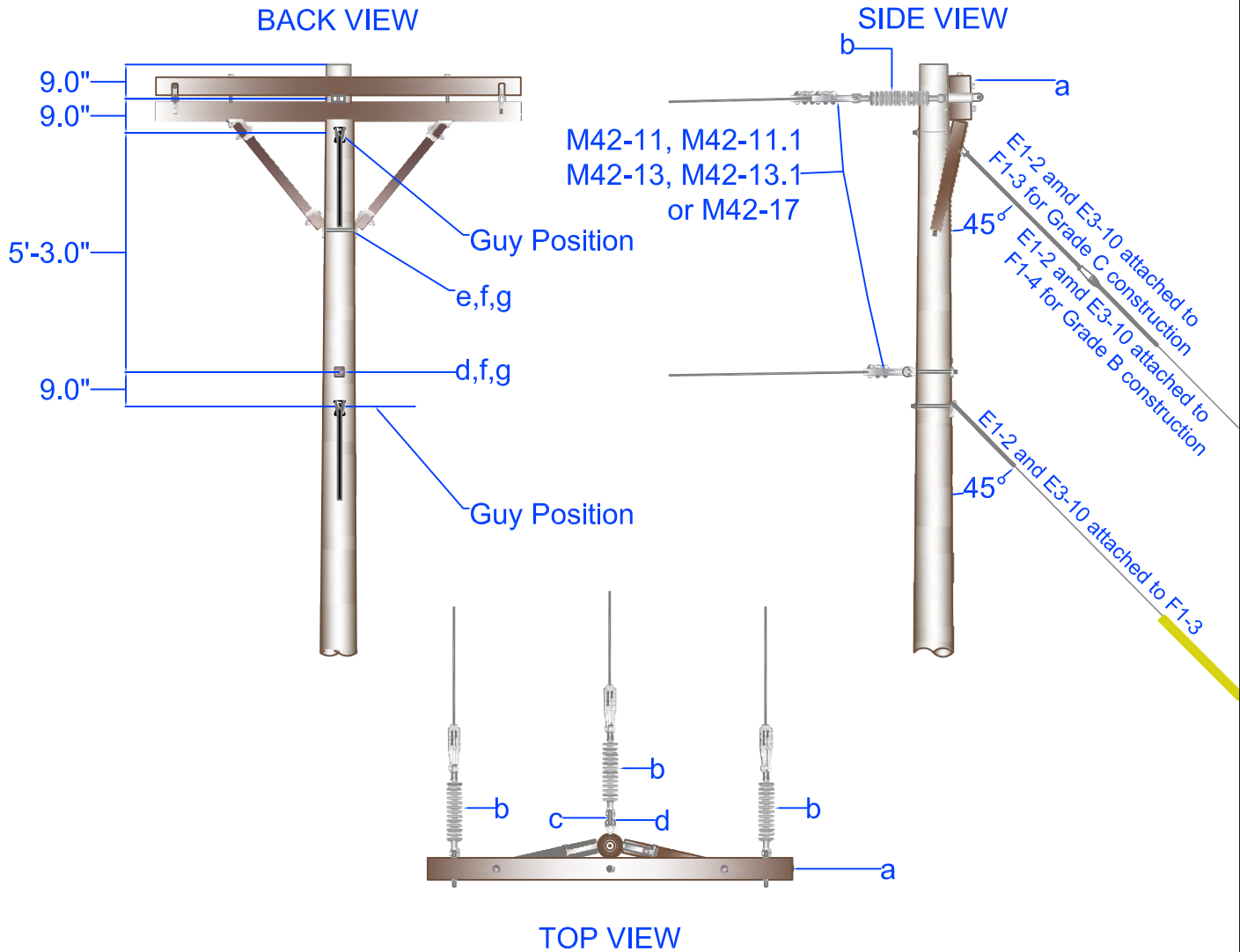
PEDERNALES ELECTRIC
COOPERATIVE, INC.
CONSTRUCTION ASSEMBLY UNIT

3Φ Single Deadend, Crossarm Construction
Full Tension #1/0 ACSR and #336 AAC - Slack Spans for
#795 AAC. 10' Four Wire Deadend

drawn:	approved	date:
REB	MJB	July 17, 2013

C7-4

Removal Only



Note: See Design Guidelines for additional information.

Item	Material Number	Item Quantity	Item Description	Item	Material Number	Item Quantity	Item Description
a	2001312	1	Xarm DE 3 3/4" x 5 3/4" x 8'3W	e	*	1	Bolt Machine 5/8"
b	2000551	3	Insulator Susp Poly 35KV CI	f	*3000153	3 (2)	Locknut 5/8" M F
c	2000262	1	Clevis Anchor Shackle Sml	g	*3000240	3 (2)	Washer Sq F 2 1/4
d	*	2 (1)	Bolt Eye 5/8"				

Specify C7-5N for unit C7-5 less neutral material. Quantities shown in parenthesis are for C7-5N.

Install (4) M42-11 for #4 or #1/0 ACSR (M42-11.1 can be used as needed), (4) M42-13 for #336 AAC (M42-13.1 can be used as needed), (4) M42-17 for #795

Unit C7-5 should be used on #795 AAC only in "Slack Span" situations. *Denotes "Grab Bag" item. Bolt lengths are dependent on pole class.



PEDERNALES ELECTRIC
COOPERATIVE, INC.
CONSTRUCTION ASSEMBLY UNIT

**3Φ Single Deadend, Crossarm
Construction Full Tension #1/0 ACSR
and #336 AAC - For Slack Spans #795 AAC**

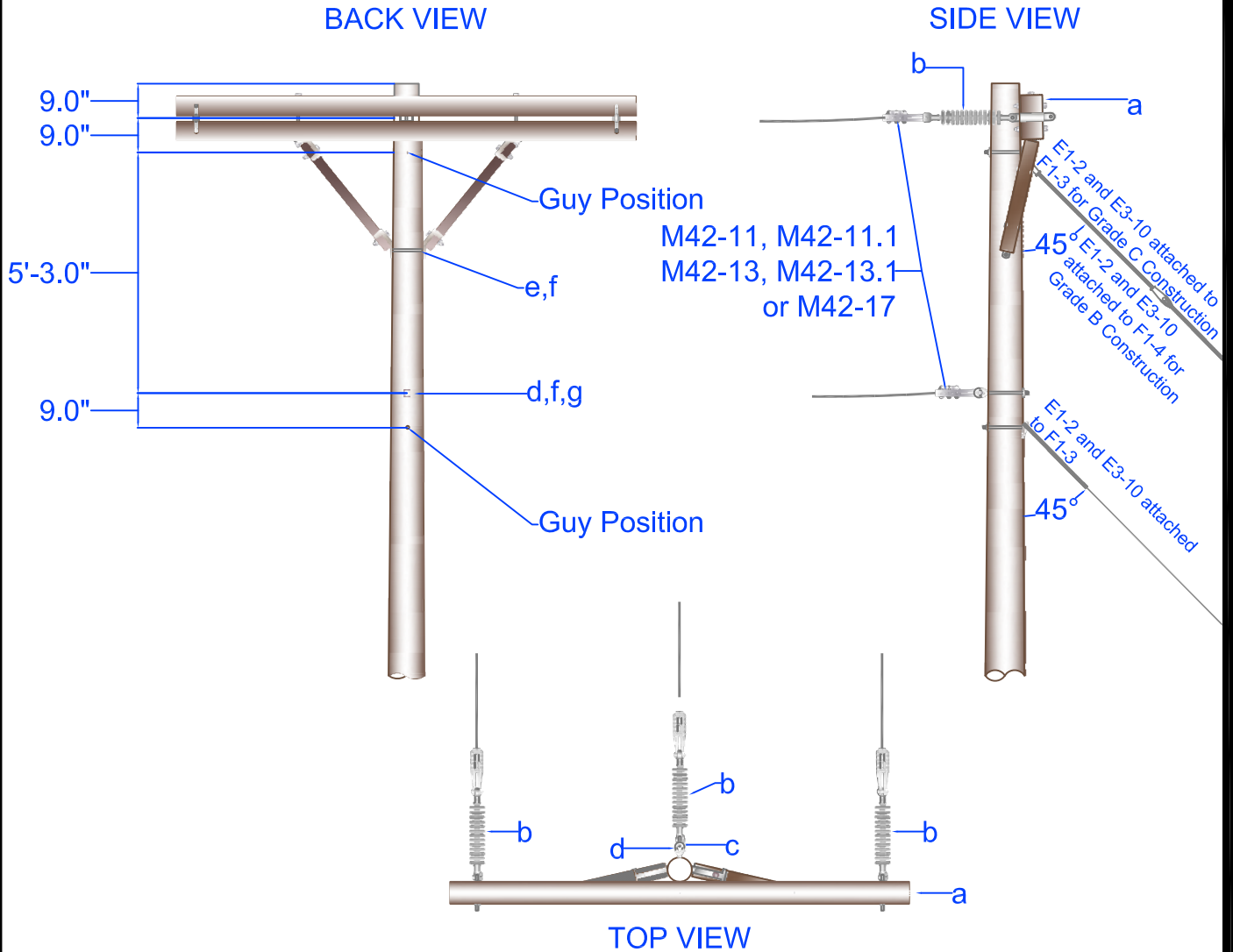
drawn:	approved	date:
REB	MJB	July 17, 2013

C7-5/C7-5N

Removal Only

Note:

Space anchors a minimum of five feet apart. Use a minimum of two grouted-in anchors to replace one F1-4.



Note; See Design Guidelines for additional information.

Item	Material Number	Item Quantity	Item Description	Item	Material Number	Item Quantity	Item Description
a	2001313	1	Xarm DE 3 3/4" x 5 3/4" x 10'3W	e	*	1	Bolt Machine 5/8"
b	2000551	3	Insulator Susp Poly 35KV CI	f	*3000153	3 (2)	Locknut 5/8" M F
c	2000262	1	Clevis Anchor Shackle Sml	g	*3000240	3 (2)	Washer Sq F 2 1/4
d	*	2 (1)	Bolt Eye 5/8"				

Specify C7-6N for unit C7-6 less neutral material. Quantities shown in parenthesis are for C7-6N.

Install (4) M42-11 for #4 or #1/0 ACSR (M42-11.1 can be used as needed), (4) M42-13 for #336 AAC (M42-13.1 can be used as needed), (4) M42-17 for #795

Unit C7-6 should be used on #795 AAC only in "Slack Span" situations. *Denotes "Grab Bag" item. Bolt lengths are dependent on pole class.



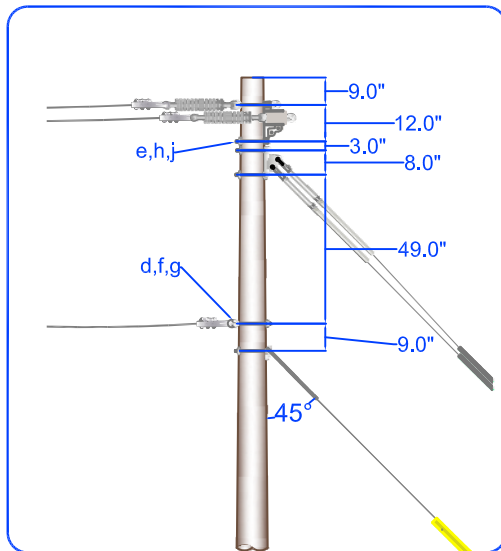
PEDERNALES ELECTRIC
COOPERATIVE, INC.
CONSTRUCTION ASSEMBLY UNIT

3Φ Single Deadend, Crossarm Construction
Full Tension #1/0 ACSR and #336 AAC - For slack spans #795 AAC. 10' Three Wire Deadend

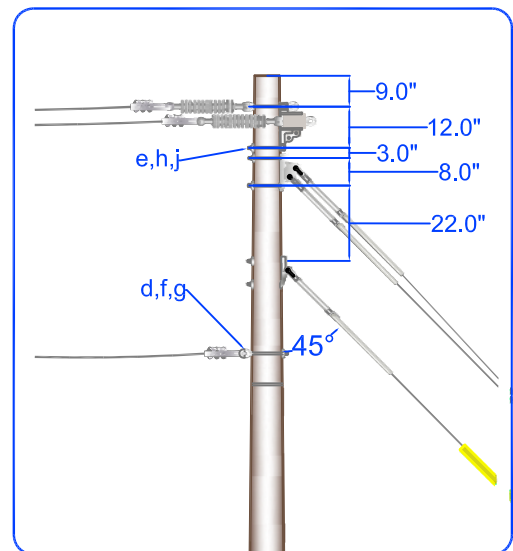
drawn:	approved	date:
REB	MJB	July 17, 2013

C7-6/C7-6N

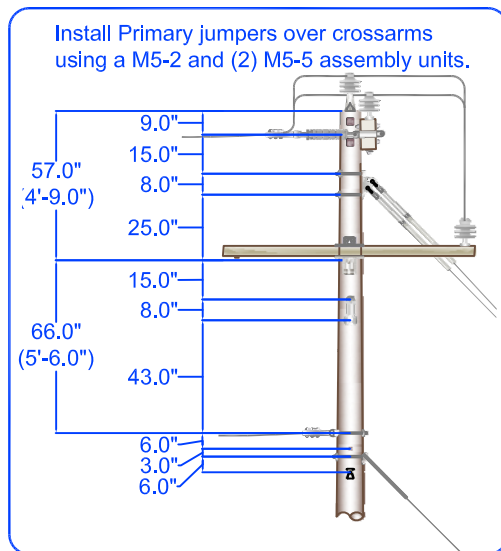
All other Grades of Construction and wire sizes.



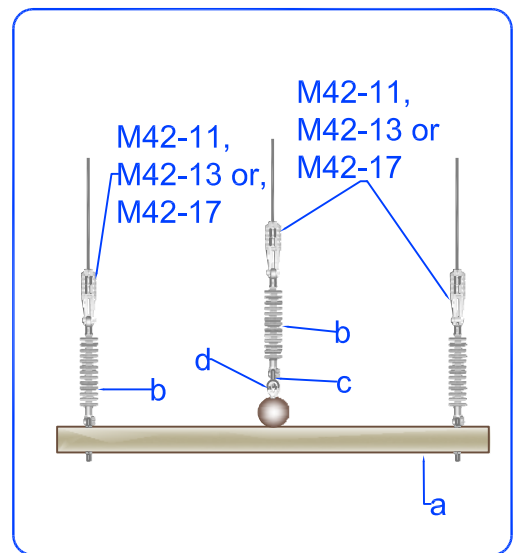
795 AAC Grade B Construction Only.



Dimensions if two C7-7 are installed on a pole.



Top View



Note: If the system neutral is larger than #336 use a pole ground larger than #6 copper, minimum of #2 copper for a #795 neutral. See NESC 093C2. See Design Guidelines for additional information.

Item	Material Number	Item Quantity	Item Description	Item	Material Number	Item Quantity	Item Description
a	2001317	1	Xarm DE Fiberglass 8' 3 Wire	f	*3000153	2 (1)	Locknut 5/8" M F
b	2000551	3	Insulator Susp Poly 35KV Cl	g	*3000240	2 (1)	Washer Sq F 2 1/4
c	2000262	1(0)	Clevis Anchor Shackle Sml	h	*3000151	2	Locknut 3/4" M F
d	*	2(1)	Bolt Eye 5/8"	j	*3000230	2	Washer SQ F 21/2x21/2 13/16H
e	*	2	Bolt Machine 3/4"				

Specify C7-7N for unit C7-7 less neutral material. Quantities shown in parenthesis are for C7-7N

* Denotes "Grab Bag" item. Bolt lengths are dependent on pole class.

Install (4) M42-11 for #4 ACSR or 1/0 ACSR conductors, (4) M42-13 for #336 AAC conductors or (4) M42-17 for #795 AAC conductors.

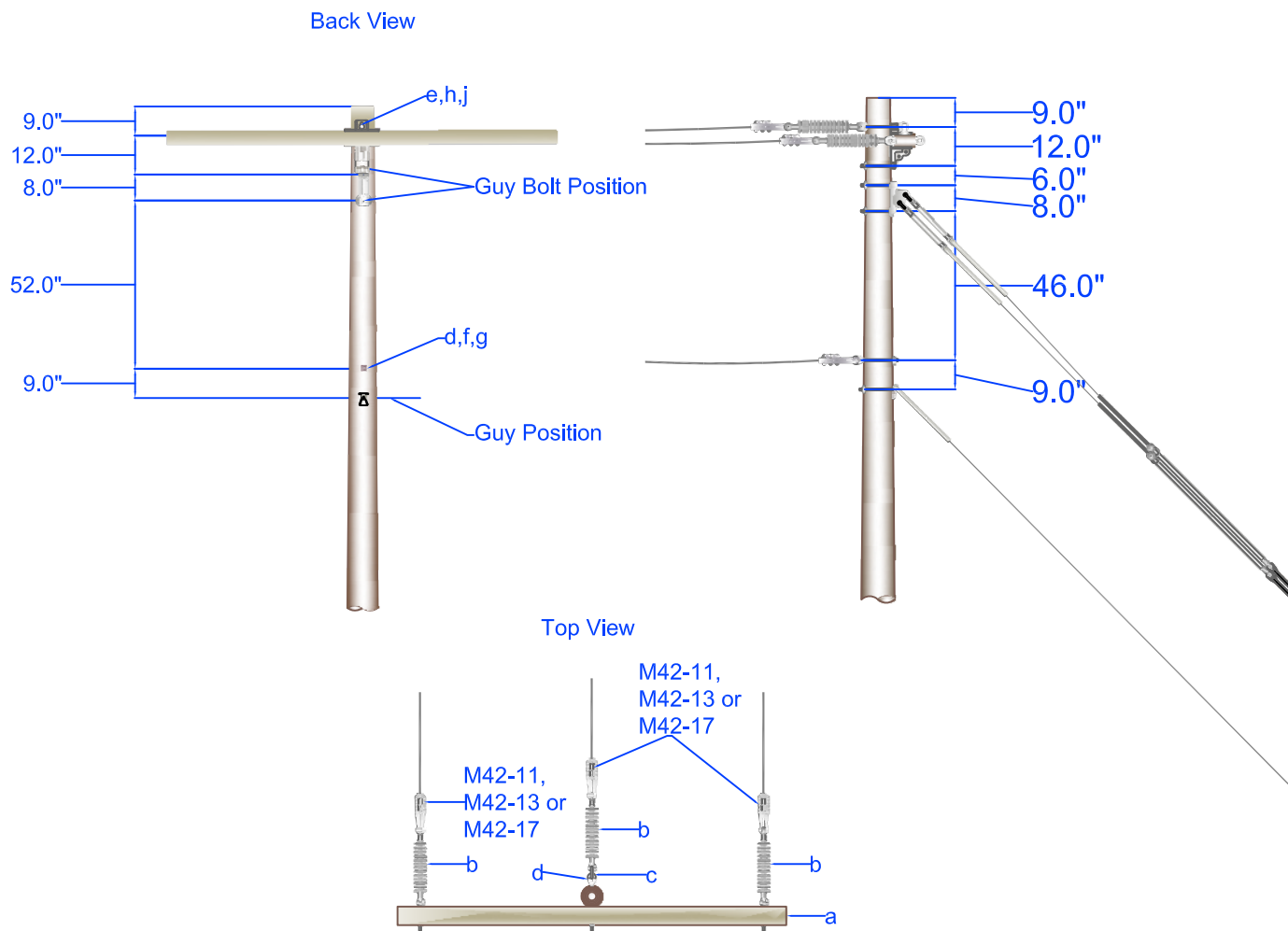


PEDERNALES ELECTRIC
COOPERATIVE, INC.
CONSTRUCTION ASSEMBLY UNIT

3Φ Single Deadend, Crossarm Construction
8' Three Wire Deadend

drawn: REB	approved MJB	date: October 22, 2015
----------------------	------------------------	---------------------------

C7-7/C7-7N



Note: If the system neutral is larger than #336 use a pole ground larger than #6 copper, minimum of #2 copper for a #795 neutral. See NESC 093C2. See Design Guidelines for additional information.

Item	Material Number	Item Quantity	Item Description	Item	Material Number	Item Quantity	Item Description
a	2001315	1	Xarm DE Fbgls 10' 4Wire	f	*3000240	2(1)	Washer Sq F 2 1/4
b	2000551	3	Insulator Susp Poly 35KV Cl	g	*3000153	2(1)	Locknut 5/8" M F
c	2000262	1(0)	Clevis Anchor Shackle Sml	h	*3000151	2	Locknut 3/4" M F
d	*	2 (1)	Bolt Eye 5/8"	j	*3000230	2	Washer SQ F 21/2x21/2 13/16H
e	*	2	Bolt Machine 3/4"				

Specify C7-8N for unit C7-8 less neutral material. Quantities shown in parenthesis are for C7-8N.

Install (4) M42-17 for #795 AAC conductors. *Denotes "Grab Bag" item. Bolt lengths are dependent on pole class.



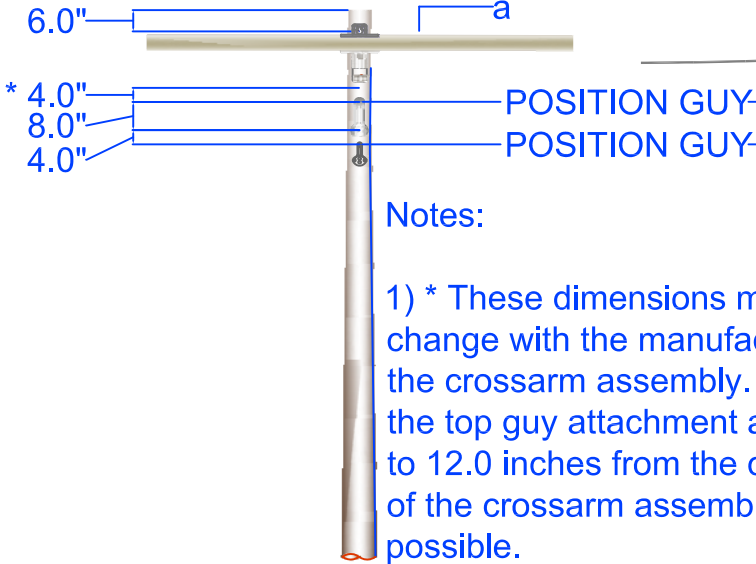
PEDERNALES ELECTRIC
COOPERATIVE, INC.
CONSTRUCTION ASSEMBLY UNIT

3Φ Single Deadend, Crossarm Construction
10' Three Wire Deadend

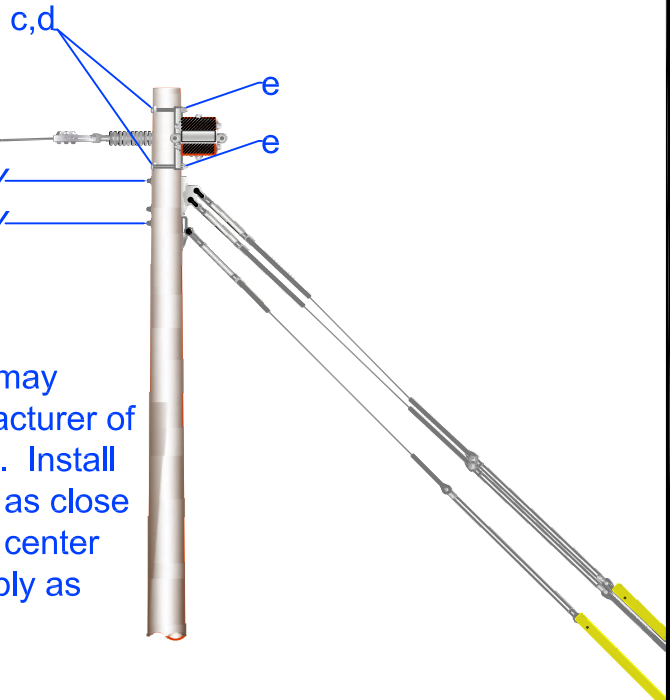
drawn:	approved	date:
REB	MJB	July 11, 2016

C7-8/C7-8N

Back View



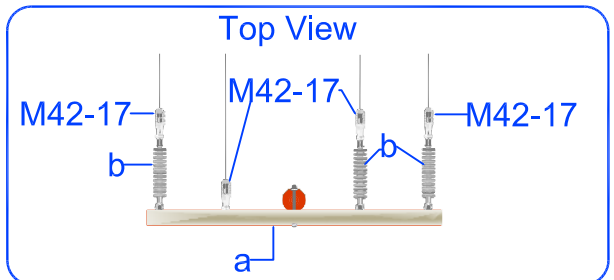
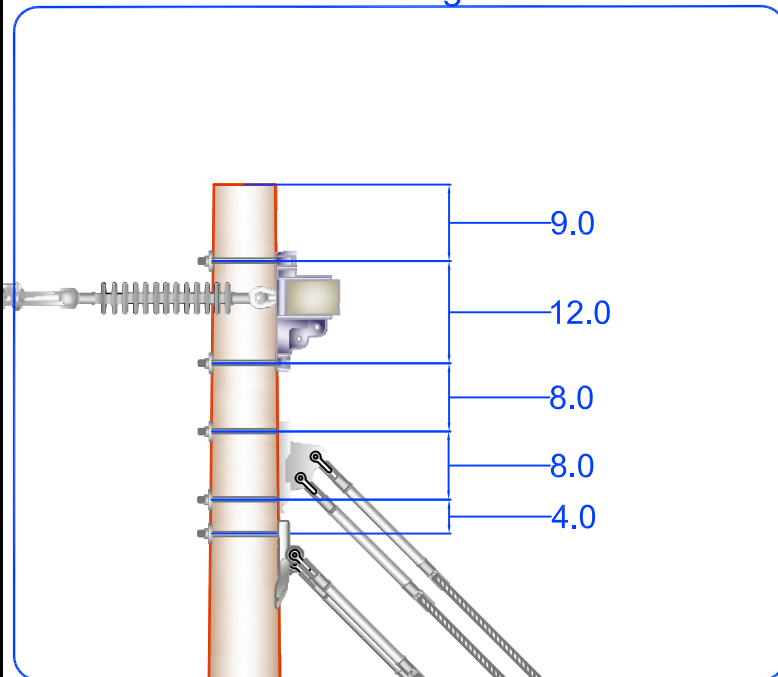
Side View



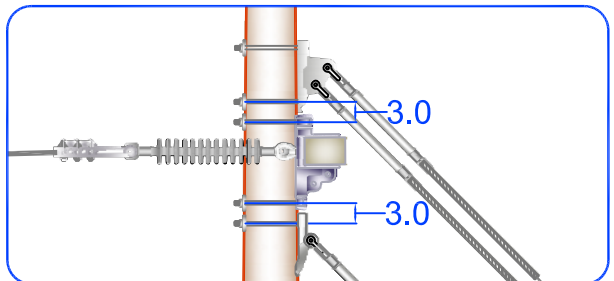
Notes:

1) * These dimensions may change with the manufacturer of the crossarm assembly. Install the top guy attachment as close to 12.0 inches from the center of the crossarm assembly as possible.

Dimensions for Fiberglass Deadend.



Alternate Guying if used as the Bottom Circuit of Multi-circuits



Item	Material Number	Item Quantity	Item Description	Item	Material Number	Item Quantity	Item Description
a	2001315	1	Xarm DE Fiberglass 10' 4 Wire	d	*3000230	2	Washer SQ F 21/2x21/2 13/16H
b	2000551	3	Insulator Susp Poly 35KV CI	e	*3000151	2	Locknuts 3/4" MF
c	*	2	Bolt Machine 3/4"				

There is no unit C7-9N

* Denotes "Grab Bag" item. Bolt lengths are dependent on pole class.

Install (4) M42-17 for #795 AAC conductors.



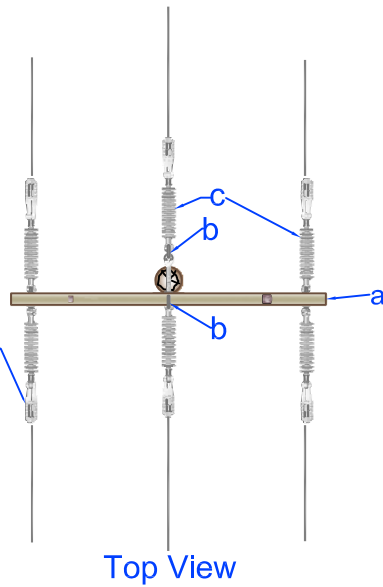
PEDERNALES ELECTRIC
COOPERATIVE, INC.
CONSTRUCTION ASSEMBLY UNIT

3Φ Single Deadend, Crossarm Construction
10' Four Wire Deadend

drawn:	approved	date:
REB	MJB	October 22, 2015

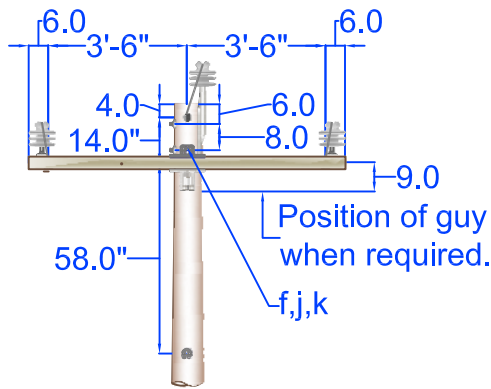
C7-9

Typical on all Conductors,
M42-11, M42-11.1,
M42-13, M42-13.1, or
M42-17,

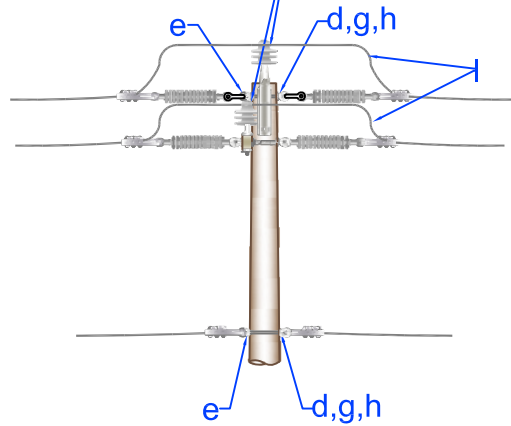


Top View

When jumpers are used
install a M5-2 and
(2) M5-5 and route
primary conductors over
the crossarms.



Position of guy
when required.



Notes:

- 1) If a C8 is installed as an angle structure and a M5-2 is not used for the center-phase jumper a split bolt (unit M5-18) should be installed about 4" from the pole top.
- 2) Install all primary jumpers over the crossarms.
- 3) See design guidelines for additional information.

Item	Material Number	Item Quantity	Item Description	Item	Material Number	Item Quantity	Item Description
a	2001317	1	Xarm DE Firberglass 8' 3 Wire	g	*3000153	2(1)	Locknut 5/8" M F
b	2000262	2(1)	Clevis Anchor Shackle Sml	h	*3000240	2(1)	Washer, square, 2 1/4" x 2 1/4"
c	2000551	6	Insulator Susp Poly 35KV Cl	j	*3000151	2	Locknut 3/4" M F
d	*2000610	2(1)	Nut Eye 5/8"	k	*3000230	2	Washer SQ F 21/2x21/2 13/16H
e	*	2 (1)	Bolt Eye 5/8"	l	*	As Required	Jumpers
f	*	2	Bolt Machine 3/4"				

Specify C8N for unit C8 less neutral material. Quantities shown in parenthesis are for C8N.

*Denotes "Grab Bag" item. Bolt lengths are dependent on pole class.

Install Units M42-11, M42-11.1, M42-13, M42-13.1, M42-17 as needed.



PEDERNALES ELECTRIC
COOPERATIVE, INC.
CONSTRUCTION ASSEMBLY UNIT

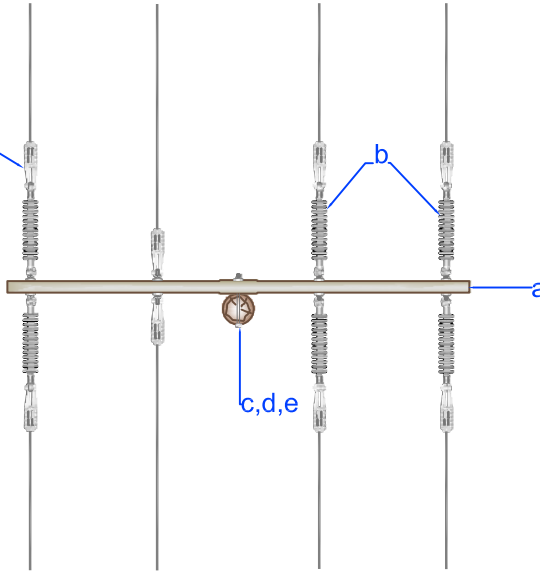
3Φ Double Deadend, Crossarm Construction
8' Three Wire Double Deadend

drawn: REB	approved MJB	date: October 22, 2015
----------------------	------------------------	---------------------------

C8/C8N

Typical to all Conductors

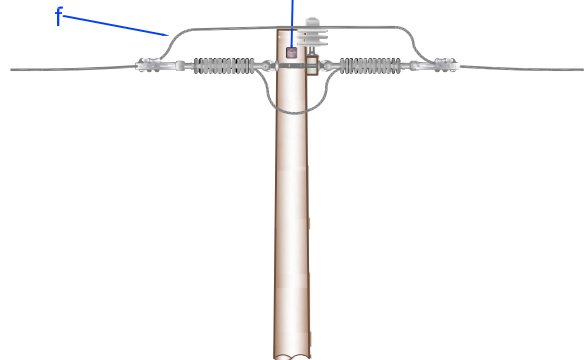
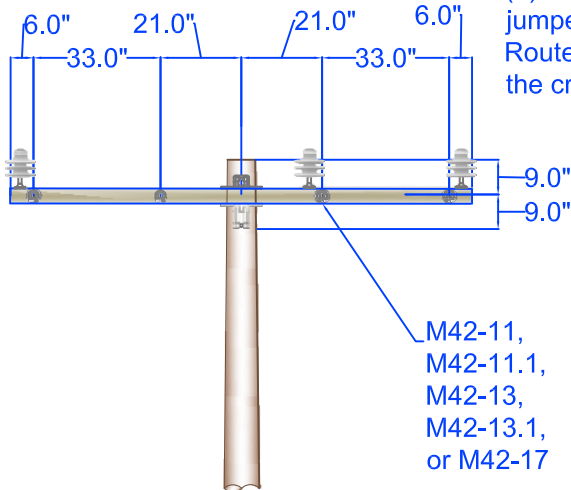
M42-11,
M42-11.1,
M42-13,
M42-13.1,
or M42-17



Plan

When jumpers are used install (3) M5-5 and route primary jumpers over the cross arms. Route neutral jumper under the cross arms.

Note: If unit is installed in an angle situation (and at the top of the pole) install a 5/8" "Split Bolt" with 2-1/4" flat washers, and lock nuts in the pre-drilled hole 6" from the pole top.



Item	Material Number	Item Quantity	Item Description	Item	Material Number	Item Quantity	Item Description
a	2001315	1	Xarm DE Fiberglass 10' 4 Wire	d	*3000151	2	Locknut 3/4" M F
b	2000551	6	Insulator Susp Poly 35KV CI	e	*3000230	2	Washer SQ F 21/2x21/2 13/16H
c	*	2	Bolt Machine 3/4"	f	*	As Required	Jumpers

There is no unit C8-1N

* Denotes "Grab Bag" item. Bolt lengths are dependent on pole class.

Install Units M42-11, M42-11.1, M42-13, M42-13.1, or M42-17 as needed.

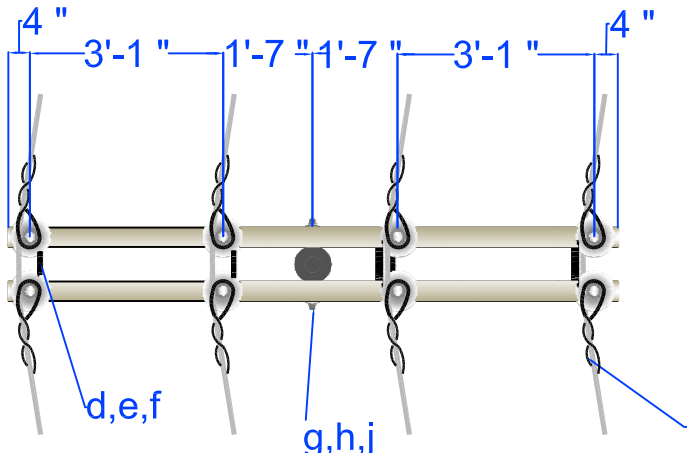
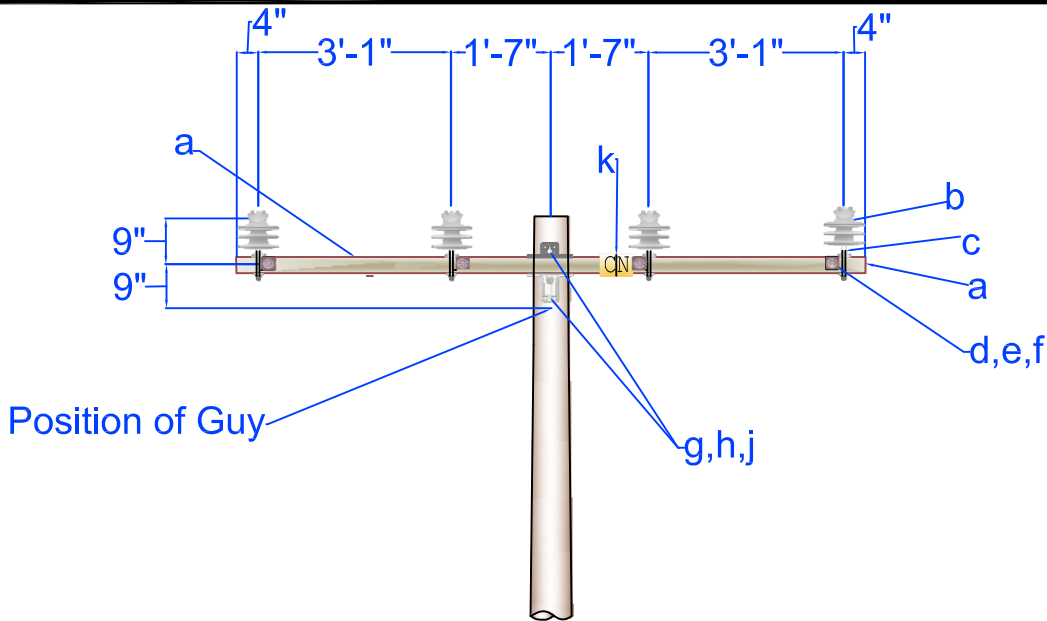


PEDERNALES ELECTRIC
COOPERATIVE, INC.
CONSTRUCTION ASSEMBLY UNIT

3Φ Double Deadend, Crossarm Construction
10' Four Wire Double Deadend

drawn:	approved	date:
REB	MJB	October 22, 2015

C8-1



Note:

1. If this unit is used as part of a double circuit structure, allow six feet between the upper and lower circuits.
2. If this unit is used on an angle, install a split bolt.

Note: See design guidelines for additional information

Item	Material Number	Item Quantity	Item Description	Item	Material Number	Item Quantity	Item Description
a	2001324	2	Xarm Fbgls 10'	g	*	2	Bolt Dbl Arming 3/4"
b	2000541	8 (6)	Insulator Pin Type CI 55-7	h	*3000151	4	Locknut 3/4" MF
c	2000626	8(6)	Pin Xarm 1 3/8" Thd Reg	j	*3000230	4	Washer SQ F 2 1/2x2 1/2 13/16H
d	*	4	Bolt Dbl Arming 5/8"	k	*	2	Letters C and N
e	*3000153	16	Locknut 5/8" M F	l	*	As Required	Primary and Neutral Ties
f	*3000240	16	Washer Sq F 2 1/4				

Specify C9N for unit C9 less neutral material. Quantities shown in parenthesis are for C9N.

* Denotes "Grab Bag" item. Bolt lengths are dependent on pole class.

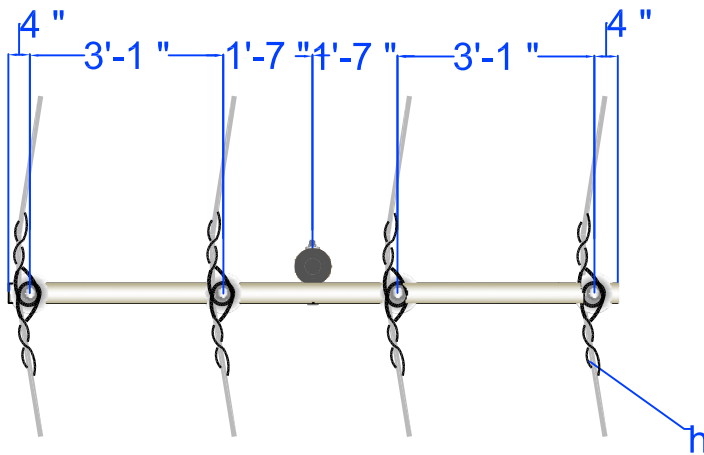
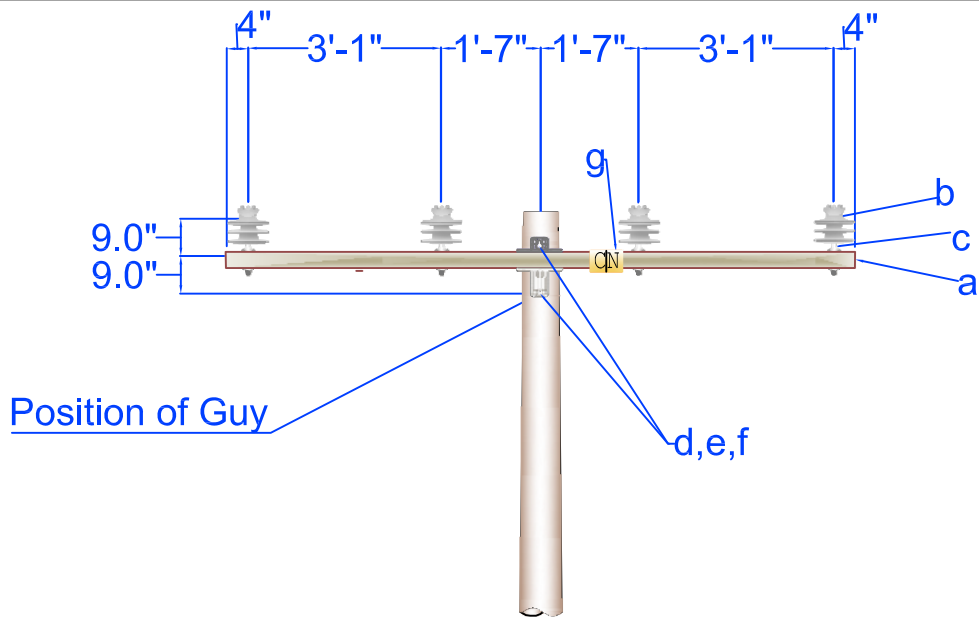


PEDERNALES ELECTRIC
COOPERATIVE, INC.
CONSTRUCTION ASSEMBLY UNIT

**3Φ Double Support Tangent or Small Angle,
Crossarm Construction, with the Neutral on the arms**

drawn:	approved	date:
REB	MJB	October 22, 2015

C9/C9N



Note:

1. If this unit is used as part of a double circuit structure, allow six feet between the upper and lower circuits.

Note: See design guidelines for additional information

Item	Material Number	Item Quantity	Item Description	Item	Material Number	Item Quantity	Item Description
a	2001324	1	Xarm Fbgls 10'	e	*3000151	2	Locknut 3/4" M F
b	2000541	4 (3)	Insulator Pin Type CI 55-7	f	*3000230	2	Washer SQ F 21/2x21/2 13/16H
c	2000626	4(3)	Pin Xarm 1 3/8" Thd Reg	g	*	1	Letters C and N
d	*	2	Bolt Machine 3/4"	h	*	As Required	Primary and Neutral Ties

Specify C9-1N for unit C9-1 less neutral material. Quantities shown in parenthesis are for C9-1N.

* Denotes "Grab Bag" item. Bolt lengths are dependent on pole class.



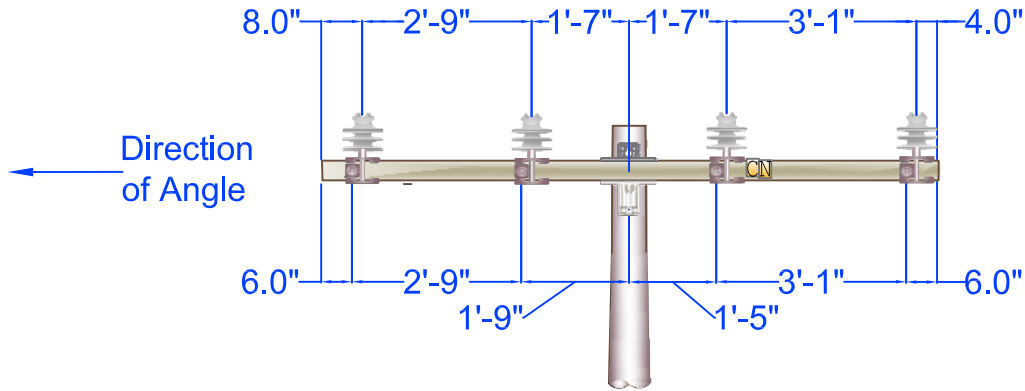
PEDERNALES ELECTRIC
COOPERATIVE, INC.
CONSTRUCTION ASSEMBLY UNIT

**3Φ Single Support Tangent or Small Angle,
Crossarm Construction, with the Neutral on the Arm**

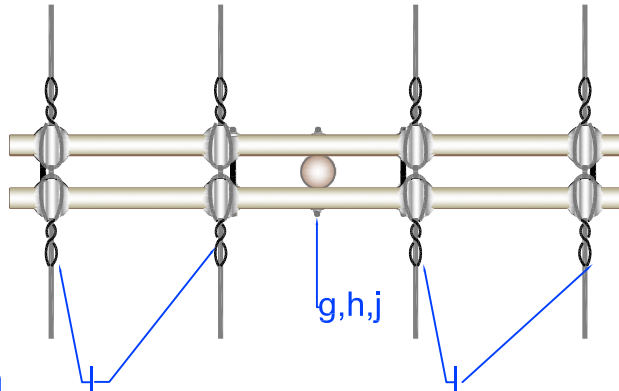
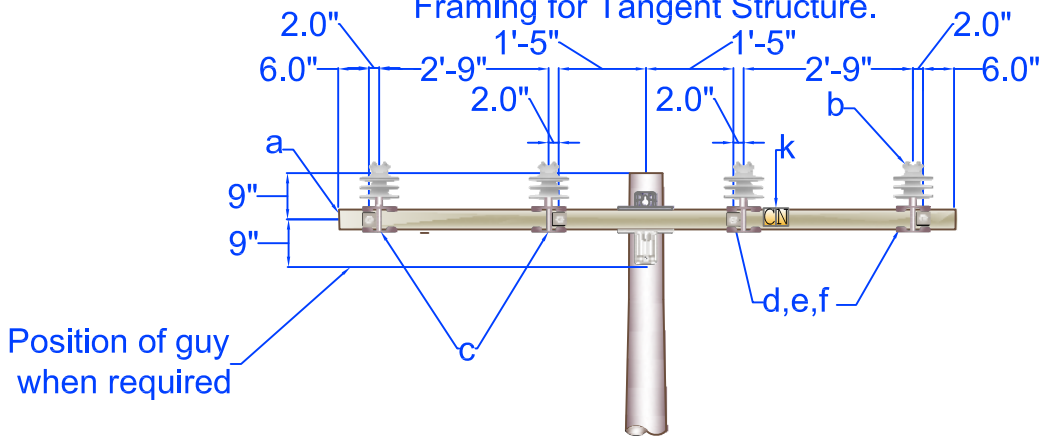
drawn:	approved	date:
REB	MJB	October 22, 2015

C9-1/C9-1N

Framing for Angle Structure.



Framing for Tangent Structure.



Top View

Note:

1. If this unit is used on an angle, install a split bolt.

Item	Material Number	Item Quantity	Item Description	Item	Material Number	Item Quantity	Item Description
a	2001324	2	Xarm Fbgl 10'	g	*	2	Bolt Dbl Arming 3/4"
b	2000541	8 (6)	Insulator Pin Type CI 55-7	h	*3000151	4	Locknut 3/4" M F
c	2000625	8 (6)	Pin Xarm 1 3/8" Thd Clamp Type	j	*3000230	4	Washer SQ F 21/2x21/2 13/16H
d	*	4	Bolt Dbl Arming 5/8"	k	*	2	Letters C and N
e	*3000153	16	Locknut 5/8" M F	l	*	As Required	Primary and Neutral Ties
f	*3000240	16	Washer Sq F 2 1/4				

Specify C9-2N for unit C9-2 less neutral material. Quantities shown in parenthesis are for C9-2N

* Denotes "Grab Bag" item. Bolt lengths are dependent on pole class.

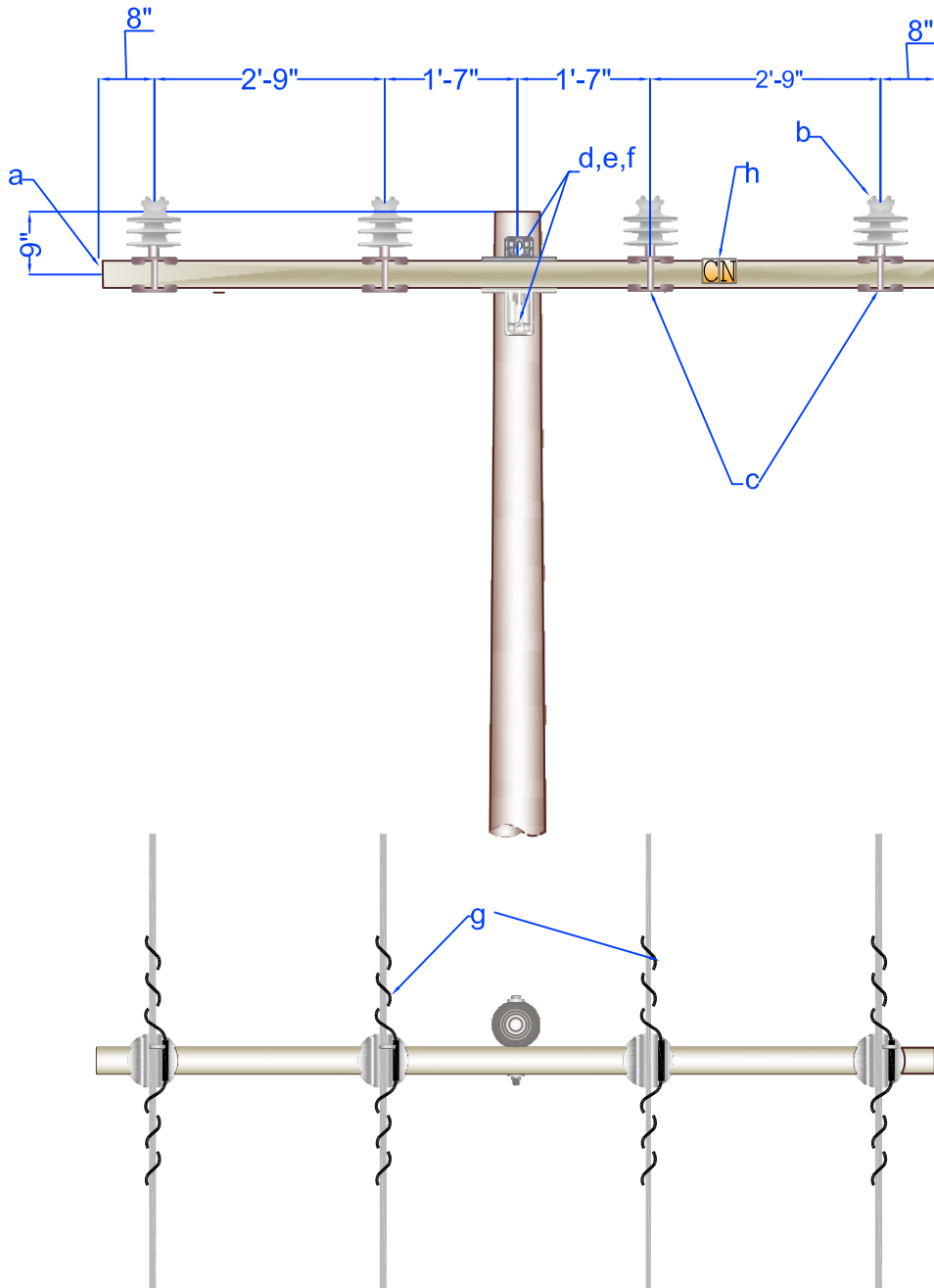


PEDERNALES ELECTRIC
COOPERATIVE, INC.
CONSTRUCTION ASSEMBLY UNIT

**3Φ Double Support Tangent or Small Angle,
Crossarm Construction, with the Neutral on
the Arms using Saddle Pins**

drawn: REB	approved MJB	date: October 22, 2015
----------------------	------------------------	---------------------------

C9-2/C9-2N



Item	Material Number	Item Quantity	Item Description	Item	Material Number	Item Quantity	Item Description
a	2001324	1	Xarm Fbgl 10'	e	*3000230	2	Washer SQ F 21/2x21/2 13/16H
b	2000541	4 (3)	Insulator Pin Type CI 55-7	f	*3000151	2	Locknut 3/4" M F
c	2000625	4 (3)	Pin Xarm 1 3/8" Thd Clamp Type	g	*	As Required	Primary and Neutral Ties
d	*	2	Bolt Machine 3/4"	h	*	2 (0)	Letters C & N

Specify C9-3N for unit C9-3 less neutral material. Quantities shown in parenthesis are for C9-3N

* Denotes "Grab Bag" item. Bolt lengths are dependent on pole class.

3Φ Single Support Tangent or Small Angle,
Crossarm Construction, with the Neutral on the Arm
using Saddle Pins



PEDERNALES ELECTRIC
COOPERATIVE, INC.
CONSTRUCTION ASSEMBLY UNIT

drawn: REB	approved MJB	date: October 22, 2015
----------------------	------------------------	---------------------------

C9-3/C9-3N