

RECLOSER/FUSE COORDINATION TABLE

RECLOSER (AMPS)	MAXIMUM DOWNLINE FUSE "200N" (AMPS)	MINIMUM DOWNLINE FUSE "200N" (AMPS)	BYPASS FUSE "200N" (AMPS)
10	5	N/A	15
25	10	7	30
35	15	10	40
50	20	15	65
70	30	25	80
100	40	30	125
100 VERSA TECH	20	15	65
140 VERSA TECH	30	25	80
200 VERSA TECH	40	30	125
280 VERSA TECH	40	30	150
320 VERSA TECH	50	40	175
360 VERSA TECH	50	40	175
380 VERSA TECH	50	40	175
400 VERSA TECH	50	40	175
500 VERSA TECH	50	40	175
140 - WV W/156 GRD. TRIP	50	40	150
160 - WV W/156 GRD. TRIP	50	40	175
185 - WV W/156 GRD. TRIP	50	40	200
225 - WV W/156 GRD. TRIP	50	40	SBD
250 SCADA CONTROL	40	30	SBD
400 SCADA CONTROL	50	40	SBD
500 SCADA CONTROL	50	40	SBD
600 SCADA CONTROL	50	40	SBD

MVI (AMPS)	MAXIMUM DOWNLINE FUSE SMU E STANDARD SPEED
30	10
40	13
50	15
70	25
90	30
120	40
150	50
200	65
250	80
350	100
450	150
600	200

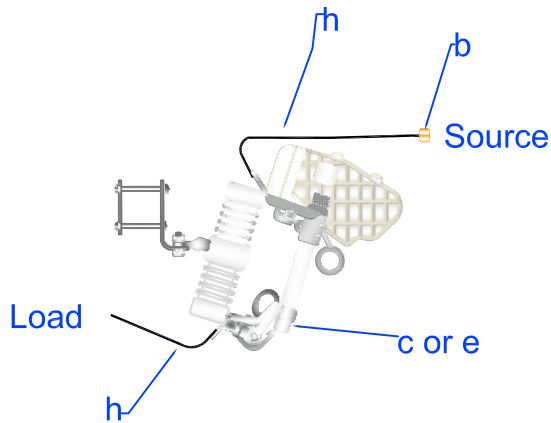
REV | A | DATE | 05/18/2020 | REVISION | ISSUE FOR CONSTRUCTION | BY | RWC | CHK | MMG | APR | MMG



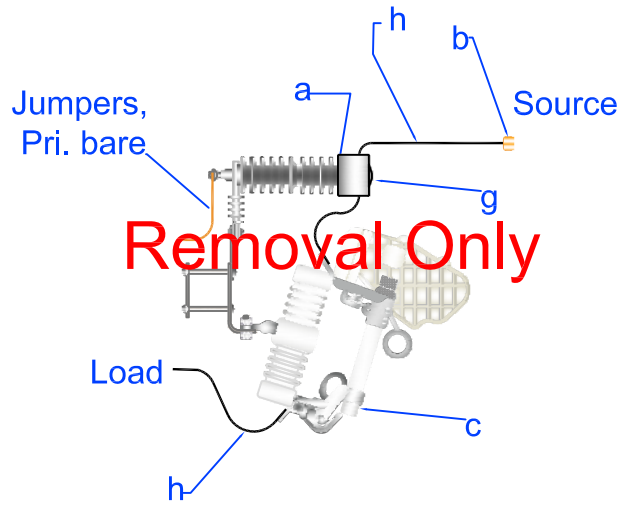
**PEDERNALES ELECTRIC
COOPERATIVE, INC.**

DOWNLINE FUSE COORDINATION CHART

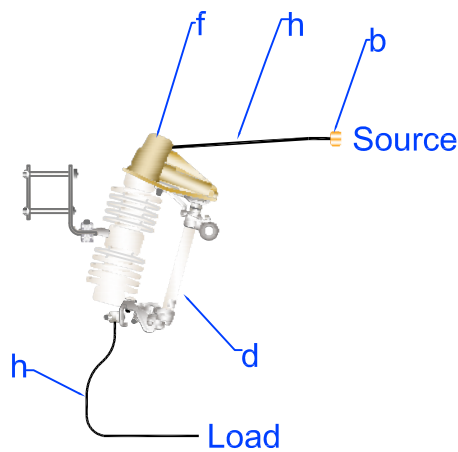
drawn:	approved:	date:	M3 FUSE
RWC	MMG	05/18/2020	



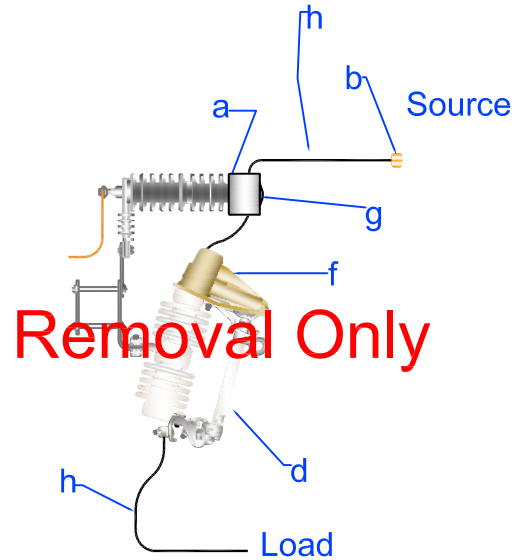
M3-1.1 and M3-1.2



M3-2.1



M3-1



M3-2

Item	Material Number	Item Description	M3-1	M3-1.1	M3-1.2	M3-2	M3-2.1
a	2000014	Arrester Dist 18KV MOV				1	1
b	2000278	Conn HL Gp 8-2/0-8-1/0	1	1	1	1	1
c	2000425	Cutout 24.9KV 100A W/LB		1			1
d	2000423	Cutout 14.4-24.9 100A	1			1	
e	2000426	Cutout 24.9KV 200A W/LB			1		
f	2000496	Guard Fused Cutout	1			1	
g	2000495	Guard Bird, Arrester				1	1
h	*	Jumpers	As Req'd	As Req'd	As Req'd	As Req'd	As Req'd

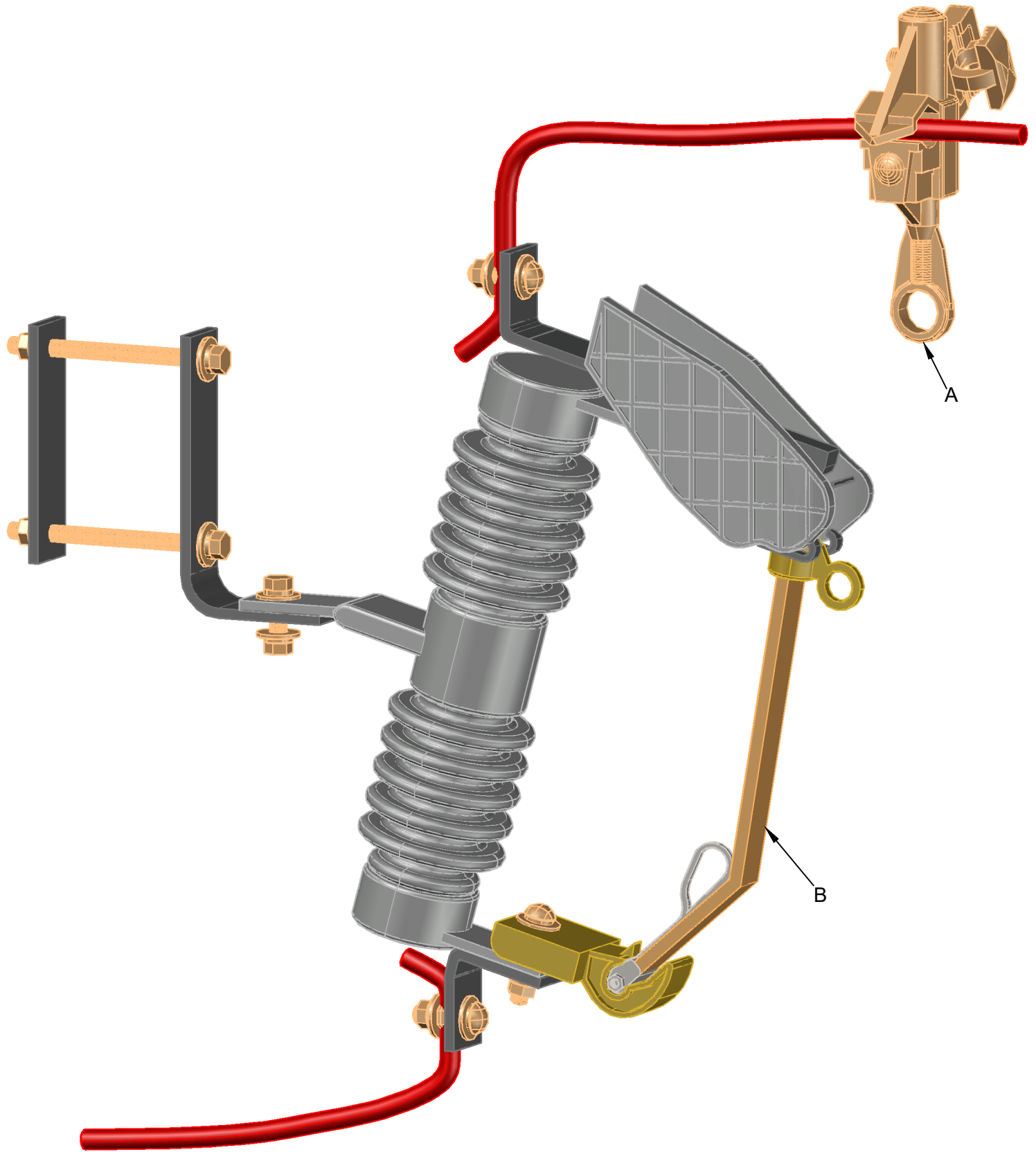
*Denotes "Grab Bag" item.



PEDERNALES ELECTRIC
COOPERATIVE, INC.
CONSTRUCTION ASSEMBLY UNIT

Cutouts

drawn: REB	approved MJB	date: April 9, 2014	M3-1, M3-1.1, M3-1.2 M3-2, and M3-2.1
----------------------	------------------------	------------------------	--



ITEM	MATERIAL NUMBER	DESCRIPTION	QTY
A	2000278	CONNECTOR HL GP 8-2/0 8-1/0	1
B	2000424	CUTOUT 14.4 - 24.9 kV SOLID BLADE	1

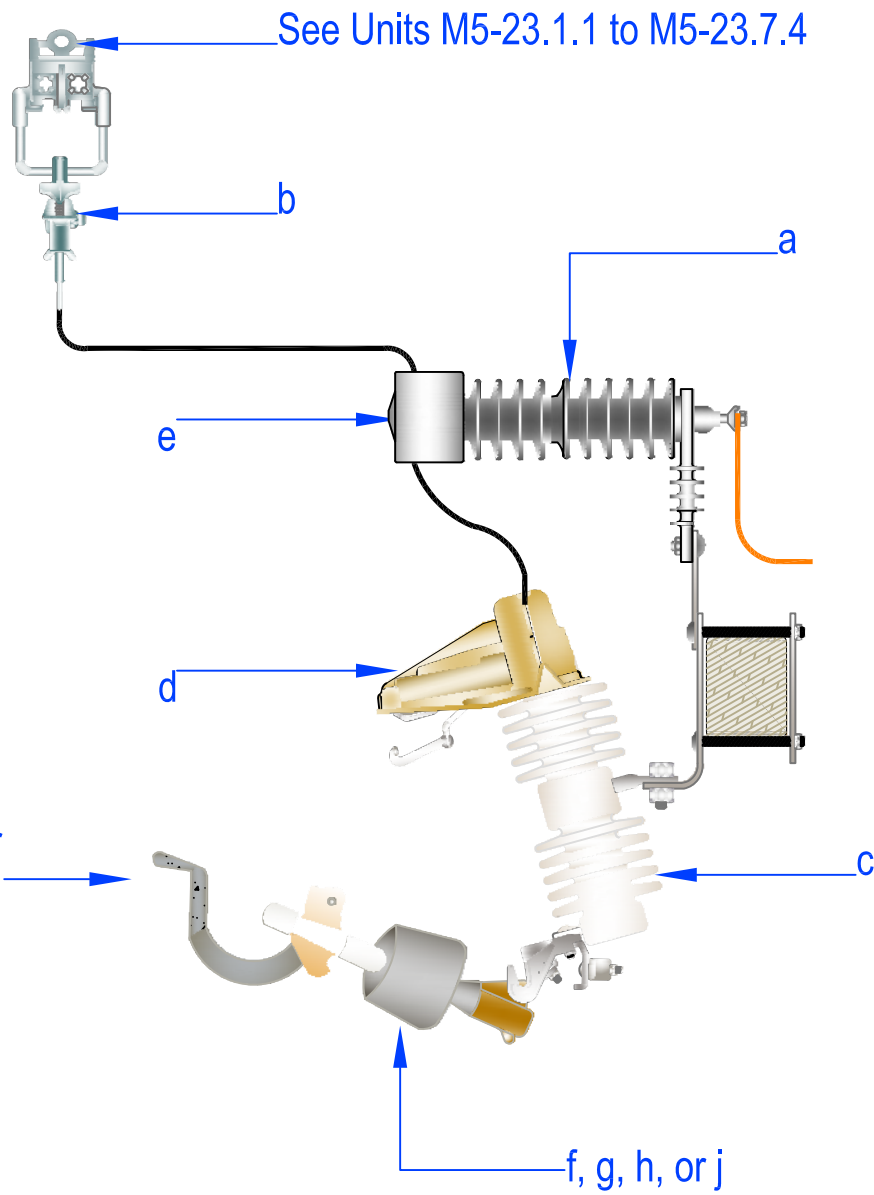
REV | A | DATE | 12/03/2021 | REVISION | ISSUE FOR CONSTRUCTION | BY | RWC | CHK | SSS | APR | MMG



CONSTRUCTION
ASSEMBLY UNIT

300A SOLID BLADE LB CUTOUT

drawn:	approved:	date:	M3-1.SB
RWC	MMG	12/03/2021	



Item	Material Number	Item Description	M3-3.24	M3-3.40	M3-3.56	M3-3.80
a	2000014	Arrester Dist 18KV MOV	1	1	1	1
b	2000278	Conn HL Gp 8-2/0-8-1/0	1	1	1	1
c	2000423	Cutout 14.4-24.9 100A	1	1	1	1
d	2000496	Guard Fused Cutout Cover	1	1	1	1
e	2000495	Guard Bird, Arrester	1	1	1	1
f	2000850	Sectionlizr Cutout 27kV 24A 3CT	1			
g	2000851	Sectionlizr Cutout 27kV 40A 3CT		1		
h	2000852	Sectionlizr Cutout 27kV 56A 3CT			1	
j	2000854	Sectionlizr Cutout 27kV 80A 3CT				1
l	*	Jumpers	As req'd			
m	*	Connectors	As req'd			

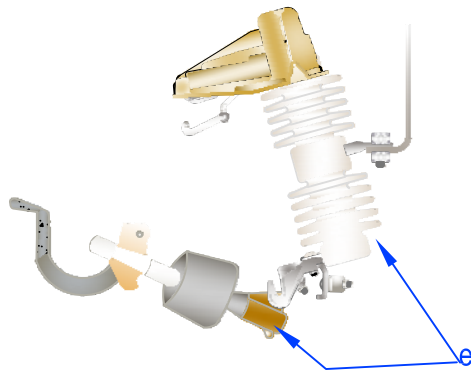
*Denotes "Grab Bag" Item. Specify M3-3.24.5, M3-3.40.5, M3-3.56.5, and M3-3.80.5 for ABB Sectionalizer Only.



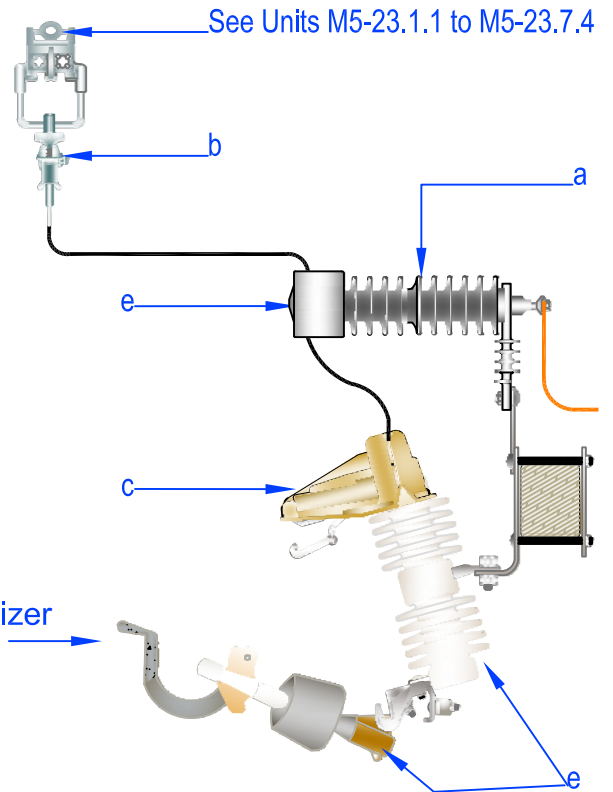
PEDERNALES ELECTRIC
COOPERATIVE, INC.
CONSTRUCTION ASSEMBLY UNIT

Sectionalizing Loadbreak Cutout and Arrester

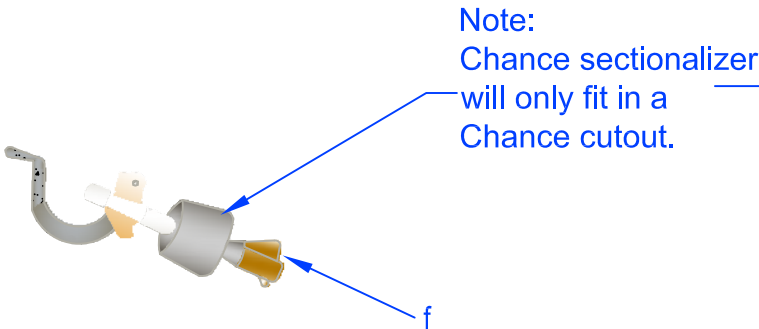
drawn: JBS	approved MJB	date: April 2, 2012	M3-3.24 to M3-3.80



M3-5.1



M3-5



M3-5.2

Note:
Chance sectionalizer
will only fit in a
Chance cutout.

Item	Material Number	Item Description	M3-5	M3-5.1	M3-5.2
a	2000014	Arrester Dist 18KV MOV	1		
b	2000278	Conn HL Gp 8-2/0-8-1/0	1		
c	2000496	Guard Fused Cutout Cover	1		
d	2000495	Guard Bird, Arrester	1		
e	2000849	Sectionlizr LB Prog Dry Type with Cutout	1	1	
f	2001491	Sect Lb Prog Dry Type Module Only			1
g	*	Jumpers	As req'd	As req'd	
h	*	Connectors	As req'd	As req'd	

*Denotes "Grab Bag" Item.



PEDERNALES ELECTRIC
COOPERATIVE, INC.
CONSTRUCTION ASSEMBLY UNIT

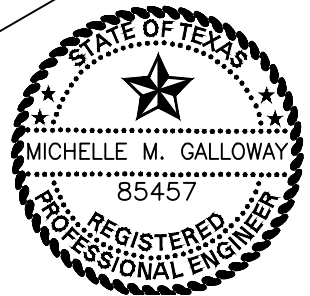
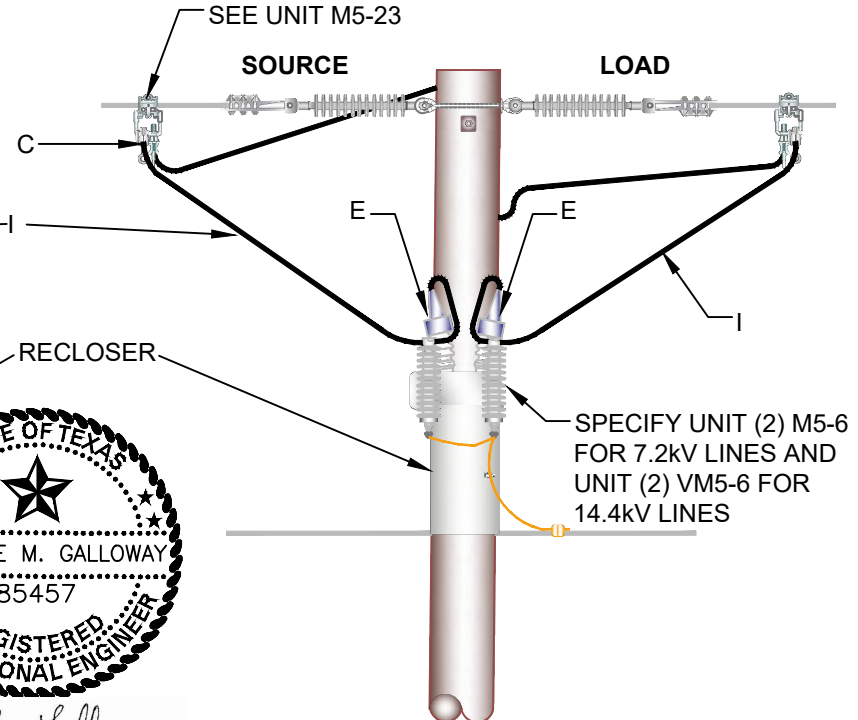
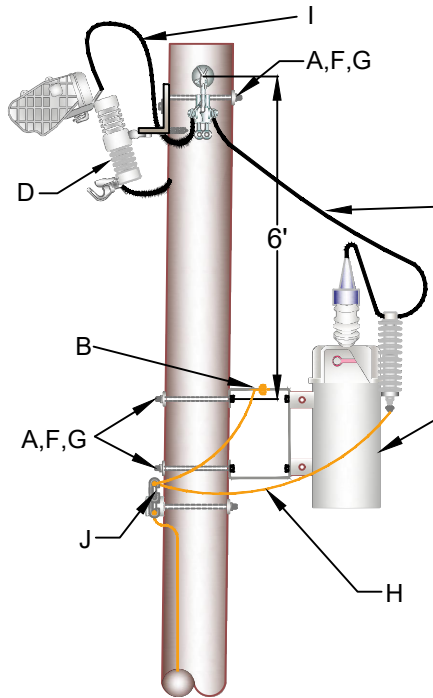
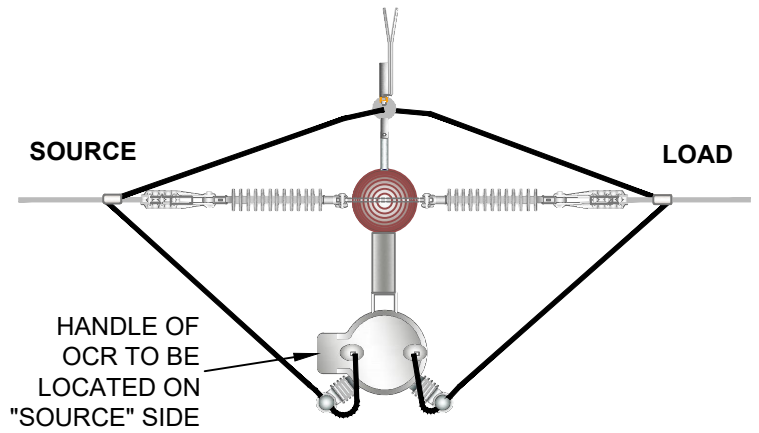
**Programmable Sectionalizing
Loadbreak Cutout and Arrester**

drawn: JBS	approved MJB	date: April 2, 2012
---------------	-----------------	------------------------

M3-5 to M3-5.2

NOTES:

- CUTOUT TO BE OPEN AND FUSE BARREL REMOVED AND HUNG ON THE POLE WHEN RECLOSER IS ENERGIZED.
- DO NOT MAKE TERMINATIONS ON ARMOR RODS.
- THE TERMINAL BUSHING CONNECTED DIRECTLY TO THE COIL SHOULD BE CONNECTED TO THE SOURCE. WHERE NECESSARY TO PROVIDE FOR THIS CONNECTION THE RECLOSER MAY BE MOUNTED ON THE OTHER SIDE OF THE POLE AND THE NEUTRAL DEAD ENDED.



Michelle Galloway
11/01/2018

ITEM	MATERIAL NUMBER	DESCRIPTION	M3-10
A	*	BOLT MACHINE 5/8"	4
B	2000161	BRACKET POLE MOUNT OCR 9"	1
C	2000278	CONN HL GP 8-2/0 8-1/0	4
D	2000426	CUTOUT 24.9kV 200A W/LB	1
E	2000494	GUARD BIRD LG	2
F	*3000153	LOCKNUT 5/8" MF	4
G	*3000240	WASHER SQUARE F 2 1/4"	4
H	*2001550	WIRE COPPER CLAD STEEL #6 SOLID	AS REQ'D
I	*	JUMPERS	AS REQ'D
J	*	CONNECTORS	AS REQ'D

*DENOTES "GRAB BAG" ITEM ALL BOLT LENGTHS DEPEND ON POLE CLASS.

REV A DATE 11/01/2018 REVISION ISSUE FOR CONSTRUCTION BY RWC CHK APR



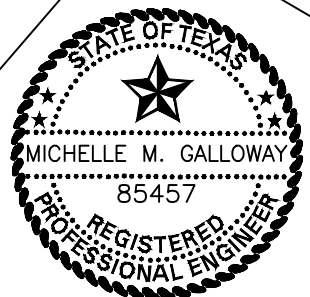
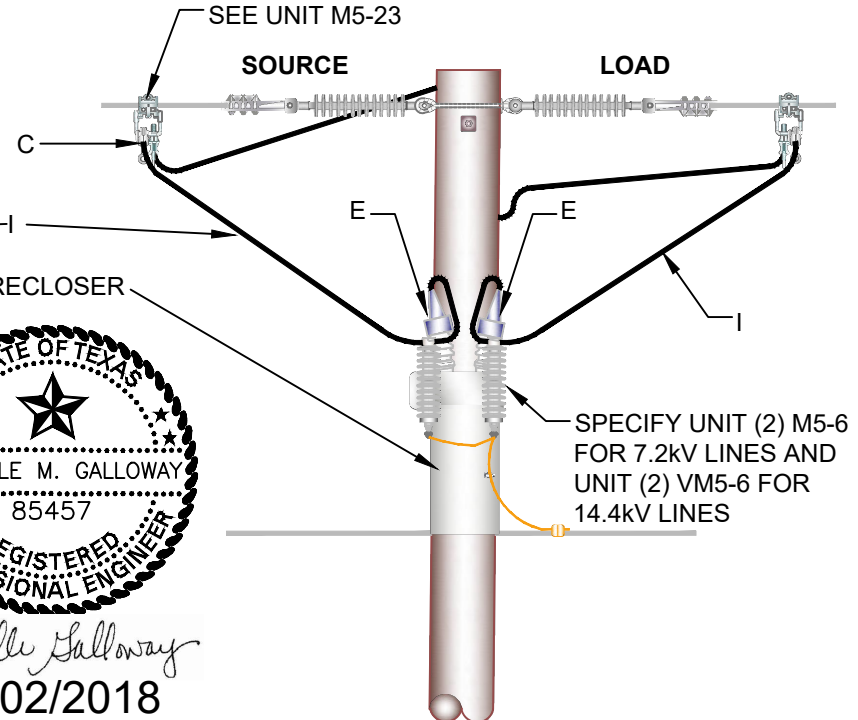
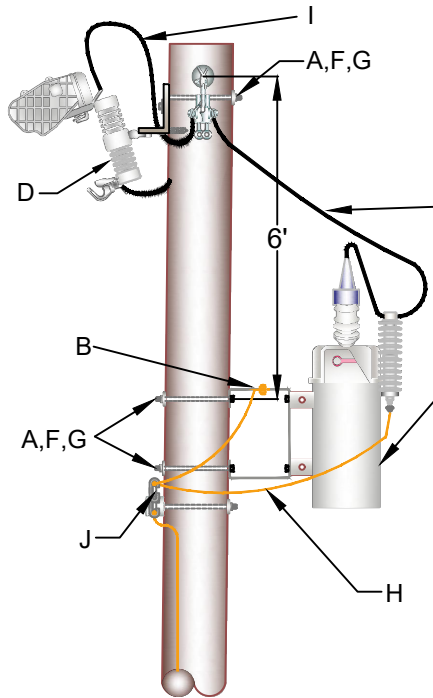
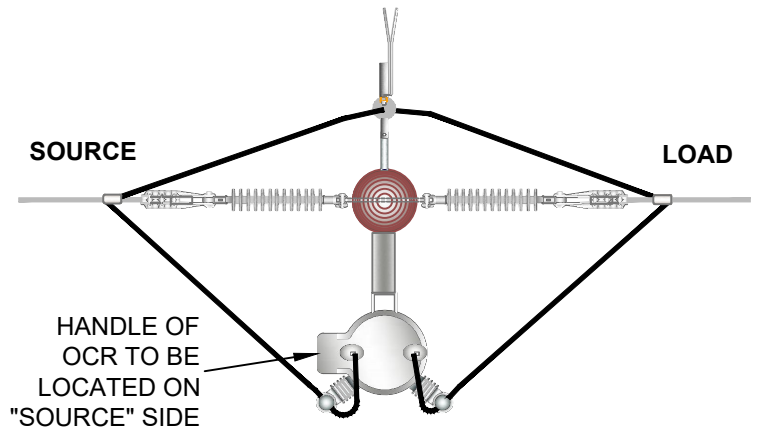
**CONSTRUCTION
ASSEMBLY UNIT**

**SINGLE OCR WITH FUSED CUTOUT
AND BYPASS, SOURCE AND LOAD
SIDE MOV LIGHTNING ARRESTERS**

drawn: RWC	approved: MMG	date: 11/01/2018	M3-10
---------------	------------------	---------------------	--------------

NOTES:

- CUTOUT TO BE OPEN AND FUSE BARREL REMOVED AND HUNG ON THE POLE WHEN RECLOSER IS ENERGIZED.
- DO NOT MAKE TERMINATIONS ON ARMOR RODS.
- THE TERMINAL BUSHING CONNECTED DIRECTLY TO THE COIL SHOULD BE CONNECTED TO THE SOURCE. WHERE NECESSARY TO PROVIDE FOR THIS CONNECTION THE RECLOSER MAY BE MOUNTED ON THE OTHER SIDE OF THE POLE AND THE NEUTRAL DEAD ENDED.



Michelle Galloway
11/02/2018

FOR REMOVAL ONLY

ITEM	MATERIAL NUMBER	DESCRIPTION	M3-10.1
A	*	BOLT MACHINE 5/8"	4
B	2000163	BRACKET POLE MOUNT OCR L	1
C	2000278	CONN HL GP 8-2/0 8-1/0	2
D	2000426	CUTOUT 24.9kV 200A W/LB	1
E	2000494	GUARD BIRD LG	2
F	*3000153	LOCKNUT 5/8" MF	4
G	*3000240	WASHER SQUARE F 2 1/4"	4
H	*2001550	WIRE COPPER CLAD STEEL #6 SOLID	AS REQ'D
I	*	JUMPERS	AS REQ'D
J	*	CONNECTORS	AS REQ'D

*DENOTES "GRAB BAG" ITEM ALL BOLT LENGTHS DEPEND ON POLE CLASS.

REV	A	DATE	11/02/2018	REVISION	ISSUE FOR CONSTRUCTION	BY	RWC	CHK	APR
-----	---	------	------------	----------	------------------------	----	-----	-----	-----



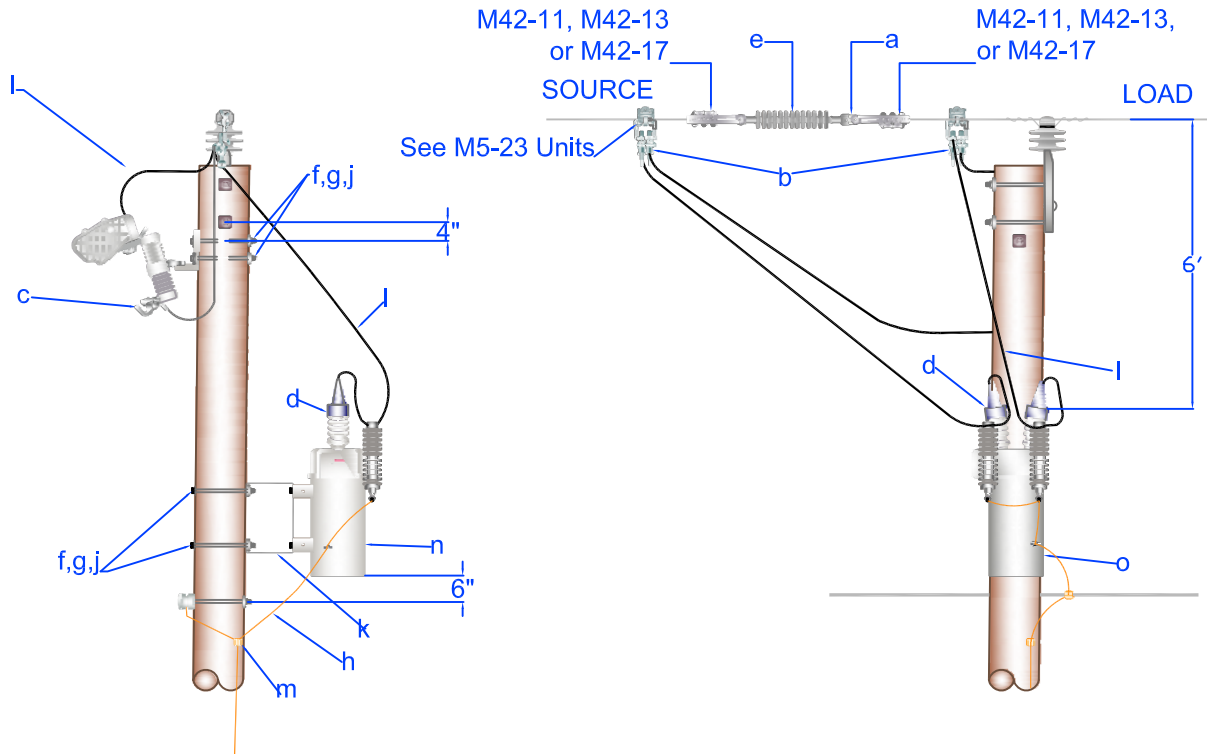
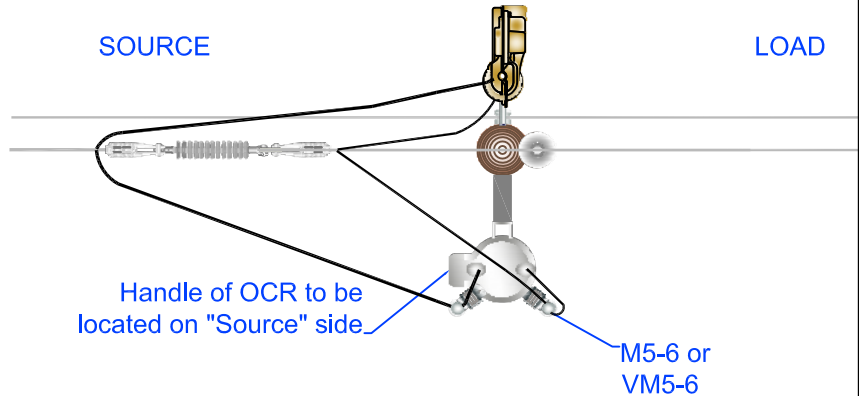
**CONSTRUCTION
ASSEMBLY UNIT**

**SINGLE OCR WITH FUSED CUTOUT
AND BYPASS, SOURCE AND LOAD
SIDE MOV LIGHTNING ARRESTERS**

drawn:	approved:	date:	M3-10.1
RWC	MMG	11/02/2018	

Notes:

- 1) Use 2-M5-6 for 10KV installations or 2-VM5-6 for 18 KV installations.
- 2) Cutout to be open and fuse barrel removed and hung on the pole when recloser is energized.
- 3) Do not make terminations on armor rods.
- 4) The terminal bushing connected directly to the coil should be connected to the source. Where necessary to provide for this connection the recloser may be mounted on the other side of the pole and the neutral deadended if necessary.
- 5) Recloser lid bolts may be loosened in order for bushings and handle to be rotated toward source.



	Material Number	Item Quantity	Item Description	Item	Material Number	Item Quantity	Item Description
a	2000262	1	Clevis Anchor Shackle Sml	h	*2001550	As Req'd	Wire Copper Clad Steel #6 Solid
b	2000278	4	Conn HI Gp 8-2/0-8-1/0	j	*	4	Bolt Machine 5/8"
c	2000426	1	Cutout 24.9KV 200A w/LB	k	2000161	1	Bracket Pole Mount OCR 9"
d	2000494	2	Guard Bird Lg	l	*	As Req'd	Jumpers
e	2000551	1	Insulator Susp Poly 35KV Cl	m	*	As Req'd	Connectors
f	*3000153	4	Locknut 5/8" MF	n		1	Recloser Oil Circuit
g	*3000240	4	Washer Sq F 2 1/4				

*Denotes "Grab Bag" Item. All bolt lengths are dependent on pole class.

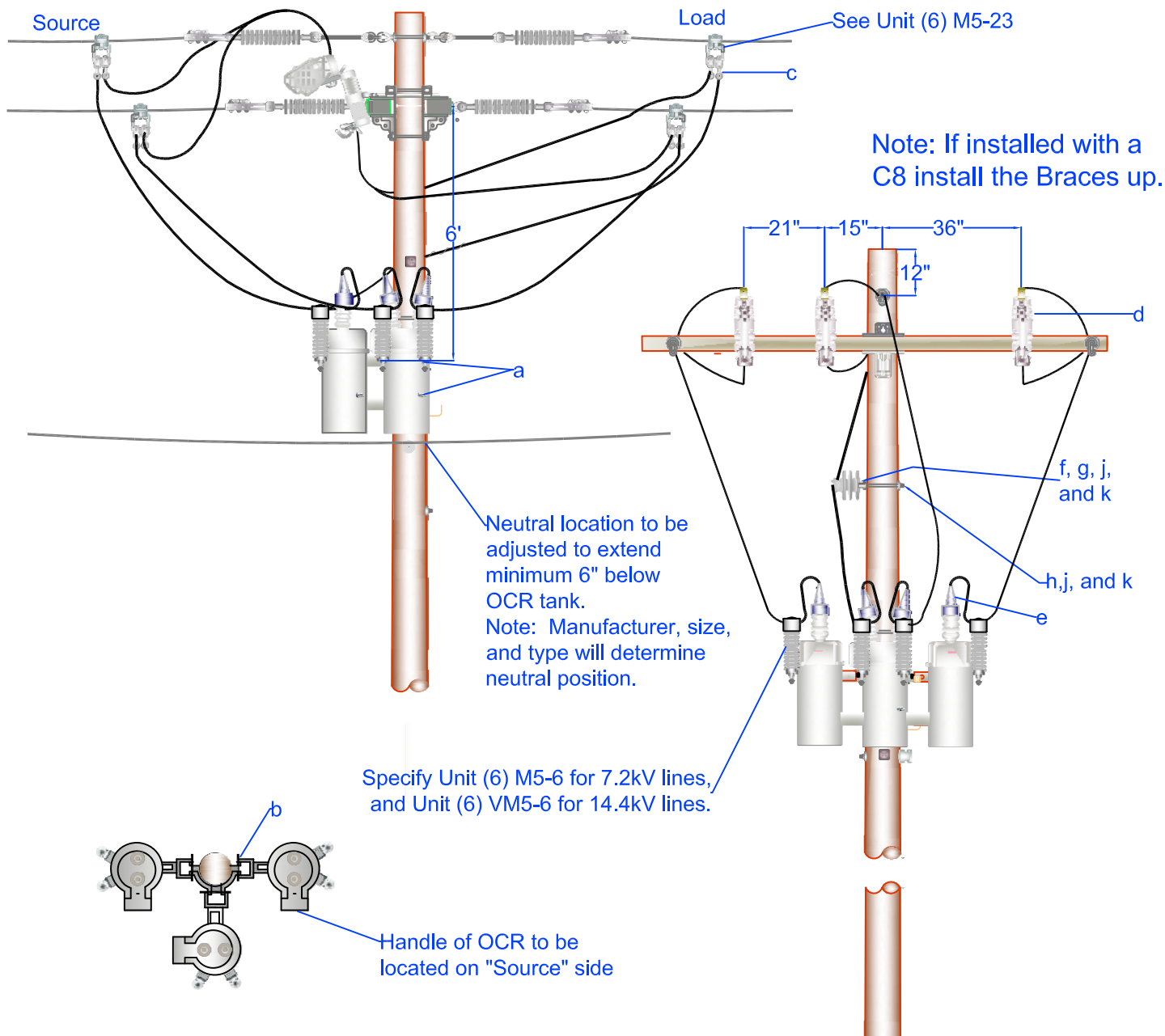


PEDERNALES ELECTRIC
COOPERATIVE, INC.
CONSTRUCTION ASSEMBLY UNIT

Single Oil Circuit Recloser with Fused Cutout Bypass and
Source and Load Side MOV Lightning Arresters and
Floating Dead End

drawn:	approved	date:
REB	MJB	October 16, 2013

M3-10D



Item	Material Number	Item Quantity	Item Description	Item	Material Number	Item Quantity	Item Description
a	*	2	Bolt Machine 5/8"	h	*	1	Bolt Dbl Arming 5/8"
b	2000158	1	Bracket Mt Trans 3Ph Wing Type	j	*3000153	4	Locknut 5/8" M F
c	2000278	6	Conn HL Gp 8-2/0-8-1/0	k	*3000240	4	Washer Sq F 2 1/4
d	2000426	3	Cutout 24.9KV 200A w/LB	l	*2001550	As req'd	Wire Copper Clad Steel #6 Solid
e	2000494	6	Guard Bird Lg	m	*	As req'd	Jumpers
f	2000001	1	Adapter Insulator 1 3/8"	n	*	As req'd	Connectors
g	2000541	1	Insulator Pin Type CI 55-6				

*Denotes "Grab Bag" Item. All bolt lengths are dependent on pole class.

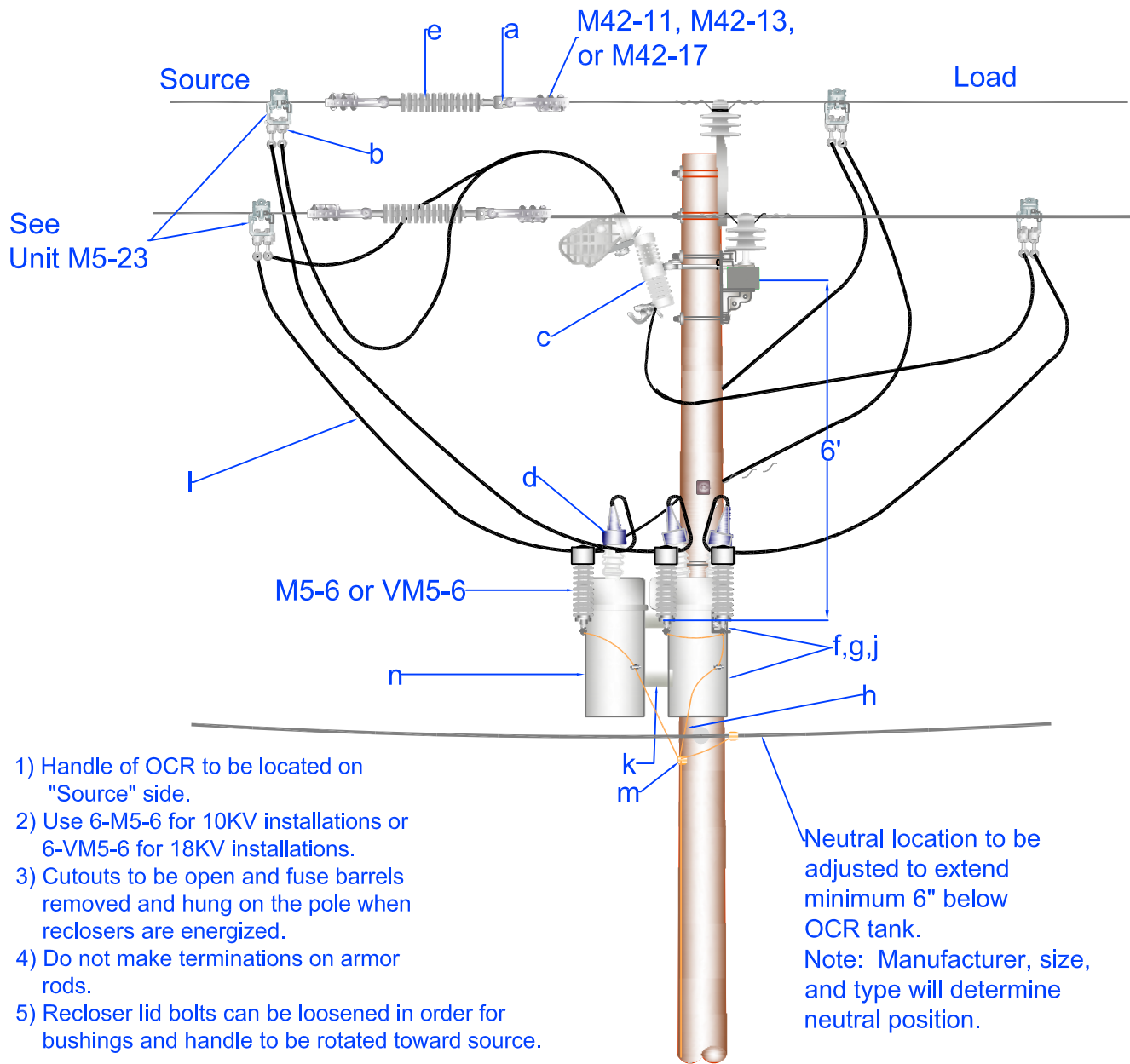


PEDERNALES ELECTRIC
COOPERATIVE, INC.
CONSTRUCTION ASSEMBLY UNIT

**Three OCR's with fused cutout
and bypass and source and
load side MOV lightning arresters**

drawn:	approved	date:
JBS	MJB	October 16, 2013

M3-12



Item	Material Number	Item Quantity	Item Description	Item	Material Number	Item Quantity	Item Description
a	2000262	3	Clevis Anchor Shackle Sml	h	*2001550	As Req'd	Wire Copper Clad Steel #6 Solid
b	2000278	12	Conn HI Gp 8-2/0-8-1/0	j	*	2	Bolt Machine 5/8"
c	2000426	3	Cutout 24.9KV 2100A w/LB	k	2000158	1	Bracket Mt Trans 3Ph Wing Type
d	2000494	6	Guard Bird Lg	l	*	As Req'd	Jumpers
e	2000551	3	Insulator Susp Poly 35KV Cl	m	*	As Req'd	Connectors
f	*3000153	2	Locknut 5/8" MF	n		3	Recloser Oil Circuit
g	*3000240	2	Washer Sq F 2 1/4				

*Denotes "Grab Bag" Item. All bolt lengths are dependent on pole class.

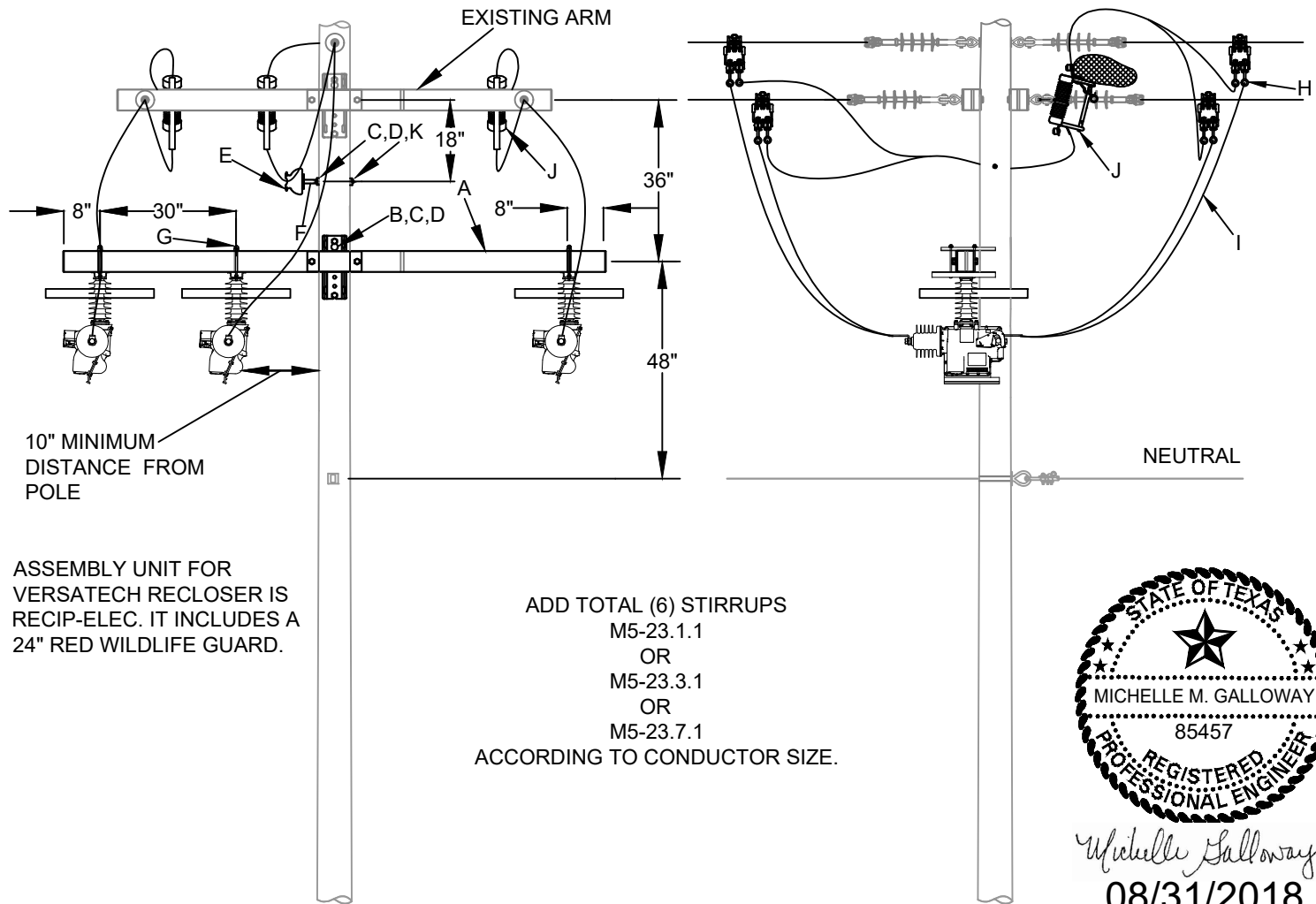


PEDERNALES ELECTRIC
COOPERATIVE, INC.
CONSTRUCTION ASSEMBLY UNIT

**Three OCR's with Fused Cutout Bypass and
Source and Load Side MOV Lightning Arresters
and Floating Dead End**

drawn:	approved	date:
REB	MJB	October 16, 2013

M3-12D



10" MINIMUM
DISTANCE FROM
POLE

ASSEMBLY UNIT FOR
VERSATECH RECLOSER IS
RECIP-ELEC. IT INCLUDES A
24" RED WILDLIFE GUARD.

ADD TOTAL (6) STIRRUPS
M5-23.1.1
OR
M5-23.3.1
OR
M5-23.7.1
ACCORDING TO CONDUCTOR SIZE.



Michelle Galloway
08/31/2018

NOTES:

1. LIGHTNING ARRESTERS ARE NOT REQUIRED FOR VERSATECH RECLOSERS.
2. THIS ASSEMBLY UNIT HAS 200 LOADBREAK CUTOUTS FOR THE BYPASS SWITCHES AND IS INTENDED FOR LOCATIONS THAT HAVE ANTICIPATED LOAD OF 200 AMPS OR LESS.

ITEM	MATERIAL NUMBER	DESCRIPTION	QUANTITY
A	2001324	XARM FIBERGLASS 10' TANGENT	1
B	*	BOLT MACHINE 5/8"	2
C	*3000240	WASHER SQUARE F 2 1/4"	4
D	*3000153	LOCKNUT 5/8" MF	4
E	2000541	INSULATOR PIN TYPE CL 55-7	1
F	2000001	ADAPTER INSULATOR 1 3/8"	1
G	*	UNDER HUNG HARDWARE	3
H	2000278	CONNECTOR HL GP 8-2/0-8-1/0	12
I	*	JUMPERS	AS REQ'D
J	2000426	CUTOUT 24.9kV 200A W/LB	3
K	*	BOLT DOUBLE ARMING 5/8"	1

* DENOTES "GRAB BAG" ITEM - ALL BOLT LENGTHS DEPEND ON POLE CLASS

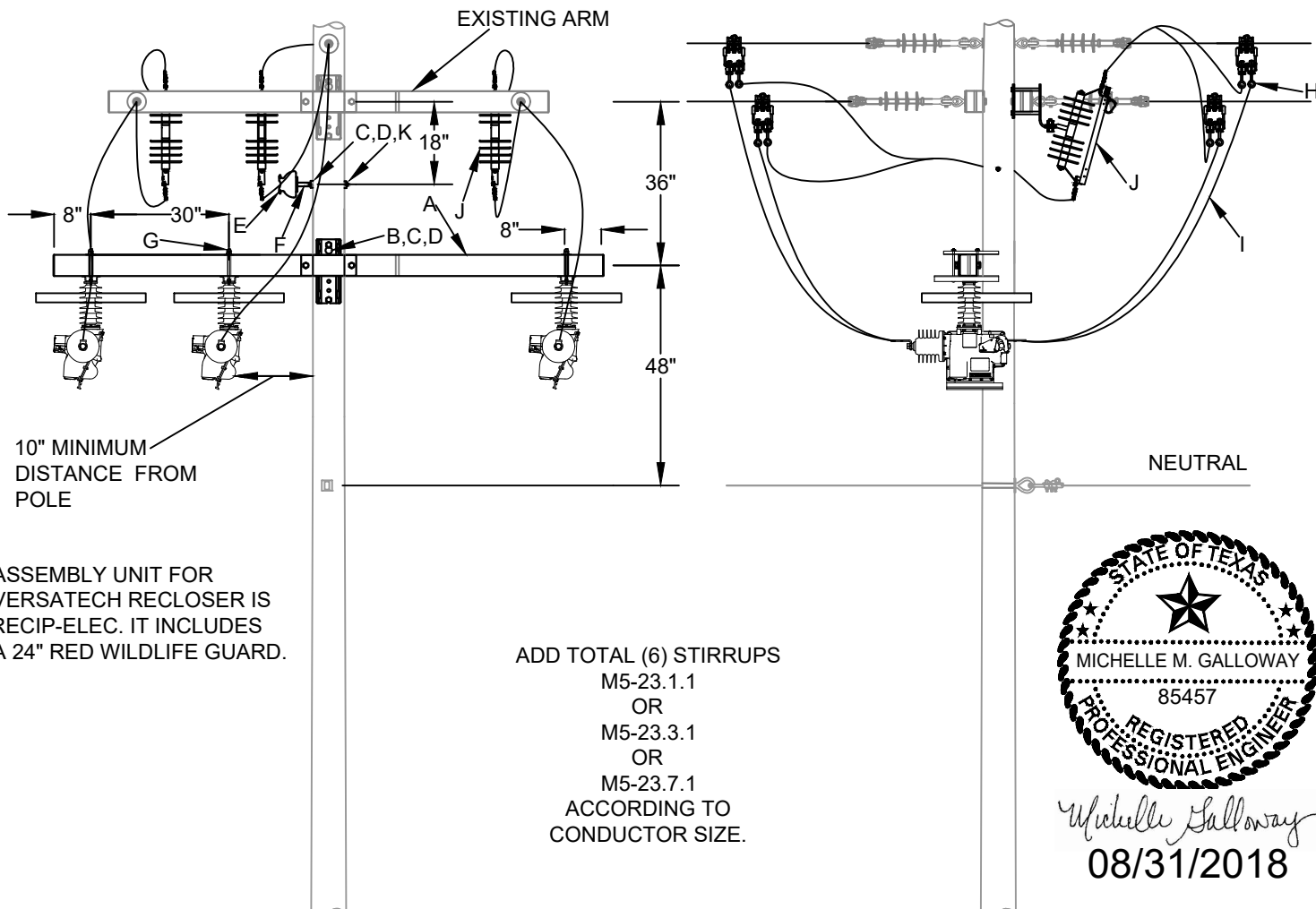
REV | A | DATE | 08/21/2018 | REVISION | ISSUE FOR CONSTRUCTION | BY | RWC | CHK | | APR |



**CONSTRUCTION
ASSEMBLY UNIT**

24.9/14.4kV, THREE PHASE
CIRCUIT RECLOSER
WITH 200A BYPASS SWITCHES

drawn: SE-RZ	approved: MMG	date: 03/23/2018	M3-12-ELEC
-----------------	------------------	---------------------	-------------------



ASSEMBLY UNIT FOR VERSATECH RECLOSER IS RECIP-ELEC. IT INCLUDES A 24" RED WILDLIFE GUARD.

ADD TOTAL (6) STIRRUPS
 M5-23.1.1
 OR
 M5-23.3.1
 OR
 M5-23.7.1
 ACCORDING TO
 CONDUCTOR SIZE.



Michelle Galloway
 08/31/2018

- NOTES:
1. LIGHTNING ARRESTERS ARE NOT REQUIRED FOR VERSATECH RECLOSERS.
 2. THIS ASSEMBLY UNIT HAS 600A DISCONNECT SWITCHES FOR THE BYPASS AND IS INTENDED FOR LOCATIONS THAT HAVE ANTICIPATED LOAD OVER 200 AMPS.

ITEM	MATERIAL NUMBER	DESCRIPTION	QUANTITY
A	2001324	XARM FIBERGLASS 10' TANGENT	1
B	*	BOLT MACHINE 5/8"	2
C	*3000240	WASHER SQUARE F 2 1/4"	4
D	*3000153	LOCKNUT 5/8" MF	4
E	2000541	INSULATOR PIN TYPE CL 55-7	1
F	2000001	ADAPTER INSULATOR 1 3/8"	1
G	*	UNDER HUNG HARDWARE	3
H	2000277	CONNECTOR HL GP 6-400-6-4/0	12
I	*	4/0 CU JUMPERS	AS REQ'D
J	2002687	CUTOUT 24.9kV 600A W/LB	3
K	*	BOLT DOUBLE ARMING 5/8"	1

* DENOTES "GRAB BAG" ITEM - ALL BOLT LENGTHS DEPEND ON POLE CLASS

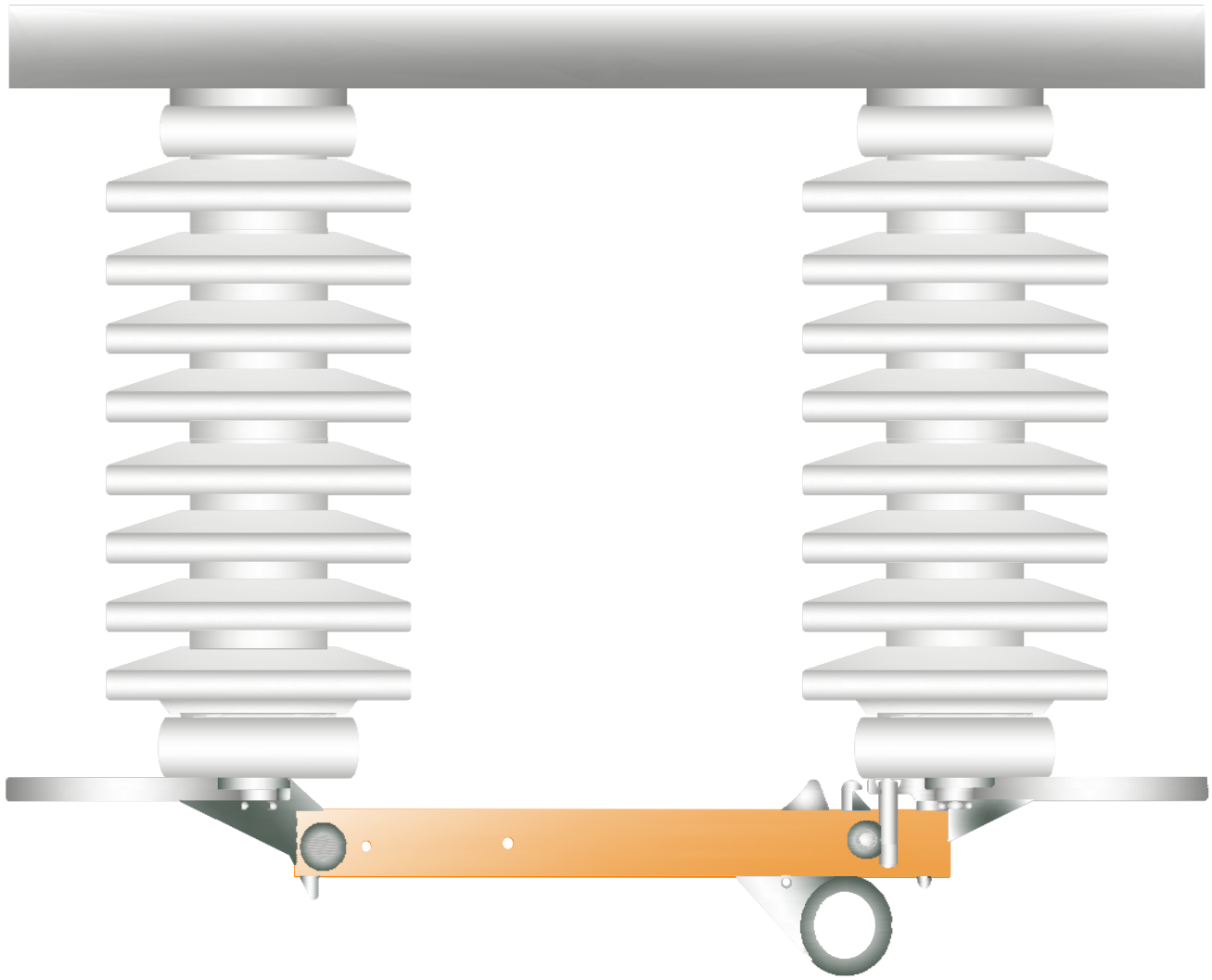
REV	A	DATE	09/28/2018	REVISION	ISSUE FOR CONSTRUCTION	BY	RWC	CHK		APR
-----	---	------	------------	----------	------------------------	----	-----	-----	--	-----



**CONSTRUCTION
 ASSEMBLY UNIT**

24.9/14.4kV, THREE PHASE CIRCUIT
 RECLOSER WITH 600A BYPASS SWITCHES

drawn:	approved:	date:	M3-12.1-ELEC
SE-RZ	MMG	08/02/2018	



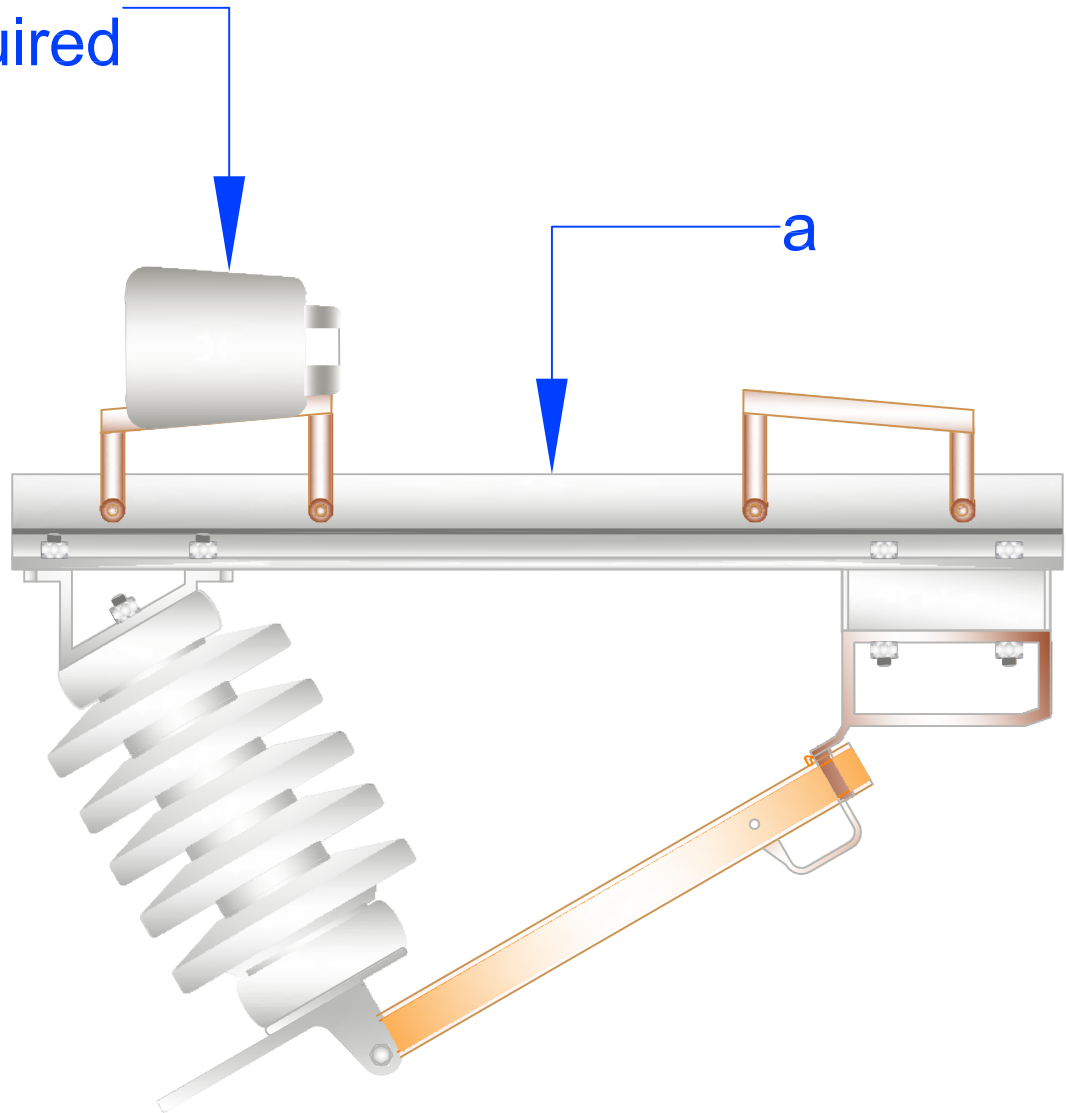
Item	Material Number	Item Description
a	2000930	Switch Disc 25KV 600A



PEDERNALES ELECTRIC
COOPERATIVE, INC.
CONSTRUCTION ASSEMBLY UNIT

Solid Blade Disconnect Switch		
drawn: JBS	approved MJB	date: March 21, 2012
		M3-14

Connectors
As Required



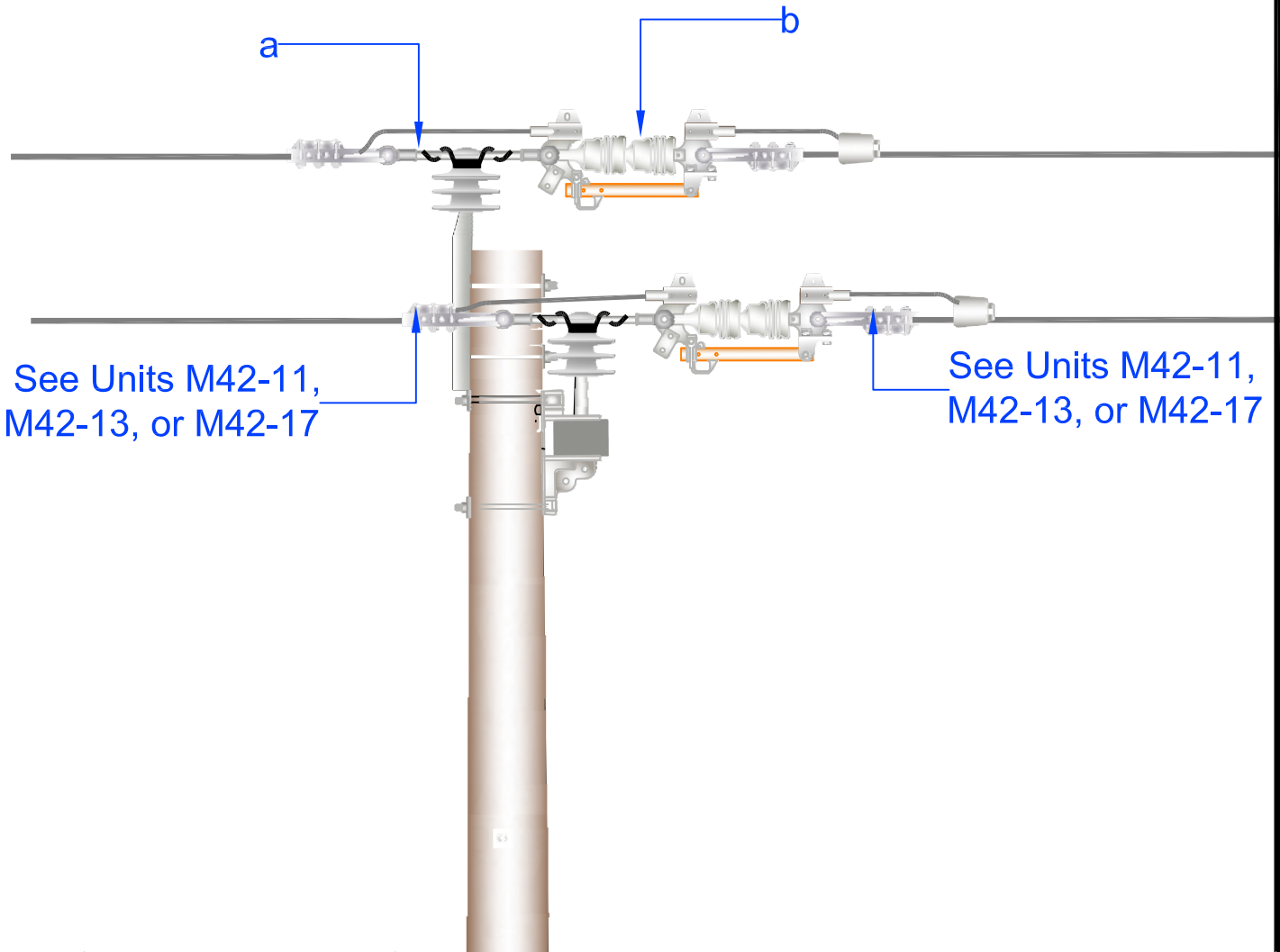
Item	Material Number	Item Description
a	2000936	Switch Disc Solid Blade



PEDERNALES ELECTRIC
COOPERATIVE, INC.
CONSTRUCTION ASSEMBLY UNIT

Line Tap Switch

drawn:	approved	date:	M3-14A
JBS	MJB	March 21, 2012	



See Units M42-11,
M42-13, or M42-17

See Units M42-11,
M42-13, or M42-17

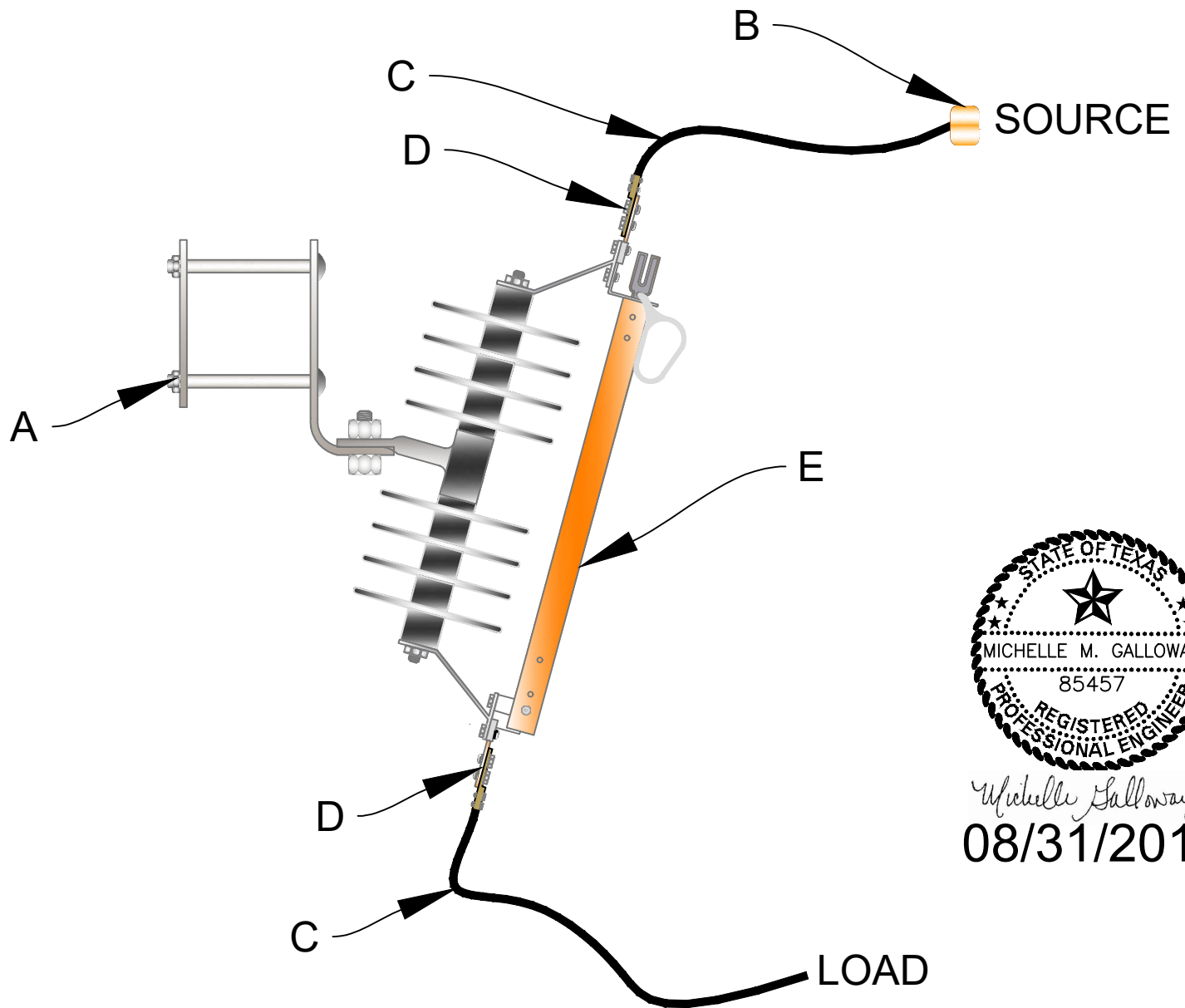
Item	Material Number	Item Description
a	2000934	Switch Disc 25KV Line Tension
b	2000539	Insulator Lnk Ext Fbgl's 12" C-TE



PEDERNALES ELECTRIC
COOPERATIVE, INC.
CONSTRUCTION ASSEMBLY UNIT

Line Tension Switch

drawn:	approved	date:	M3-14B
JBS	MJB	March 21, 2012	



Michelle Galloway
08/31/2018

ITEM	MATERIAL NUMBER	DESCRIPTION	QUANTITY
A	*	MACHINE BOLT 5/8"	4
B	*	CONNECTORS	AS REQ'D.
C	*	JUMPERS	AS REQ'D.
D	*	TWO-HOLE CONNECTORS	AS REQ'D.
E	2002687	SWITCH DISC 600A SINGLE INSULATOR	AS REQ'D.

* DENOTES "GRAB BAG" ITEM - ALL BOLT LENGTHS DEPEND ON POLE CLASS

REV A | DATE 08/15/2018 | REVISION | ISSUE FOR CONSTRUCTION | BY RWC | CHK | APR

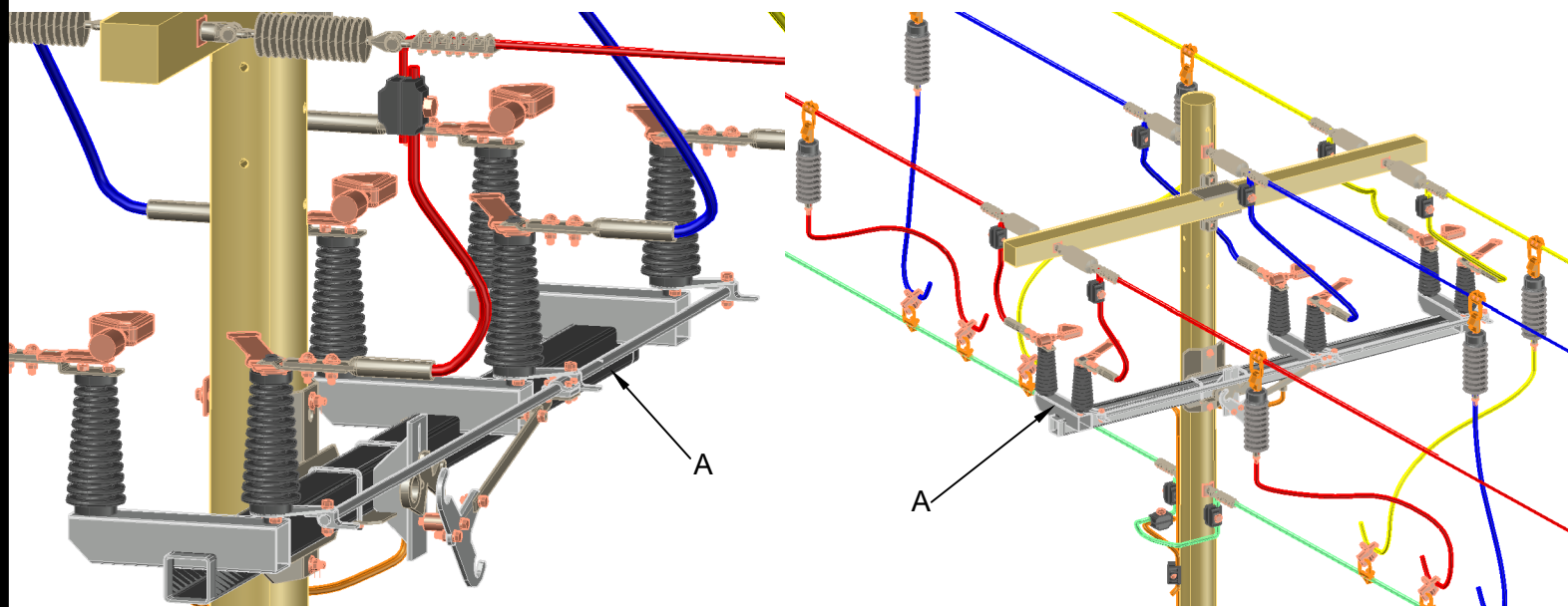
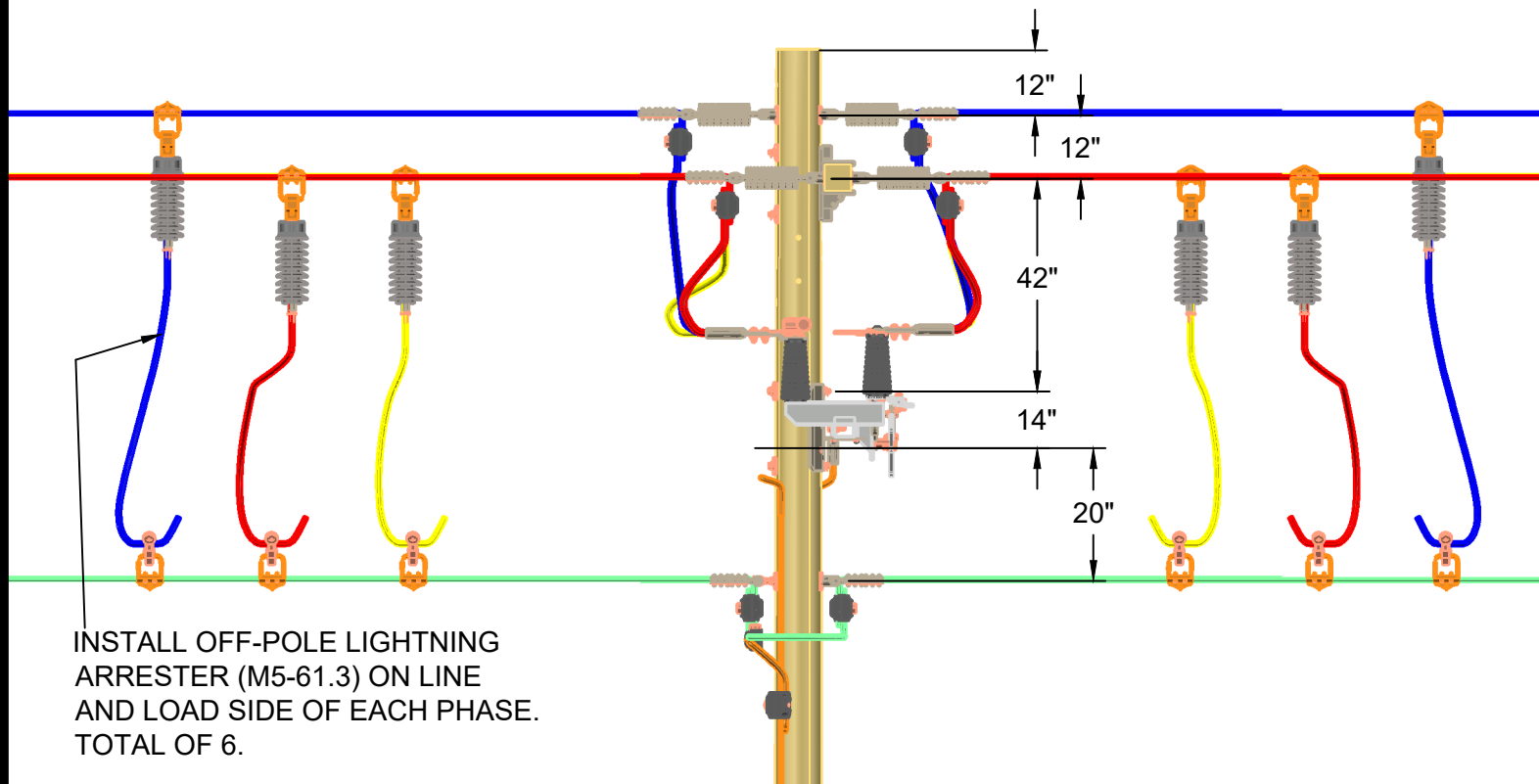


CONSTRUCTION
ASSEMBLY UNIT

600A SINGLE-INSULATOR
DISCONNECT SWITCH

drawn: JDN	approved: MMG	date: 07/09/2018
---------------	------------------	---------------------

M3-14.1



NOTE: USE #6 COPPER MINIMUM FOR GROUND.

ITEM	MATERIAL NUMBER	DESCRIPTION	QUANTITY
A	2002734	SWITCH ABS FBGLS 25 kV 900A	1

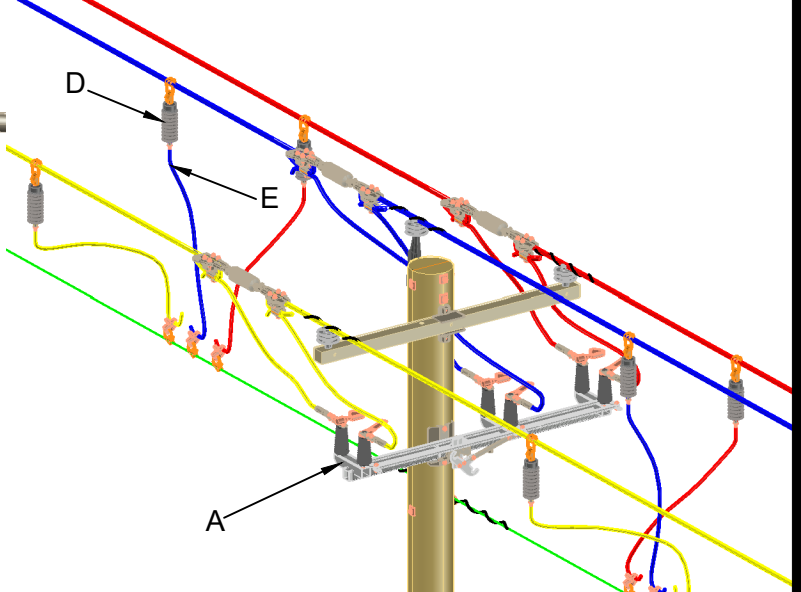
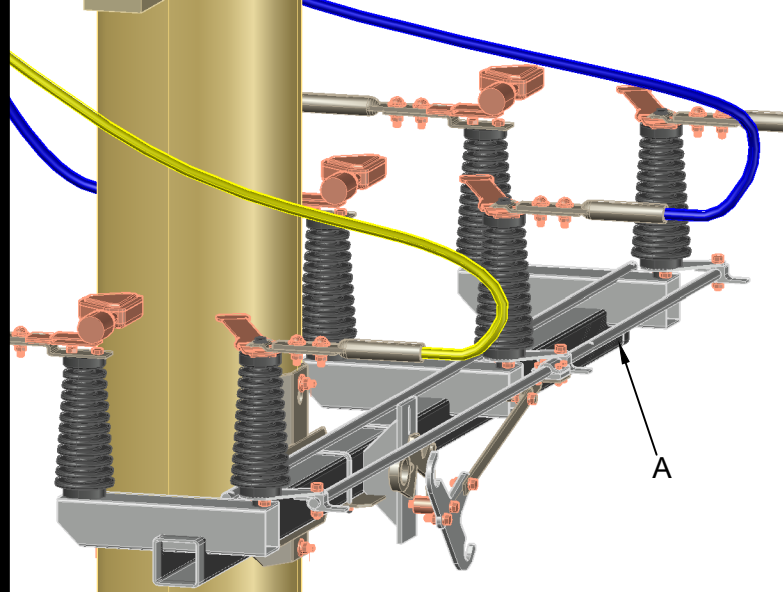
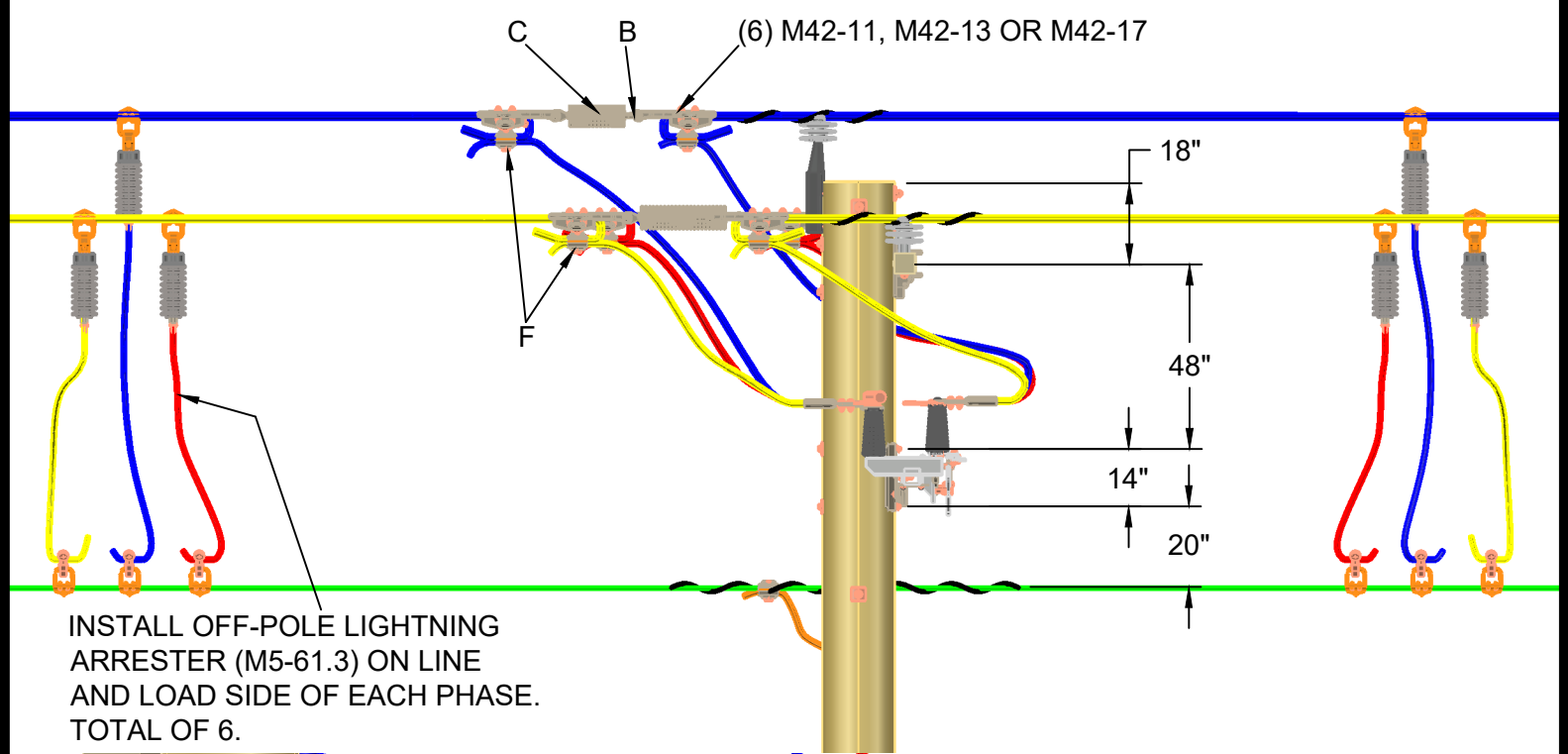
REV | A | DATE | 01/26/2024 | REVISION | ISSUE FOR CONSTRUCTION | BY | RWC | CHK | SSS | APR | MMG



CONSTRUCTION
ASSEMBLY UNIT

SECTIONALIZING AIR BREAK SWITCH
EXTENDO STICK OPERATED
AIR BREAK SWITCH ONLY

drawn:	approved:	date:	M3-15E
RWC	MMG	01/26/2024	



NOTE: USE #6 COPPER MINIMUM FOR GROUND.

ITEM	MATERIAL NUMBER	DESCRIPTION	QUANTITY
A	2002734	SWITCH ABS FBGLS 25 kV 900A	1
B	*2000197	CABLE INS RISER #6 CU SOLID	AS REQ'D.
C	2000262	CLEVIS ANCHOR SHACKLE SMALL DISTRIBUTION	3
D	2000551	INSULATOR SUSP POLY 35 kV CL	3
E	*2001295	WIRE COPPER BARE #6 SOLID SD	AS REQ'D.
F	**	HOT LINE STIRRUP-TYPE CONN. SEE M5-CONN PAGE 1.	AS REQ'D
	**	FARGO-TYPE CONN. SEE M5-CONN PAGE 2.	AS REQ'D

*DENOTES "GRAB BAG" ITEM.

** JUMPER CONNECTOR OPTIONS DEPEND ON CABLE SIZE.

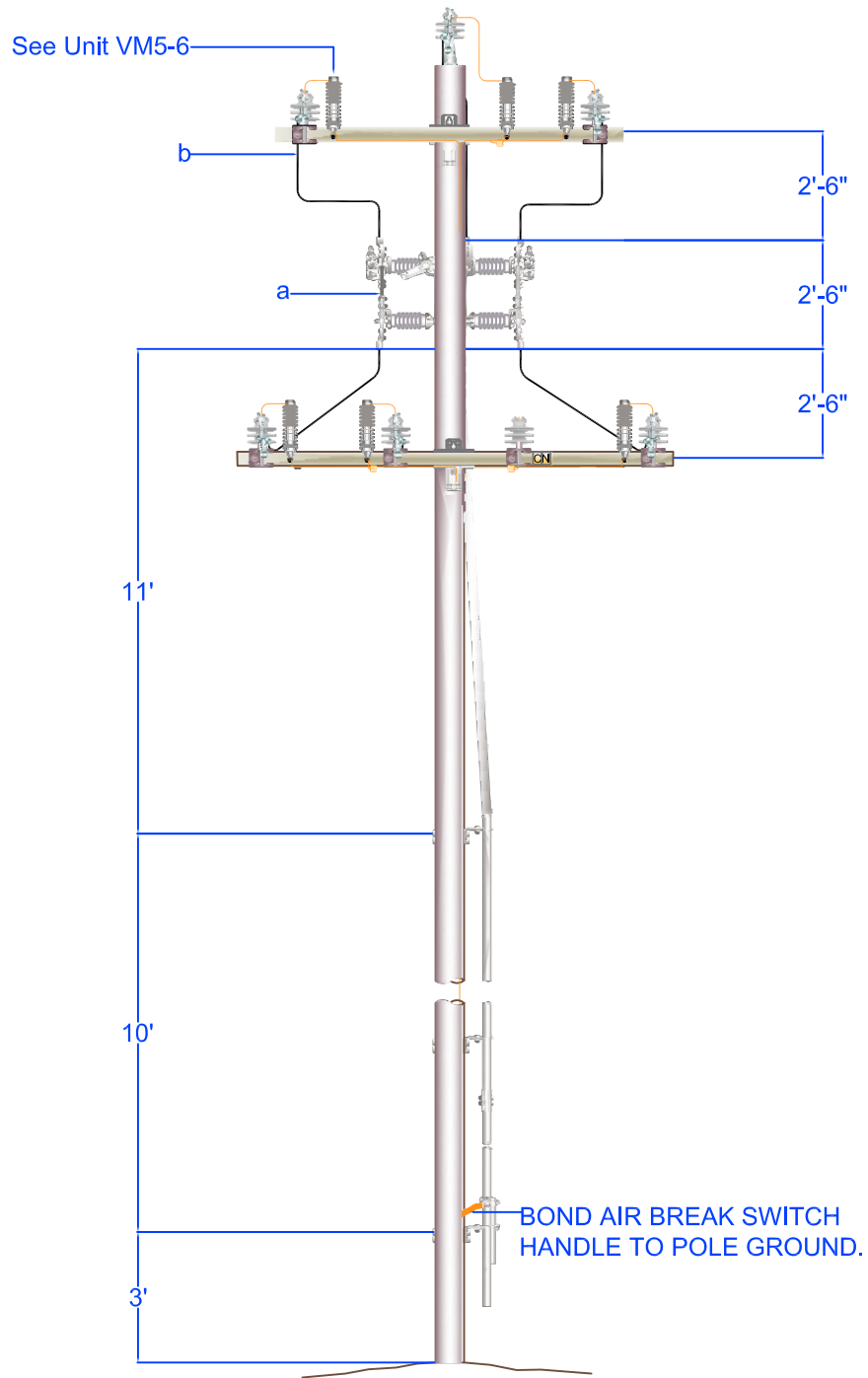
REV | A | DATE | 01/26/2024 | REVISION | ISSUE FOR CONSTRUCTION | BY | RWC | CHK | SSS | APR | MMG



CONSTRUCTION ASSEMBLY UNIT

SECTIONALIZING AIR BREAK SWITCH
EXTENDO STICK OPERATED
ON EXISTING TANGENT POLE

drawn:	approved:	date:	M3-15ELA
RWC	MMG	01/26/2024	



Item	Material Number	Quantity	Item Description
a	2000948	1	Switch Vert Break 25KV 900A
b	*2000214	As Required	Wp #500 MCM CU

* Denotes "Grab Bag" item.

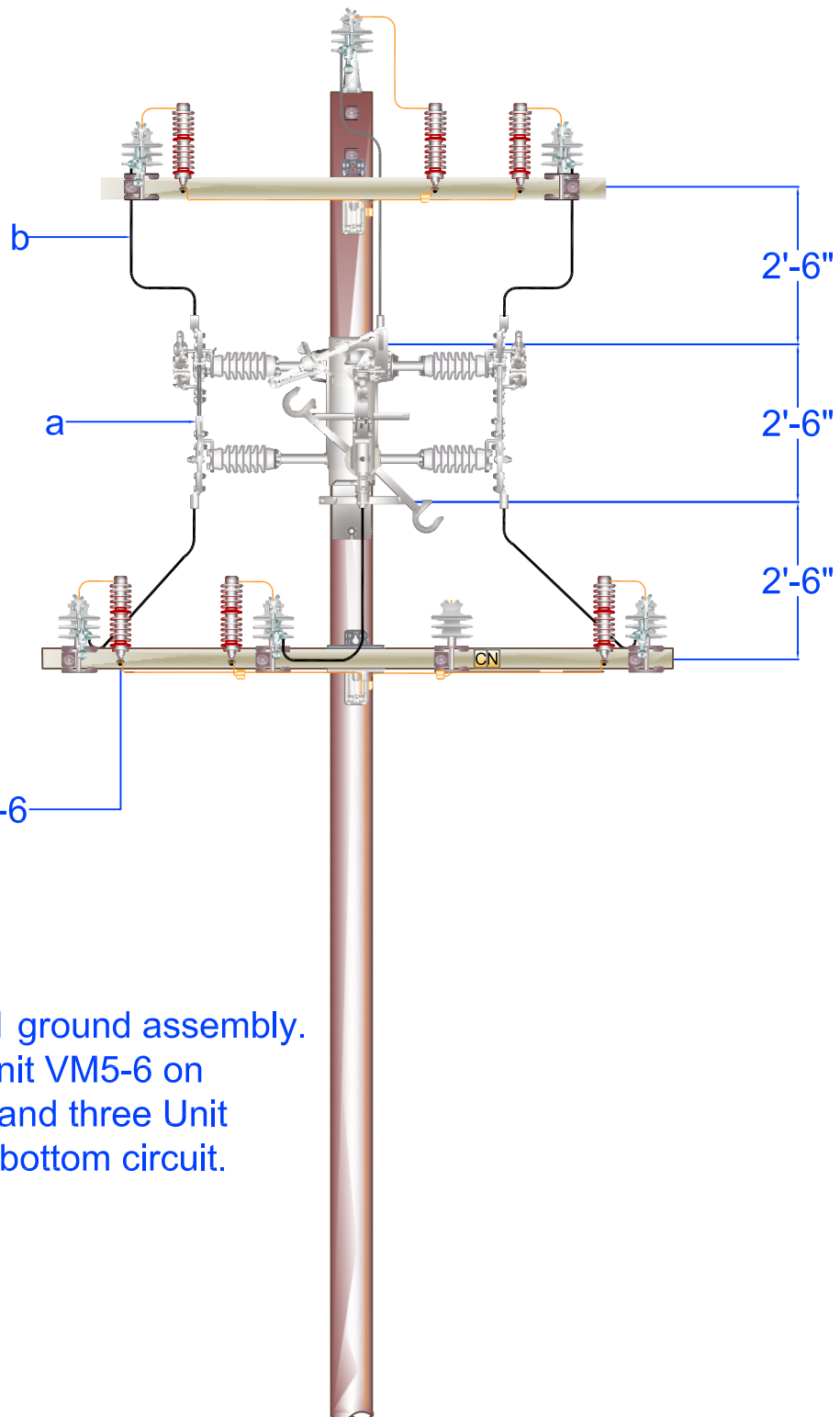


PEDERNALES ELECTRIC
COOPERATIVE, INC.
CONSTRUCTION ASSEMBLY UNIT

**Vertical Air Break Switch
Air Break Switch Only**

drawn: JBS	approved MJB	date: March 22, 2012
---------------	-----------------	-------------------------

M3-16



See Unit VM5-6

Note:

- 1) Install M2-15.1 ground assembly.
- 2) Install three Unit VM5-6 on the top circuit and three Unit VM5-6 on the bottom circuit.

Item	Material Number	Quantity	Item Description
a	2000920	1	Switch ABS Vert Ext 25KV 900A
b	*2000214	As Required	Wp #500 MCM CU

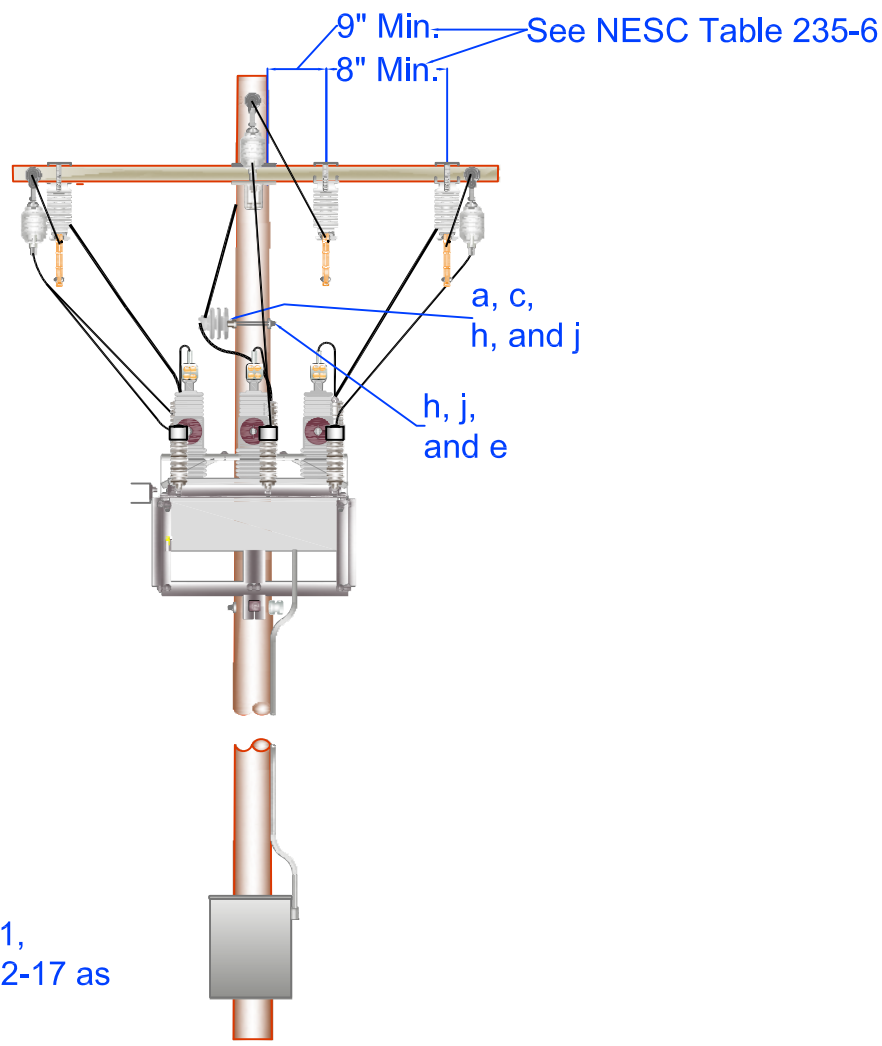
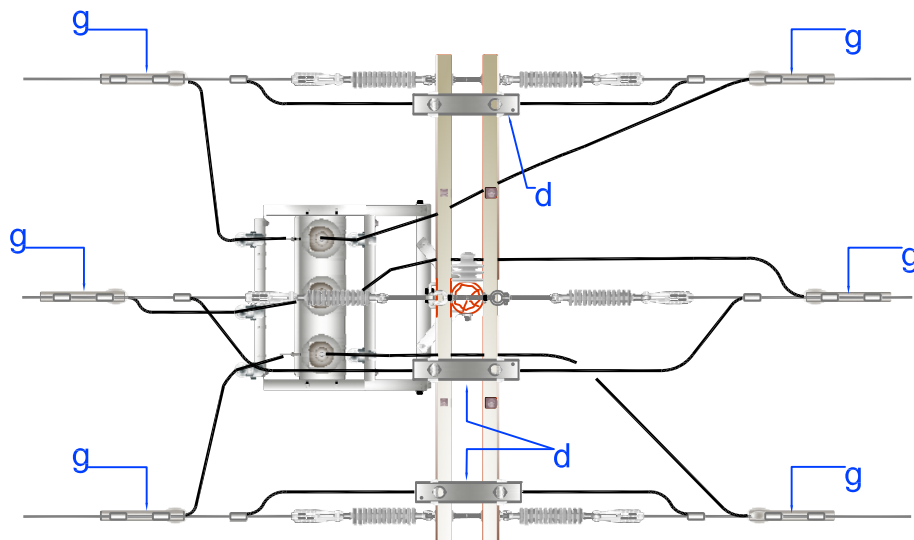
*Denotes "Grab Bag" item.



PEDERNALES ELECTRIC
COOPERATIVE, INC.
CONSTRUCTION ASSEMBLY UNIT

**Vertical Air Break Switch
Extendo Stick Operated
Air Break Switch Only**

drawn: JBS	approved MJB	date: March 22, 2012	M3-16E
----------------------	------------------------	-------------------------	---------------



Specify M42-11, M42-11.1,
M42-13, M42-13.1, or M42-17 as
required.

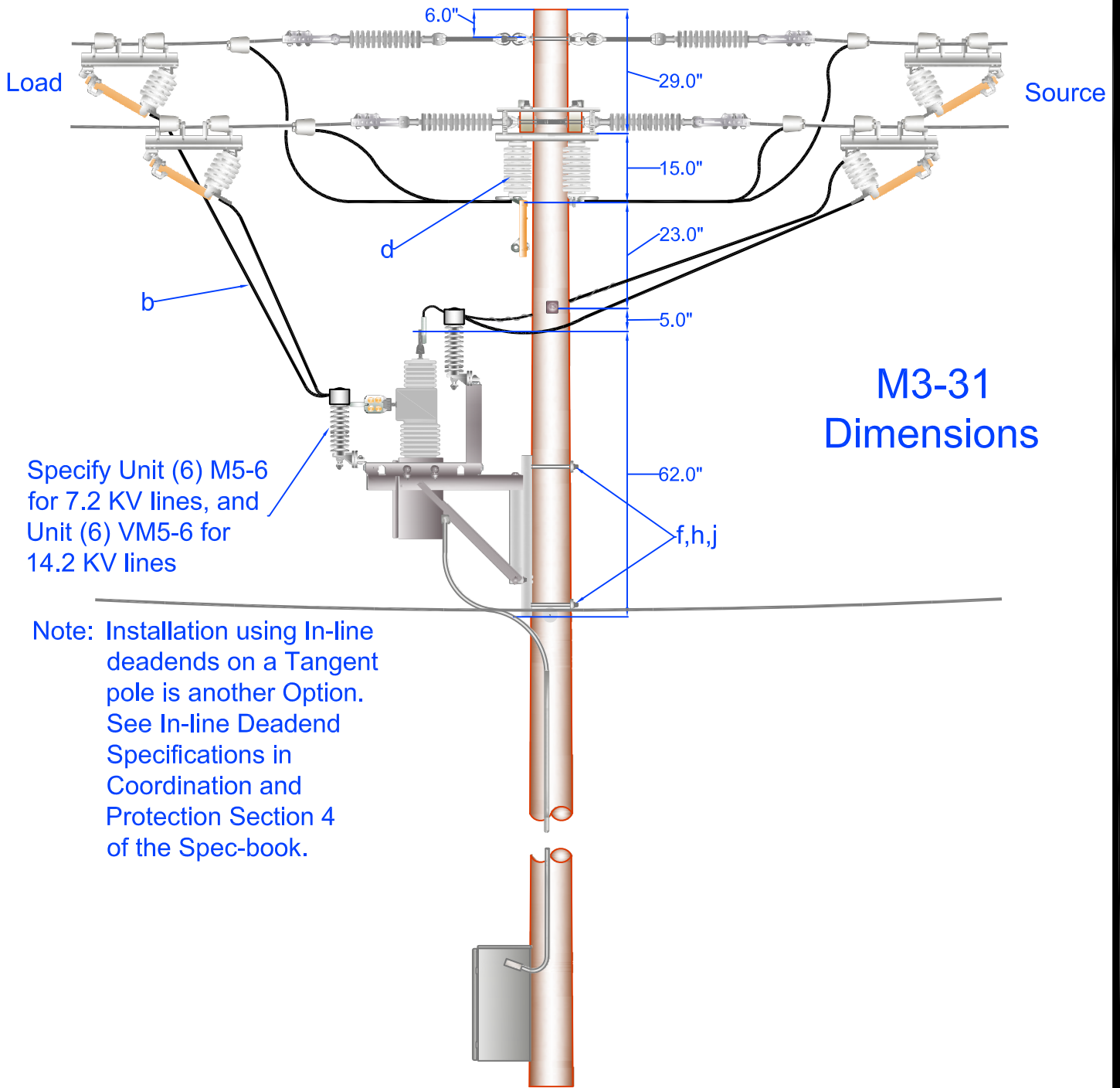


PEDERNALES ELECTRIC
COOPERATIVE, INC.
CONSTRUCTION ASSEMBLY UNIT

**Three Phase Single Tank OCR with
Solid blade disconnect switch.**
Page 1 of 2

drawn:	approved	date:
JBS	MJB	March 29, 2012

M3-31



M3-31 Dimensions

Specify Unit (6) M5-6 for 7.2 KV lines, and Unit (6) VM5-6 for 14.2 KV lines

Note: Installation using In-line deadends on a Tangent pole is another Option. See In-line Deadend Specifications in Coordination and Protection Section 4 of the Spec-book.

Item	Material Number	Quantity	Item Description	Item	Material Number	Quantity	Item Description
a	2000001	1	Adapter Insulator 1 3/8"	f	*	2	Bolt Machine 5/8"
b	2000214	As Req'd.	Cable Service Wp #500 MCM CU	g	2000278	6	Conn HL Gp 8-2/0-8-1/0
c	2000541	1	Insulator Pin Type CL 55-6	h	*3000153	18	Locknut 5/8" M F
d	2000930	3	Switch Disc 25KV 600A	j	*3000240	14	Washer Sq F 2 1/4
e	*	1	Bolt Dbl Arming 5/8"	k	*	As Req'd	Connectors

*Denotes "Grab Bag" Item. All bolt lengths are dependent upon pole class.

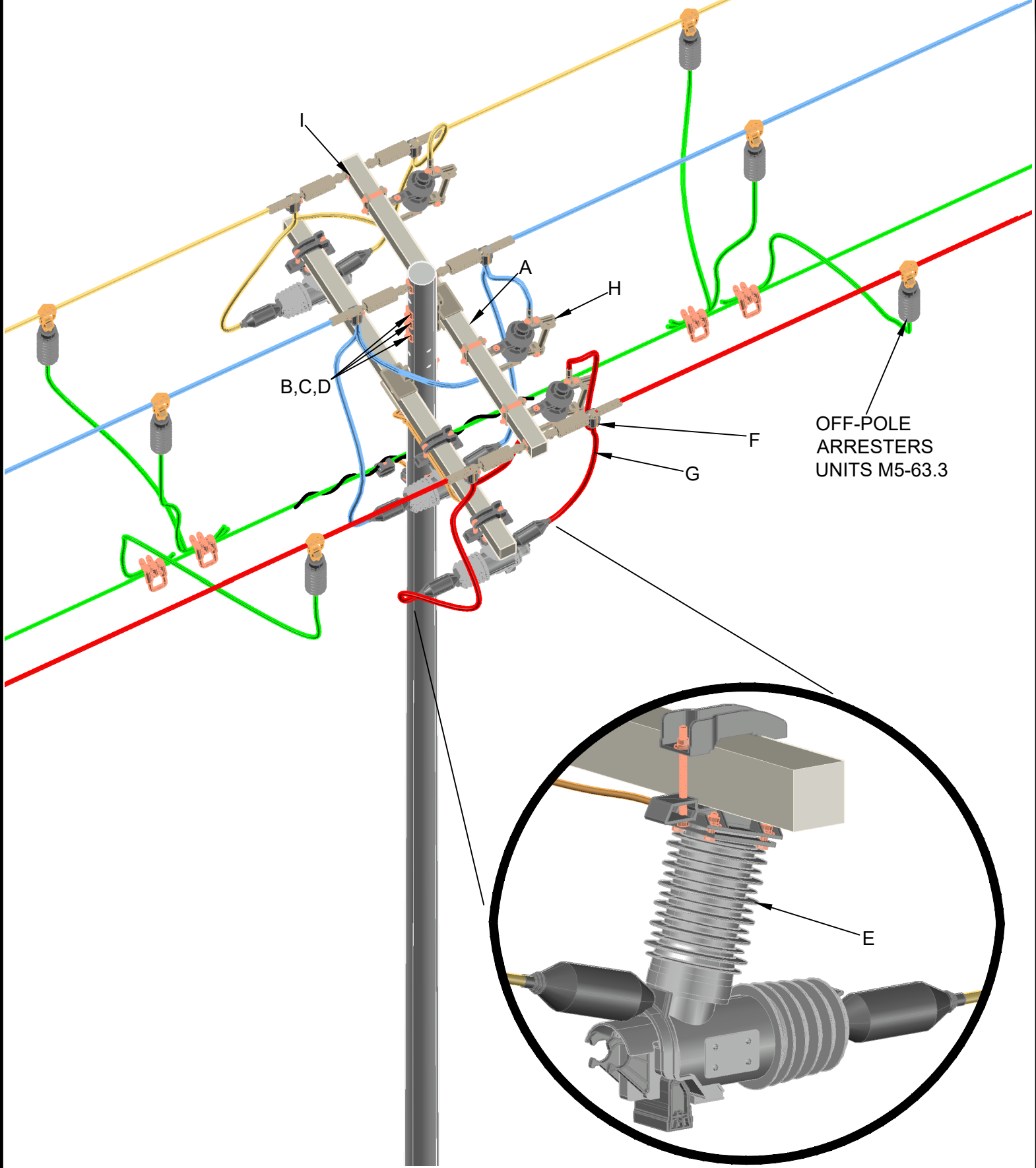


PEDERNALES ELECTRIC
COOPERATIVE, INC.
CONSTRUCTION ASSEMBLY UNIT

Three Phase Single Tank OCR with
Solid blade disconnect switch.
Page 2 of 2

drawn: JBS	approved MJB	date: March 29, 2012
---------------	-----------------	-------------------------

M3-31



BLOW UP OF SINGLE RECLOSER

REV | A | DATE | 10/10/2022 | REVISION | ISSUE FOR CONSTRUCTION | BY | RWC | CHK | SSS | APR | MMG

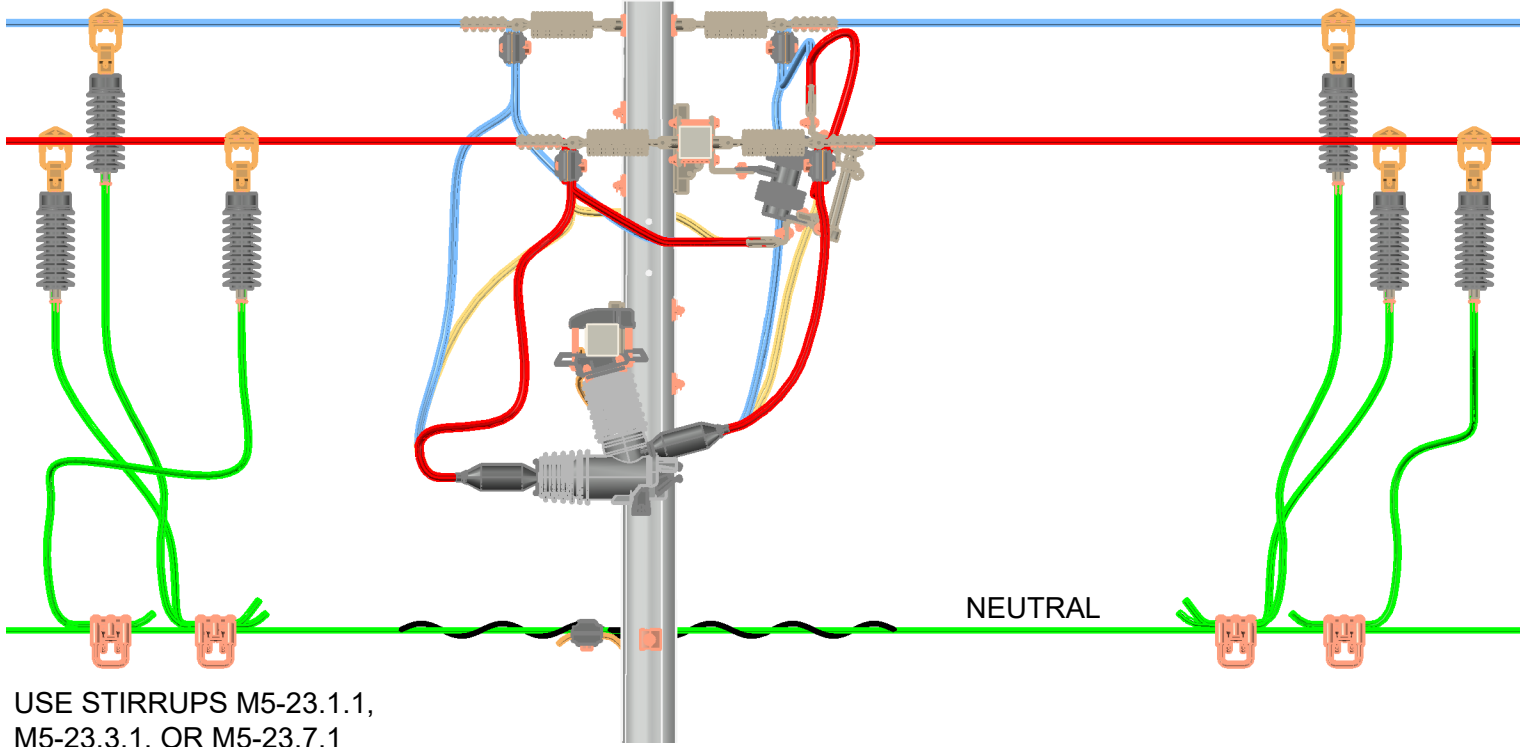


PEDERNALES ELECTRIC
COOPERATIVE, INC.

7.2 kV THREE SINGLE-PHASE CIRCUIT
RECLOSERS WITH 600A BYPASS SWITCHES
ON A DOUBLE DEAD END
PAGE 1 OF 3

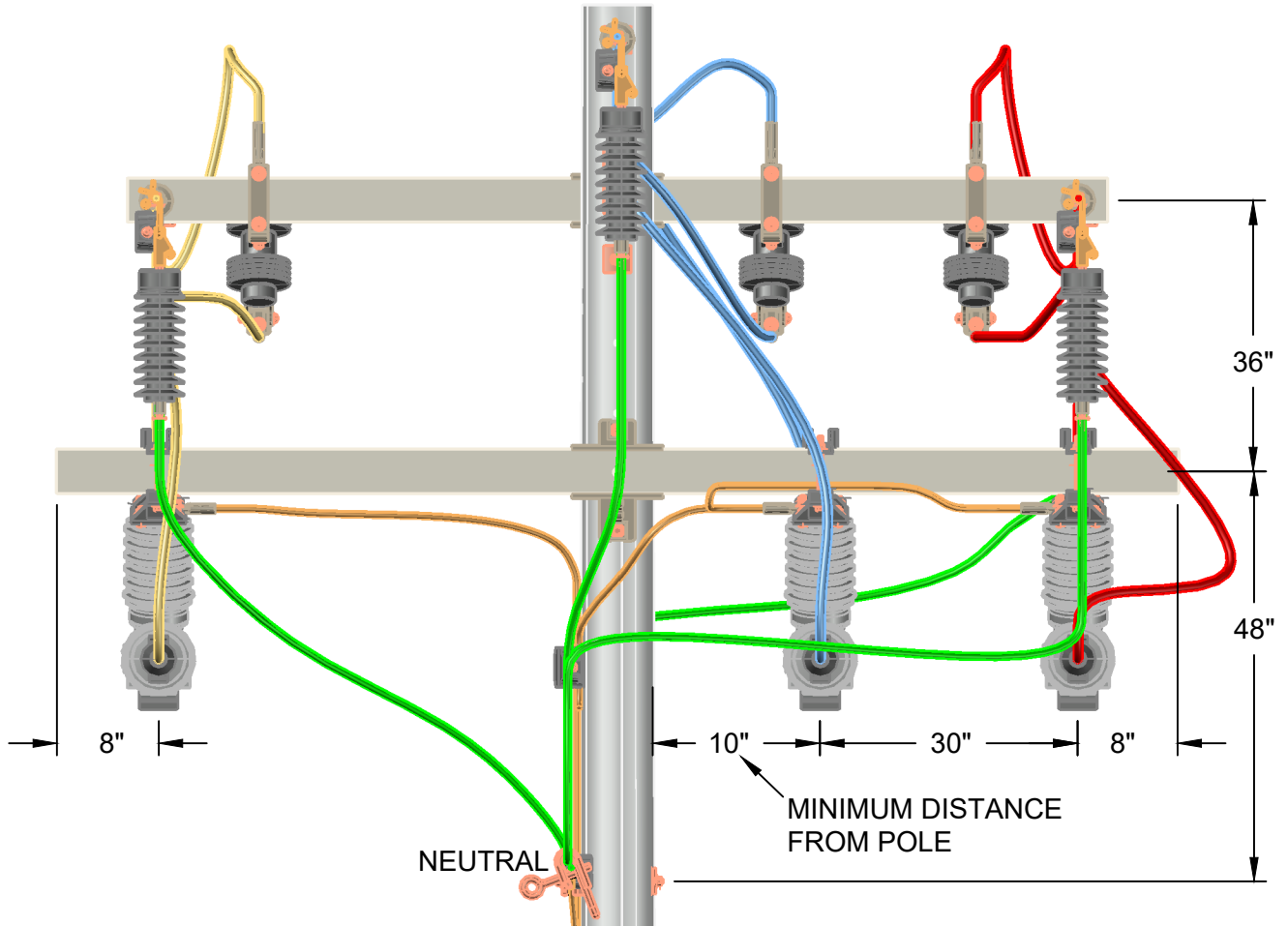
drawn:	approved:	date:	M3-32
RWC	MMG	10/10/2022	

SIDE VIEW



USE STIRRUPS M5-23.1.1,
M5-23.3.1, OR M5-23.7.1
ACCORDING TO CONDUCTOR SIZE

FRONT VIEW



REV | A | DATE | 10/10/2022 | REVISION | ISSUE FOR CONSTRUCTION | BY | RWC | CHK | SSS | APR | MMG

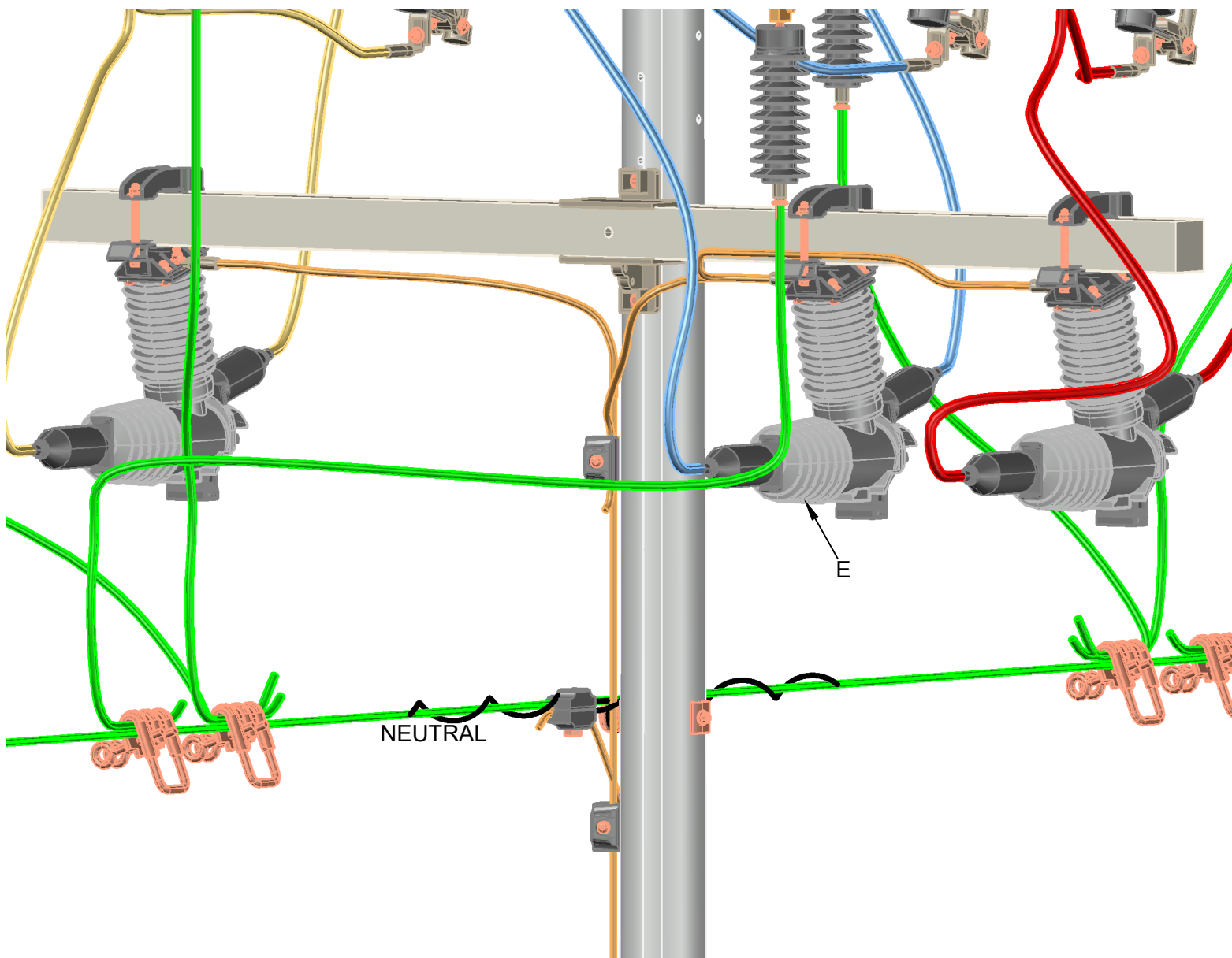


PEDERNALES ELECTRIC
COOPERATIVE, INC.

7.2 kV THREE SINGLE-PHASE CIRCUIT
RECLOSERS WITH 600A BYPASS SWITCHES
ON A DOUBLE DEAD END
PAGE 2 OF 3

drawn:	approved:	date:	M3-32
RWC	MMG	10/10/2022	

FRONT VIEW



ITEM	MATERIAL NUMBER	DESCRIPTION	QUANTITY
A	2001324	XARM FIBERGLASS 10' TANGENT	1
B	*	BOLT MACHINE 5/8"	AS REQ'D
C	*3000240 or	WASHER SQUARE FLAT 2 1/4" WITH 11/16" HOLE	AS REQ'D
C	*3000237 or	WASHER SQUARE CURVED 4" WITH 15/16" HOLE	AS REQ'D
C	*3000235	WASHER SQUARE CURVED 3" WITH 13/16" HOLE	AS REQ'D
D	*3000153	LOCKNUT 5/8" MF	AS REQ'D
E	2002992	CMR RECLOSER 7.2 kV	3
F	2001511	CONNECTOR HL GA VISE 4/0 STR. - 795 AAC	12
G	*	4/0 CU JUMPERS	AS REQ'D
H	2002687	SWITCH DISCONNECT 25 kV 600A SINGLE INSULATOR	3
I	*	BOLT DOUBLE ARMING 5/8"	AS REQ'D

*DENOTES "GRAB BAG" ITEM. ALL BOLT LENGTHS DEPEND ON POLE CLASS.

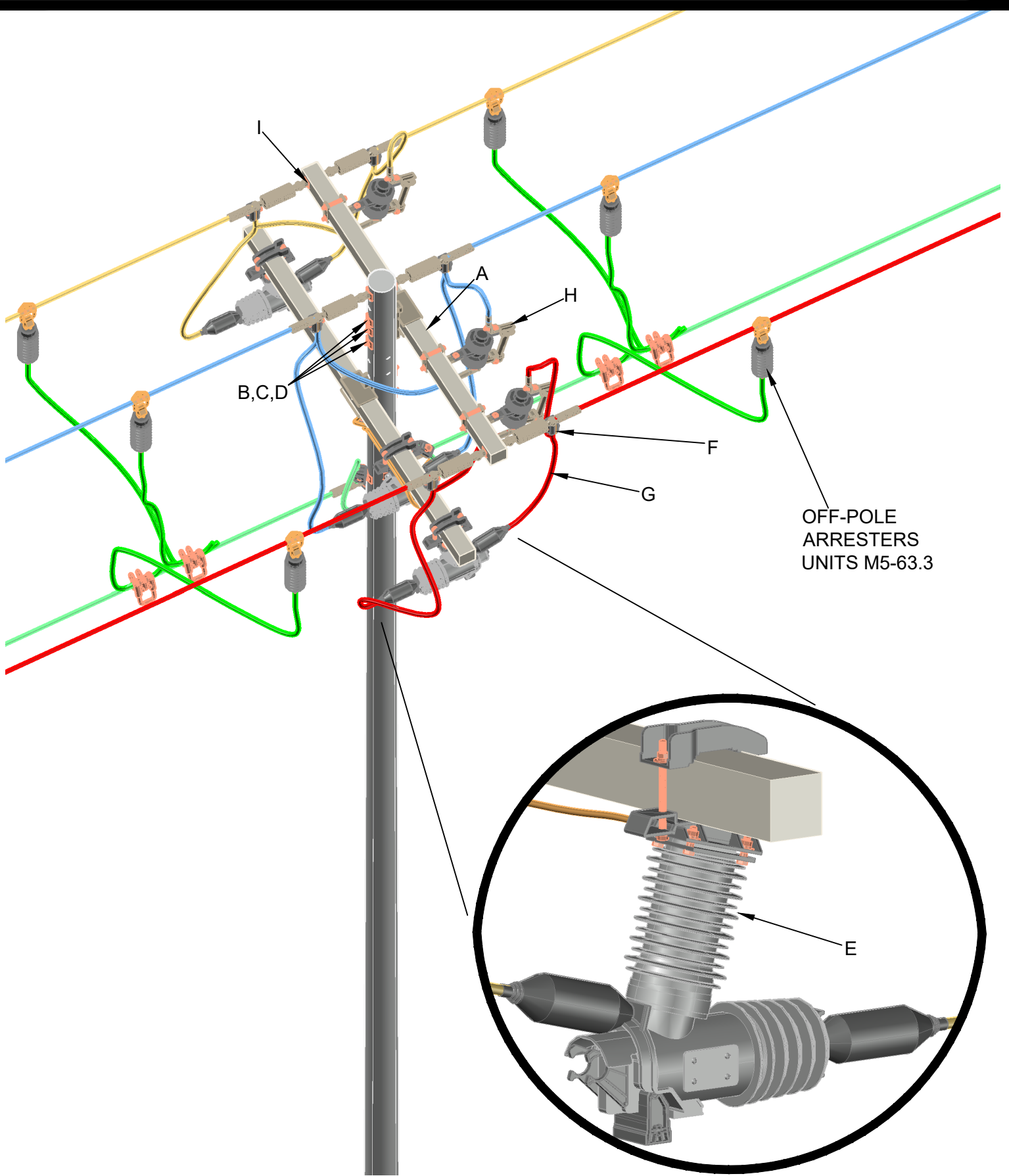
REV | A | DATE | 10/10/2022 | REVISION | ISSUE FOR CONSTRUCTION | BY | RWC | CHK | SSS | APR | MMG



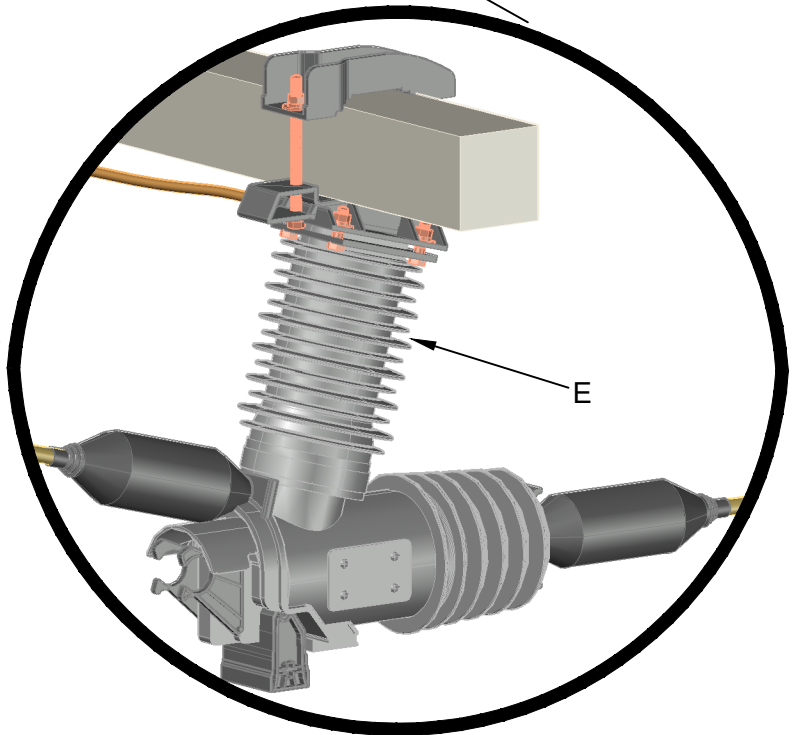
PEDERNALES ELECTRIC
COOPERATIVE, INC.

7.2 kV THREE SINGLE-PHASE CIRCUIT
RECLOSERS WITH 600A BYPASS SWITCHES
ON A DOUBLE DEAD END
PAGE 3 OF 3

drawn:	approved:	date:	M3-32
RWC	MMG	10/10/2022	



OFF-POLE
ARRESTERS
UNITS M5-63.3



BLOW UP OF SINGLE RECLOSER

REV | A | DATE | 10/10/2022 | REVISION | ISSUE FOR CONSTRUCTION | BY | RWC | CHK | SSS | APR | MMG

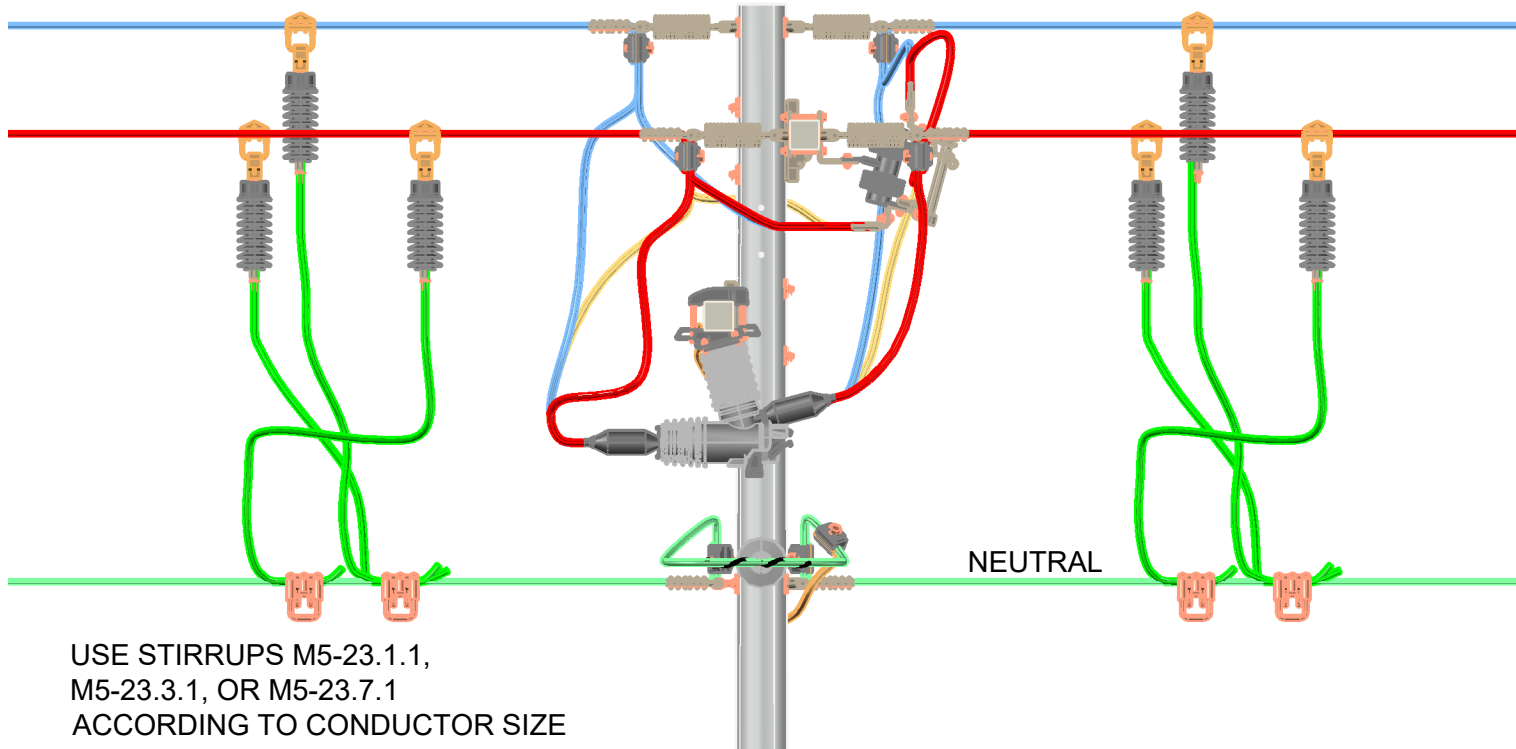


PEDERNALES ELECTRIC
COOPERATIVE, INC.

14.4 kV THREE SINGLE-PHASE CIRCUIT
RECLOSERS WITH 600A BYPASS SWITCHES
ON A DOUBLE DEAD END
PAGE 1 OF 3

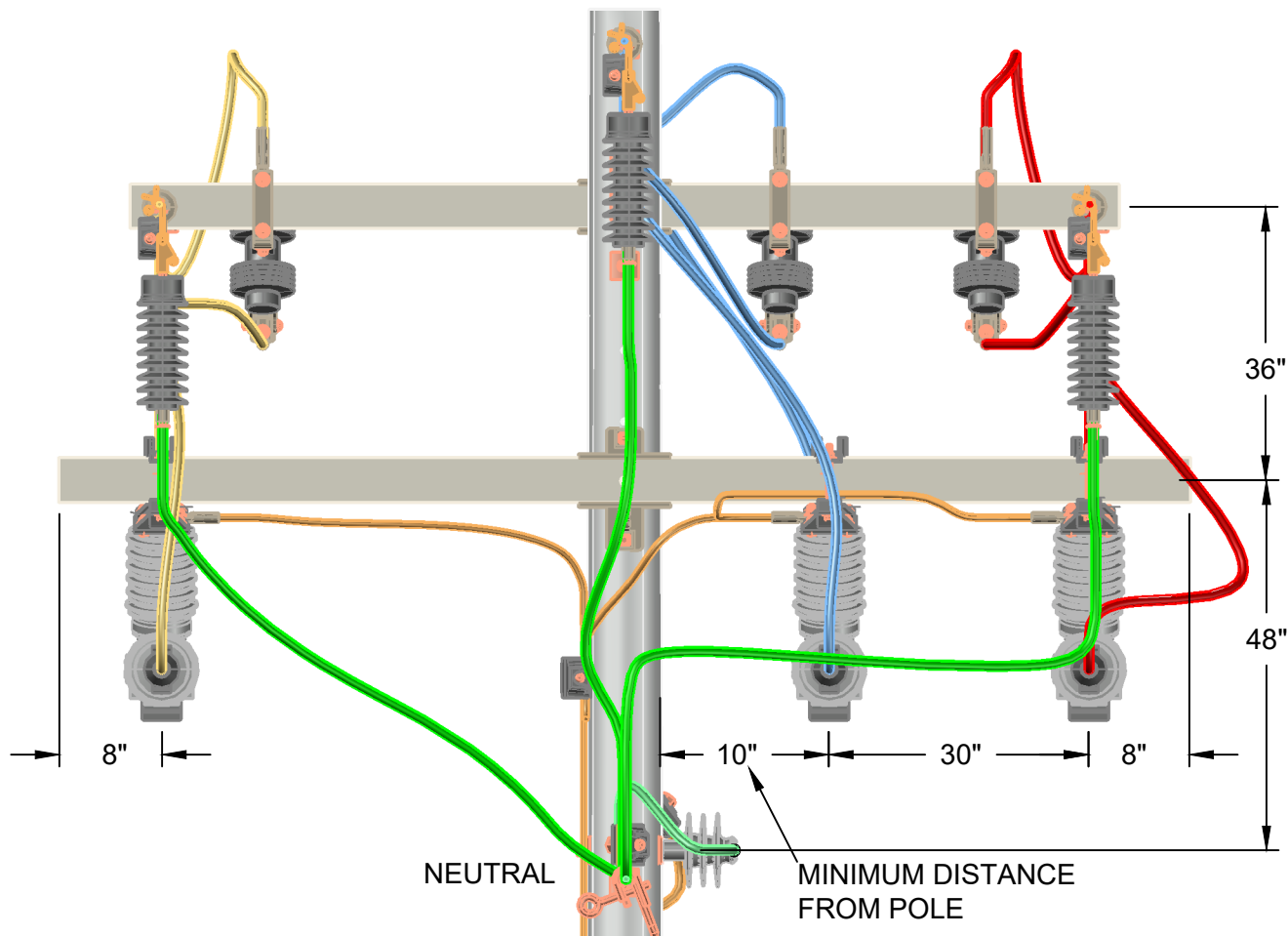
drawn:	approved:	date:	M3-33
RWC	MMG	10/10/2022	

SIDE VIEW



USE STIRRUPS M5-23.1.1,
M5-23.3.1, OR M5-23.7.1
ACCORDING TO CONDUCTOR SIZE

FRONT VIEW



REV | A | DATE | 10/10/2022 | REVISION | ISSUE FOR CONSTRUCTION | BY | RWC | CHK | SSS | APR | MMG

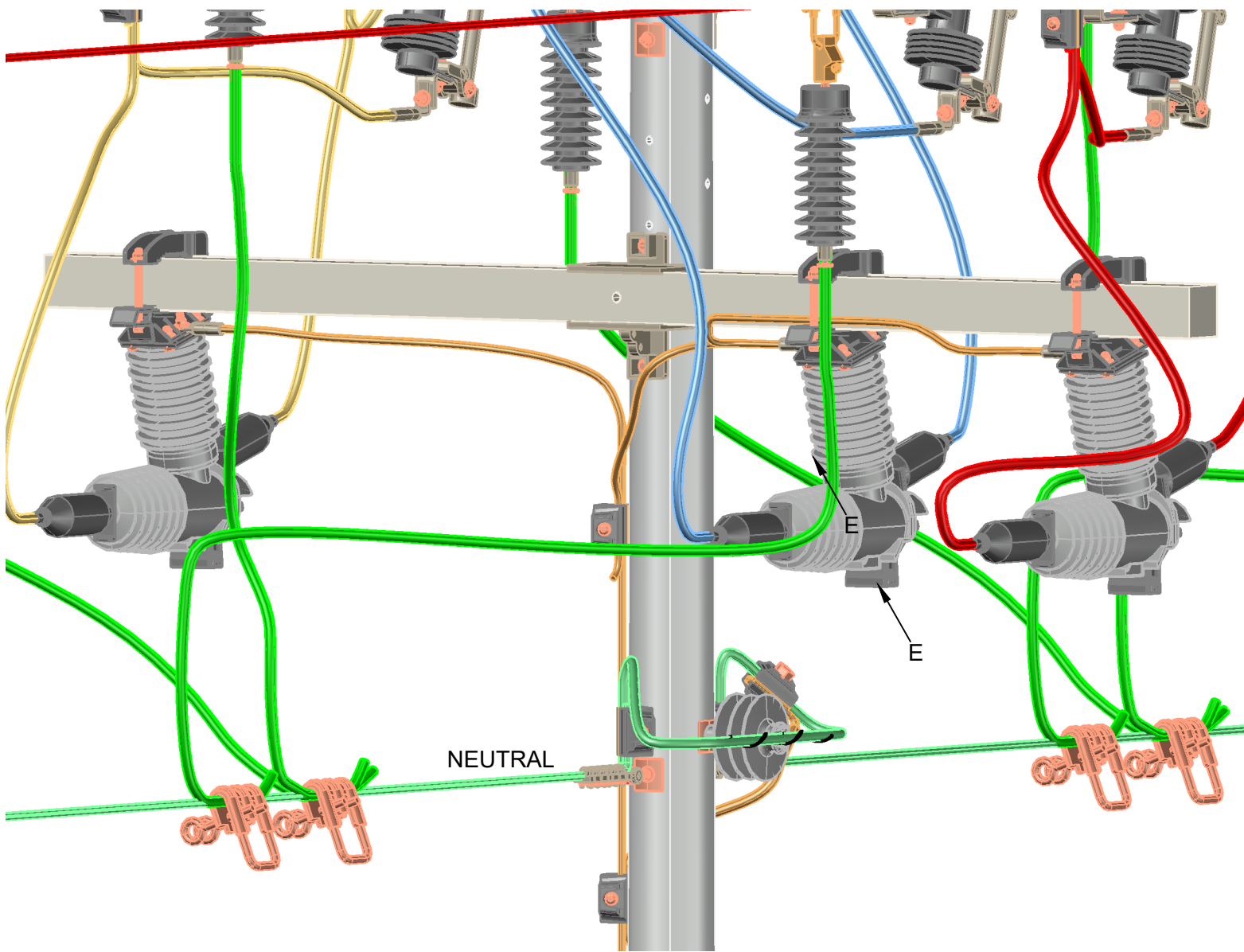


PEDERNALES ELECTRIC
COOPERATIVE, INC.

14.4 kV THREE SINGLE-PHASE CIRCUIT
RECLOSERS WITH 600A BYPASS SWITCHES
ON A DOUBLE DEAD END
PAGE 2 OF 3

drawn:	approved:	date:	M3-33
RWC	MMG	10/10/2022	

FRONT VIEW



ITEM	MATERIAL NUMBER	DESCRIPTION	QUANTITY
A	2001324	XARM FIBERGLASS 10' TANGENT	1
B	*	BOLT MACHINE 5/8"	AS REQ'D
C	*3000240 or	WASHER SQUARE FLAT 2 1/4" WITH 11/16" HOLE	AS REQ'D
C	*3000237 or	WASHER SQUARE CURVED 4" WITH 15/16" HOLE	AS REQ'D
C	*3000235	WASHER SQUARE CURVED 3" WITH 13/16" HOLE	AS REQ'D
D	*3000153	LOCKNUT 5/8" MF	AS REQ'D
E	2002991	CMR RECLOSER 14.4 kV	3
F	2001511	CONNECTOR HL GA VISE 4/0 STR. - 795 AAC	12
G	*	4/0 CU JUMPERS	AS REQ'D
H	2002687	SWITCH DISCONNECT 25 kV 600A SINGLE INSULATOR	3
I	*	BOLT DOUBLE ARMING 5/8"	AS REQ'D

*DENOTES "GRAB BAG" ITEM. ALL BOLT LENGTHS DEPEND ON POLE CLASS.

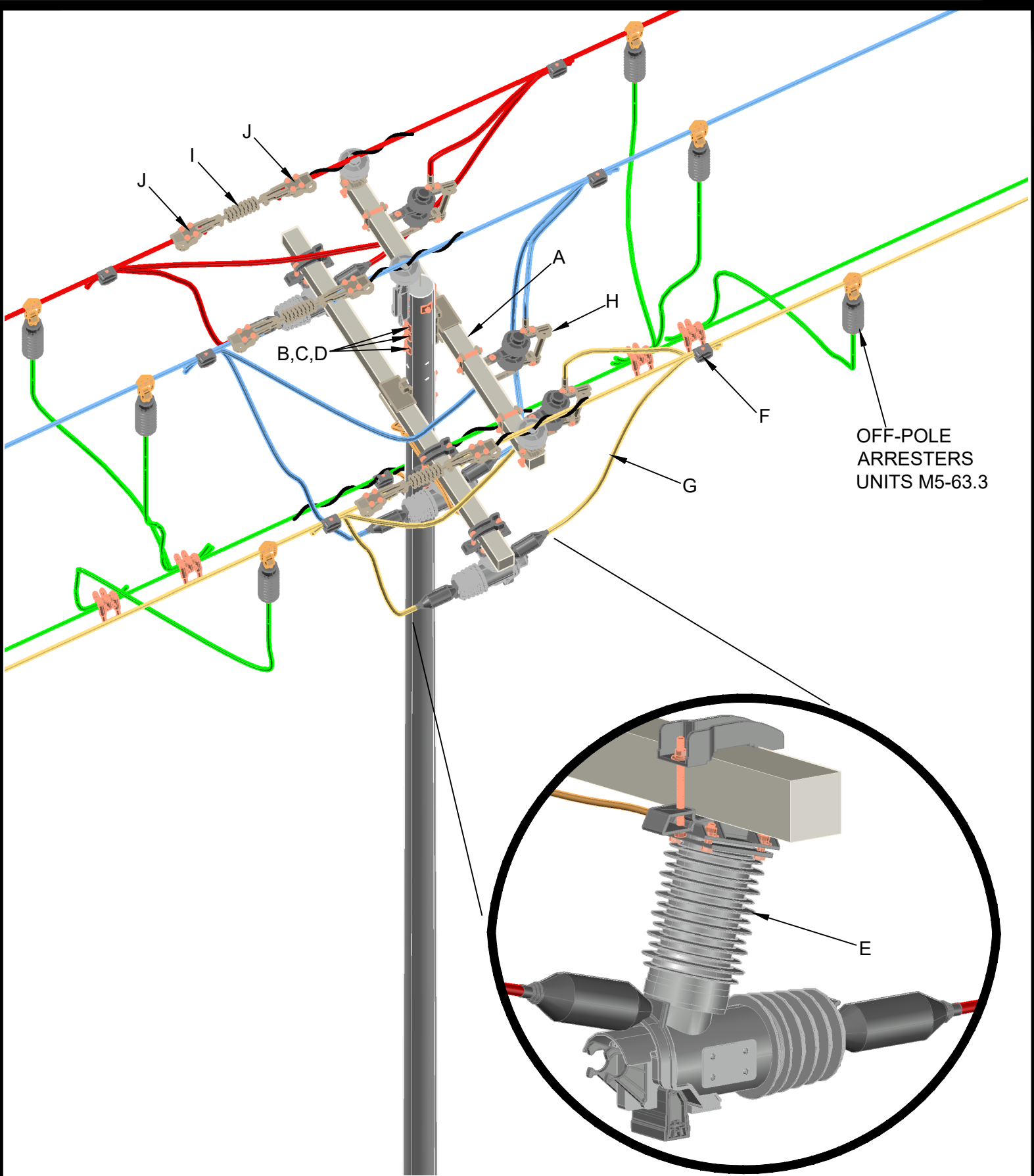
REV | A | DATE | 10/10/2022 | REVISION | ISSUE FOR CONSTRUCTION | BY | RWC | CHK | SSS | APR | MMG



**PEDERNALES ELECTRIC
COOPERATIVE, INC.**

14.4 kV THREE SINGLE-PHASE CIRCUIT
RECLOSERS WITH 600A BYPASS SWITCHES
ON A DOUBLE DEAD END
PAGE 3 OF 3

drawn:	approved:	date:	M3-33
RWC	MMG	10/10/2022	



OFF-POLE
ARRESTERS
UNITS M5-63.3

BLOWUP OF SINGLE RECLOSER

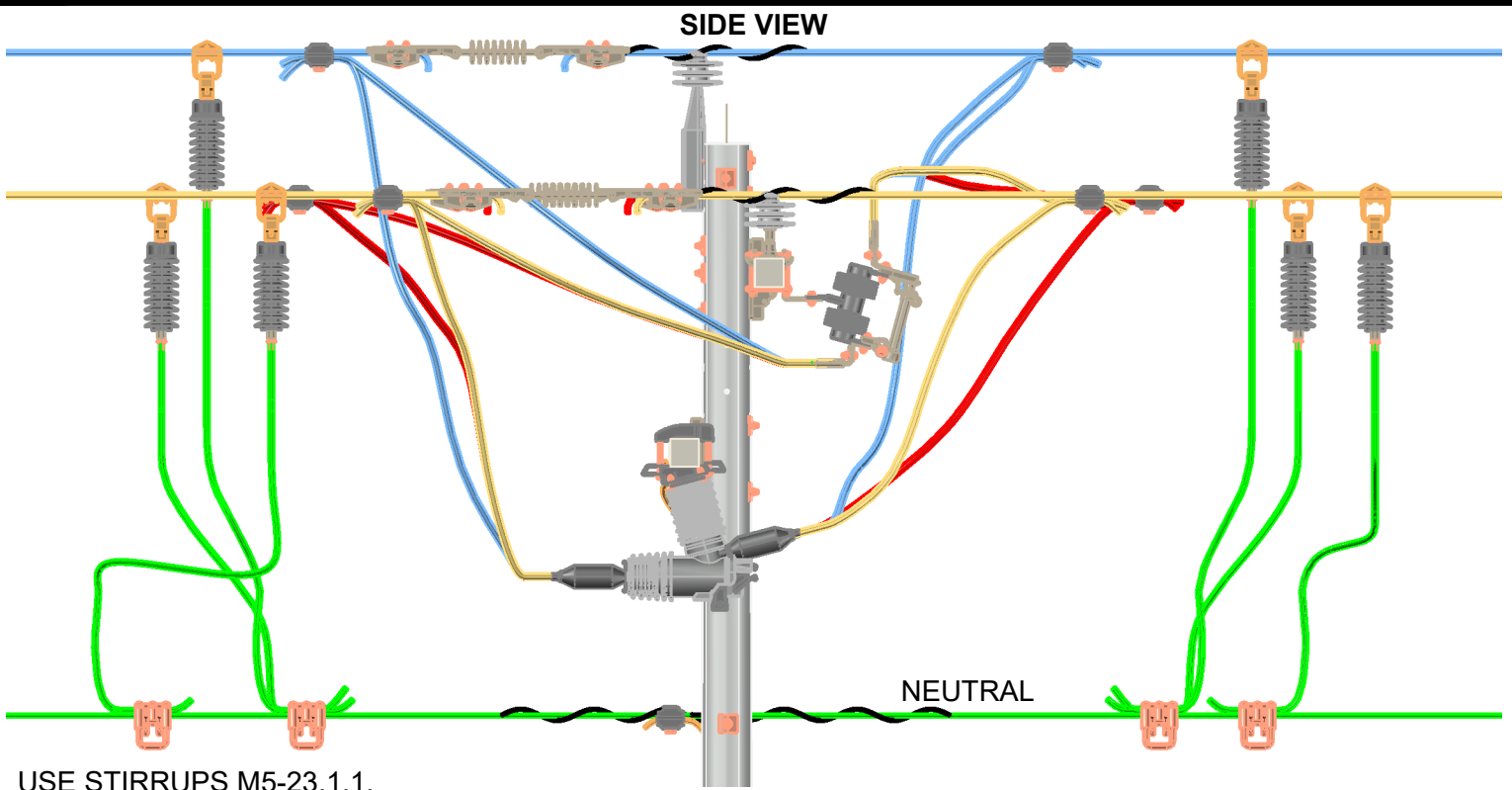
REV	A	DATE	10/10/2022	REVISION	ISSUE FOR CONSTRUCTION	BY	RWC	CHK	SSS	APR	MMG
-----	---	------	------------	----------	------------------------	----	-----	-----	-----	-----	-----



PEDERNALES ELECTRIC
COOPERATIVE, INC.

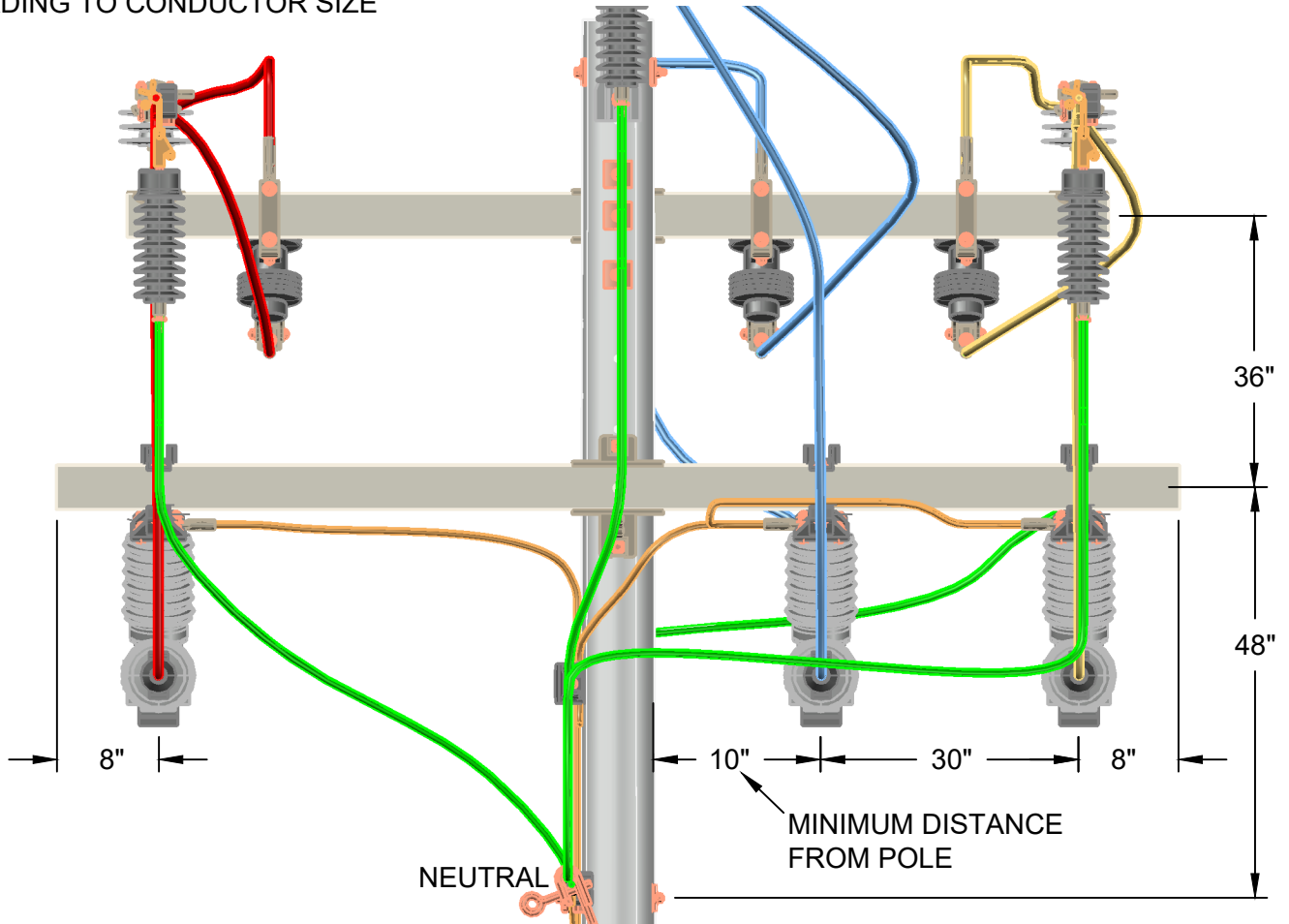
7.2 kV THREE SINGLE-PHASE CIRCUIT
RECLOSERS WITH 600A BYPASS SWITCHES
ON A TANGENT POLE
PAGE 1 OF 3

drawn:	approved:	date:	M3-34
RWC	MMG	10/10/2022	



USE STIRRUPS M5-23.1.1,
M5-23.3.1, OR M5-23.7.1
ACCORDING TO CONDUCTOR SIZE

FRONT VIEW



REV | A | DATE | 10/10/2022 | REVISION | ISSUE FOR CONSTRUCTION | BY | RWC | CHK | SSS | APR | MMG

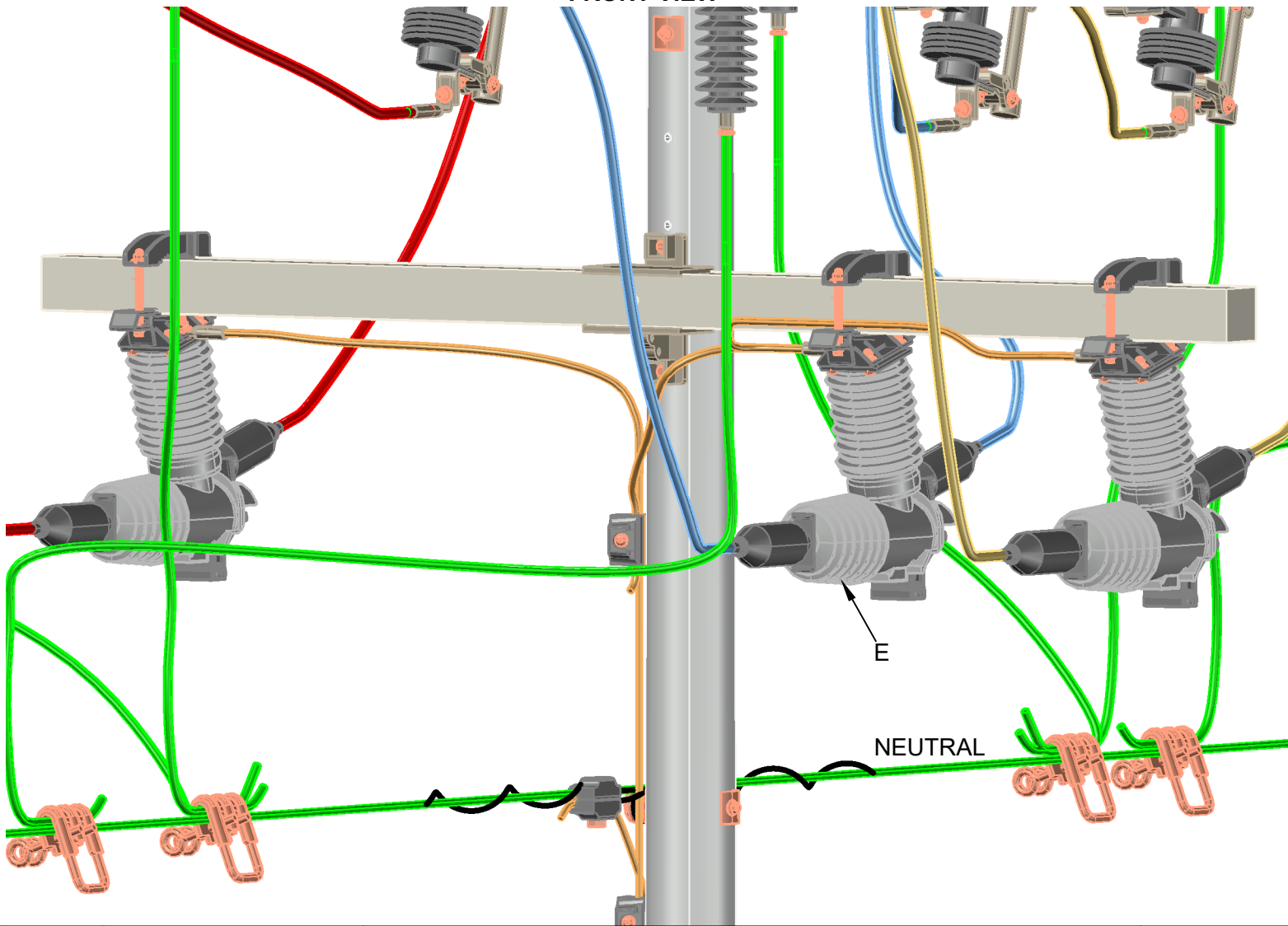


PEDERNALES ELECTRIC
COOPERATIVE, INC.

7.2 kV THREE SINGLE-PHASE CIRCUIT
RECLOSERS WITH 600A BYPASS SWITCHES
ON A TANGENT POLE
PAGE 2 OF 3

drawn:	approved:	date:	M3-34
RWC	MMG	10/10/2022	

FRONT VIEW



ITEM	MATERIAL NUMBER	DESCRIPTION	QUANTITY
A	2001324	XARM FIBERGLASS 10' TANGENT	1
B	*	BOLT MACHINE 5/8"	AS REQ'D
C	*3000240 or	WASHER SQUARE FLAT 2 1/4" WITH 11/16" HOLE	AS REQ'D
C	*3000237 or	WASHER SQUARE CURVED 4" WITH 15/16" HOLE	AS REQ'D
C	*3000235	WASHER SQUARE CURVED 3" WITH 13/16" HOLE	AS REQ'D
D	*3000153	LOCKNUT 5/8" MF	AS REQ'D
E	2002992	CMR RECLOSER 7.2 kV	3
F	2001511	CONNECTOR HL GA VISE 4/0 STR. - 795 AAC	12
G	*	4/0 CU JUMPERS	AS REQ'D
H	2002687	SWITCH DISCONNECT 25 kV 600A SINGLE INSULATOR	3
I	2000551	INSULATOR SUSP POLY 35 kV CL	3
J	2000248	CLAMP DE S/L STRT - 6 - 2/0 ACSR	6
J	2000243	CLAMP DE 6 - 2/0 ACSR W/BAIL	6
J	2000242	CLAMP DE 336 - 795 ACSR	6

*DENOTES "GRAB BAG" ITEM. ALL BOLT LENGTHS DEPEND ON POLE CLASS.

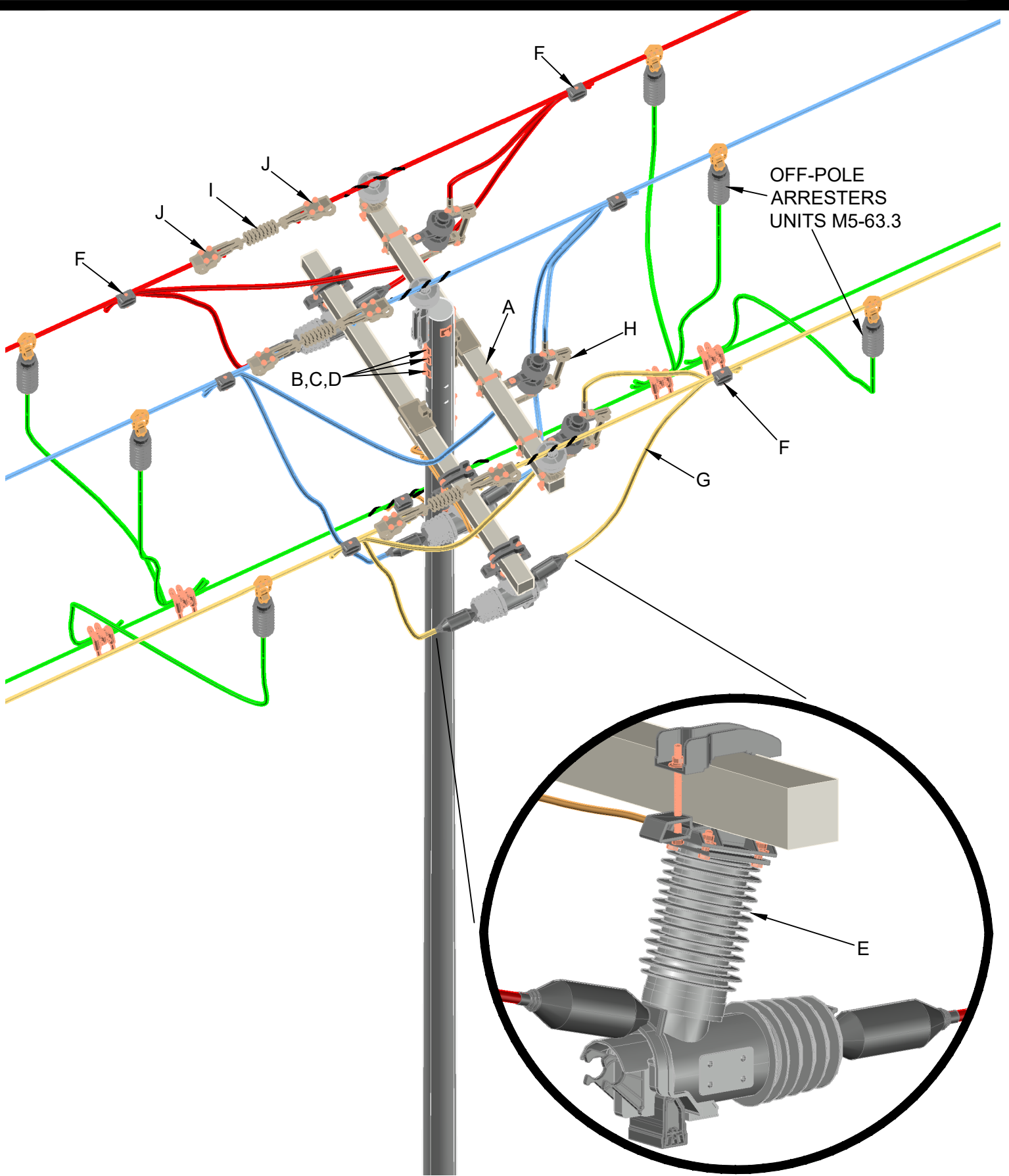
REV | A | DATE | 10/10/2022 | REVISION | ISSUE FOR CONSTRUCTION | BY | RWC | CHK | SSS | APR | MMG



PEDERNALES ELECTRIC
COOPERATIVE, INC.

7.2 kV THREE SINGLE-PHASE CIRCUIT
RECLOSERS WITH 600A BYPASS SWITCHES
ON A TANGENT POLE
PAGE 3 OF 3

drawn:	approved:	date:	M3-34
RWC	MMG	10/10/2022	



BLOWUP OF SINGLE RECLOSER

REV | A | DATE | 10/10/2022 | REVISION | ISSUE FOR CONSTRUCTION | BY | RWC | CHK | SSS | APR | MMG

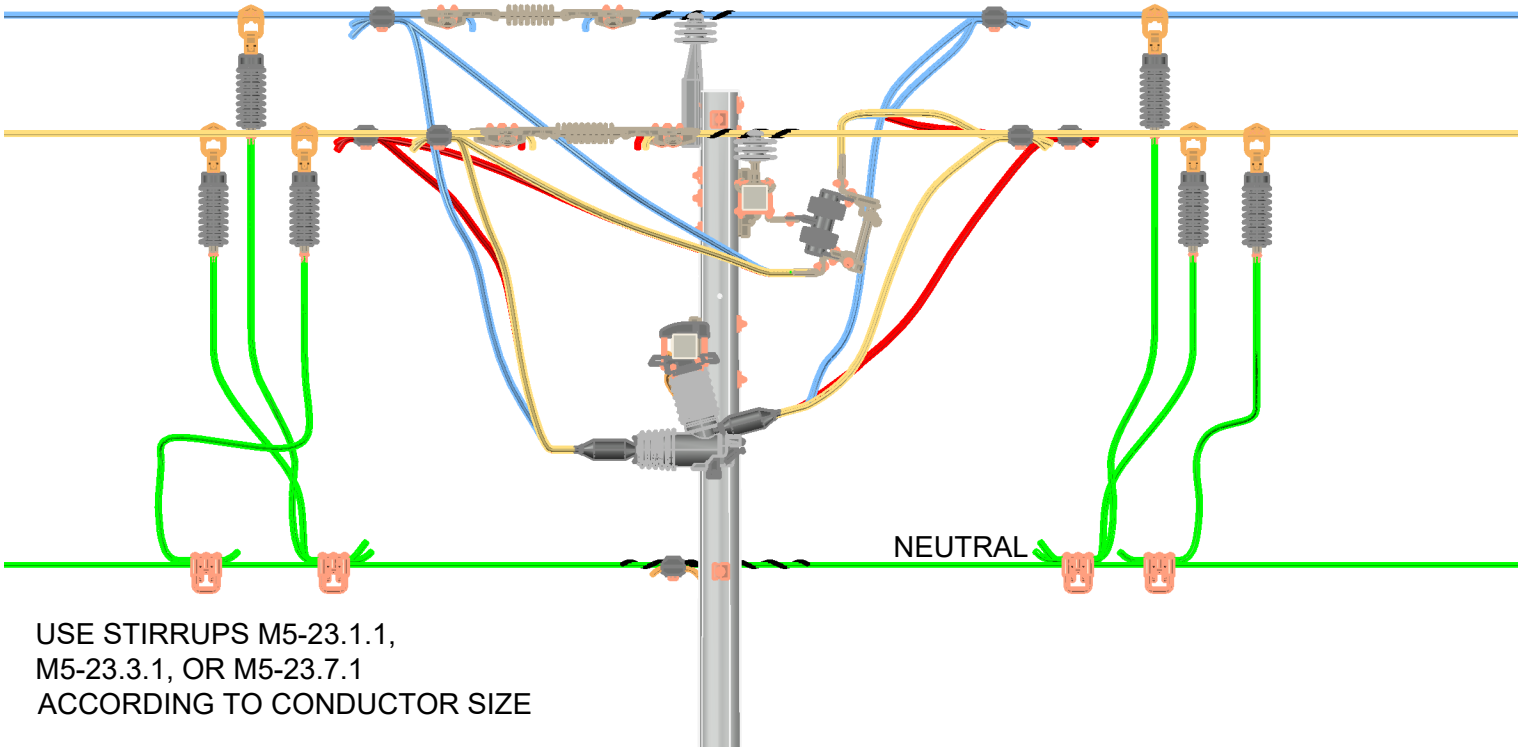


PEDERNALES ELECTRIC
COOPERATIVE, INC.

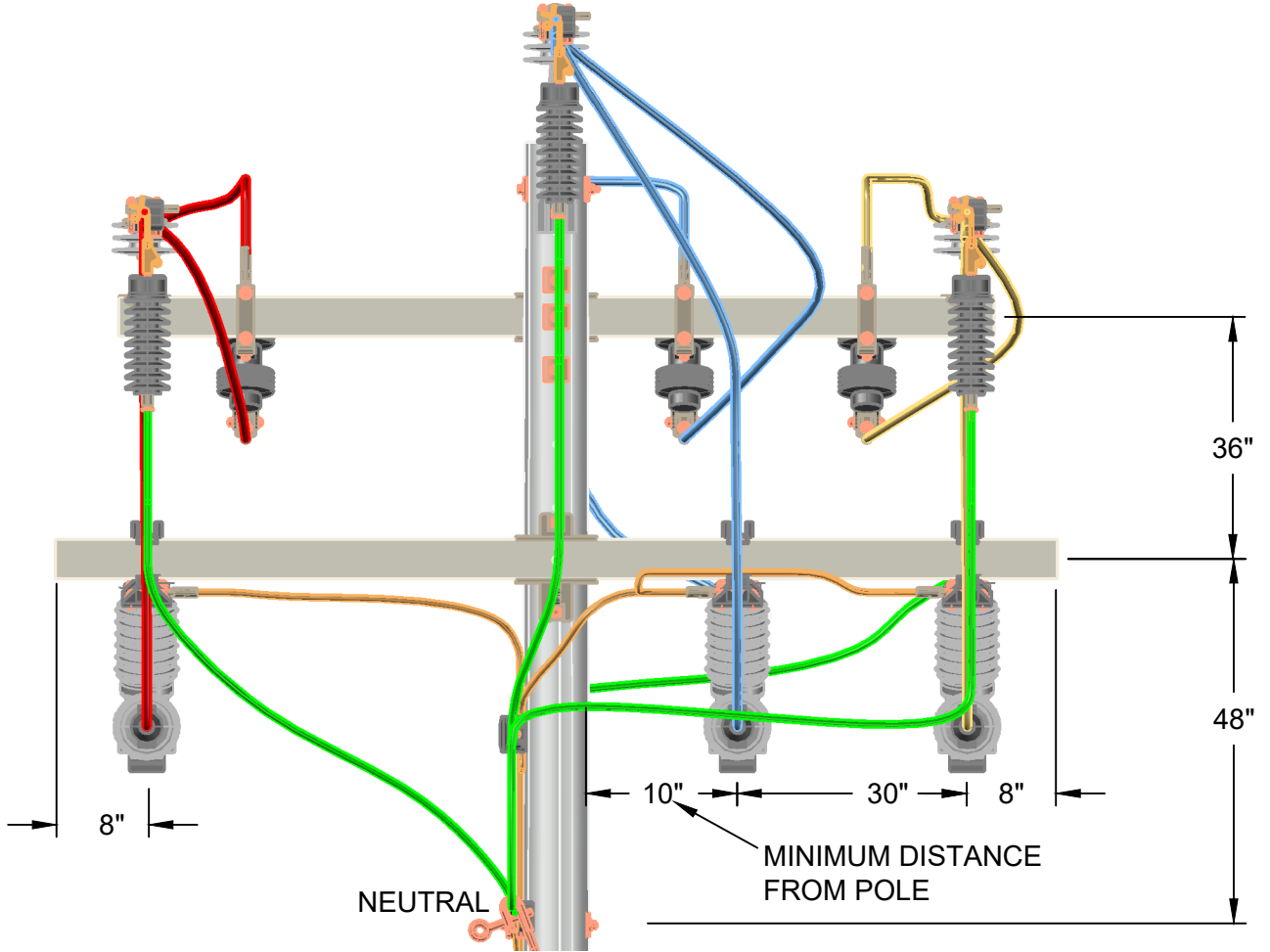
14.4 kV THREE SINGLE-PHASE CIRCUIT
RECLOSERS WITH 600A BYPASS SWITCHES
ON A TANGENT POLE
PAGE 1 OF 3

drawn:	approved:	date:	M3-35
RWC	MMG	10/10/2022	

SIDE VIEW



FRONT VIEW



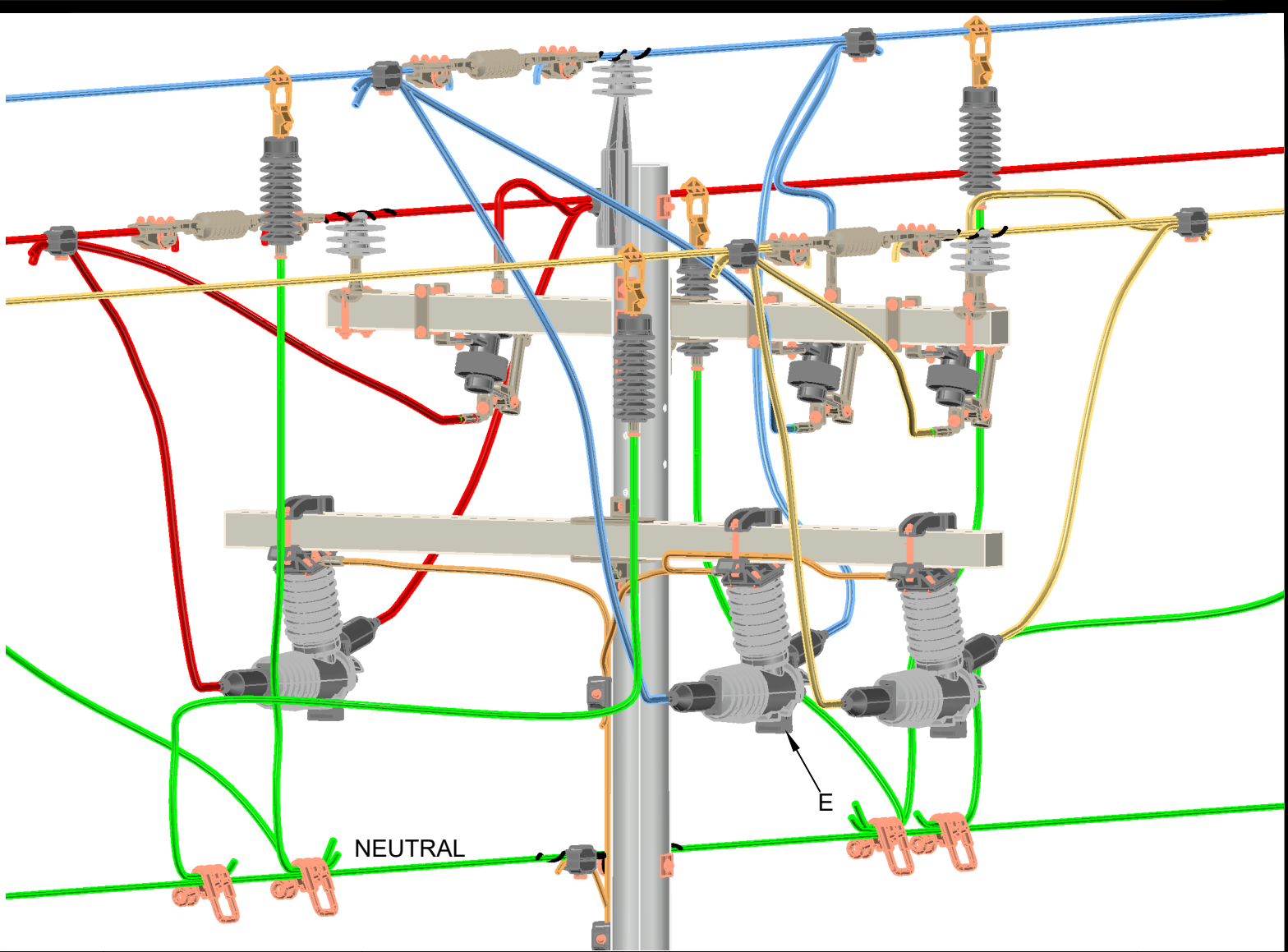
REV | A | DATE | 10/10/2022 | REVISION | ISSUE FOR CONSTRUCTION | BY | RWC | CHK | SSS | APR | MMG



**PEDERNALES ELECTRIC
COOPERATIVE, INC.**

**14.4 kV THREE SINGLE-PHASE CIRCUIT
RECLOSERS WITH 600A BYPASS SWITCHES
ON A TANGENT POLE
PAGE 2 OF 3**

drawn:	approved:	date:	M3-35
RWC	MMG	10/10/2022	



ITEM	MATERIAL NUMBER	DESCRIPTION	QUANTITY
A	2001324	XARM FIBERGLASS 10' TANGENT	1
B	*	BOLT MACHINE 5/8"	AS REQ'D
C	*3000240 or	WASHER SQUARE FLAT 2 1/4" WITH 11/16" HOLE	AS REQ'D
C	*3000237 or	WASHER SQUARE CURVED 4" WITH 15/16" HOLE	AS REQ'D
C	*3000235	WASHER SQUARE CURVED 3" WITH 13/16" HOLE	AS REQ'D
D	*3000153	LOCKNUT 5/8" MF	AS REQ'D
E	2002991	CMR RECLOSER 14.4 kV	3
F	2001511	CONNECTOR HL GA VISE 4/0 STR. - 795 AAC	12
G	*	4/0 CU JUMPERS	AS REQ'D
H	2002687	SWITCH DISCONNECT 25 kV 600A SINGLE INSULATOR	3
I	2000551	INSULATOR SUSP POLY 35 kV CL	3
J	2000248	CLAMP DE S/L STRT - 6 - 2/0 ACSR	6
J	2000243	CLAMP DE 6 - 2/0 ACSR W/BAIL	6
J	2000242	CLAMP DE 336 - 795 ACSR	6

*DENOTES "GRAB BAG" ITEM. ALL BOLT LENGTHS DEPEND ON POLE CLASS.

REV | A | DATE | 10/10/2022 | REVISION | ISSUE FOR CONSTRUCTION | BY | RWC | CHK | SSS | APR | MMG

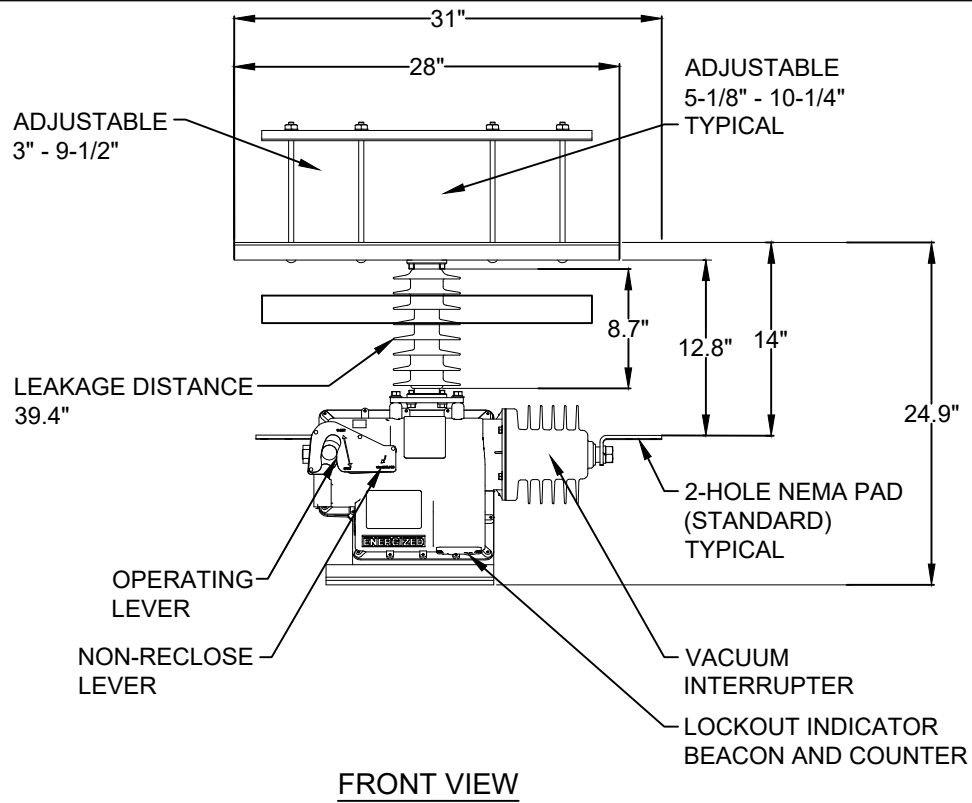


PEDERNALES ELECTRIC
COOPERATIVE, INC.

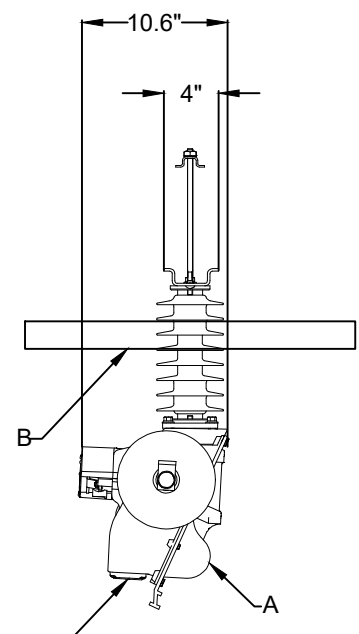
14.4 kV THREE SINGLE-PHASE CIRCUIT
RECLOSERS WITH 600A BYPASS SWITCHES
ON A TANGENT POLE
PAGE 3 OF 3

drawn:	approved:	date:
RWC	MMG	10/10/2022

M3-35



FRONT VIEW



LOCKOUT INDICATOR BEACON AND COUNTER

SIDE VIEW



Michelle Galloway
08/31/2018

ITEM	MATERIAL NUMBER	DESCRIPTION	QUANTITY
A	2000804	RECLOSER 1 PHASE ELECTRONIC	1
B	2001484	WILDLIFE SHIELD 24" RED	1

REV A DATE 08/21/2018 REVISION ISSUE FOR CONSTRUCTION BY RWC CHK APR



CONSTRUCTION ASSEMBLY UNIT

POLE MOUNTED VERSATECH DETAIL

drawn: RWC	approved: MMG	date: 03/23/2018	REC1P-ELEC
---------------	------------------	---------------------	------------