

ITEM	MATERIAL NUMBER	DESCRIPTION	STIRRUP NUMBER
A	2000276	CONN. HOT LINE CC 1/0 - 800 - #6 - 300	
B	2000277	CONN. HOT LINE GP #6 - 400 - #6 - 4/0	
C	2000278	CONN. HOT LINE GP #8 - 2/0 - #8 - 1/0	
D	2000898	STIRRUP HOT LINE #4 F/O	M5-23.4.2
E	2000899	STIRRUP HOT LINE #4 - 2/0 ACSR	M5-23.1.1
F	2000900	STIRRUP HOT LINE 1/0 F/O	M5-23.1.2
G	2000901	STIRRUP HOT LINE 1/0 - 397 ACSR	M5-23.3.1
H	2000902	STIRRUP HOT LINE 336 F/O WITH 1/0 BAIL	M5-23.3.2
I	2000903	STIRRUP HOT LINE 336 F/O WITH 4/0 BAIL	M5-23.3.4
J	2000904	STIRRUP HOT LINE 795	M5-23.7.1
K	2000905	STIRRUP HOT LINE 795 F/O WITH 2/0 BAIL	M5-23.7.3
L	2000906	STIRRUP HOT LINE 795 F/O WITH 4/0 BAIL	M5-23.7.4
M	2000907	STIRRUP HOT LINE CU #6-#4 SOL WITH #1 SOL BAIL	M5-23.1.4

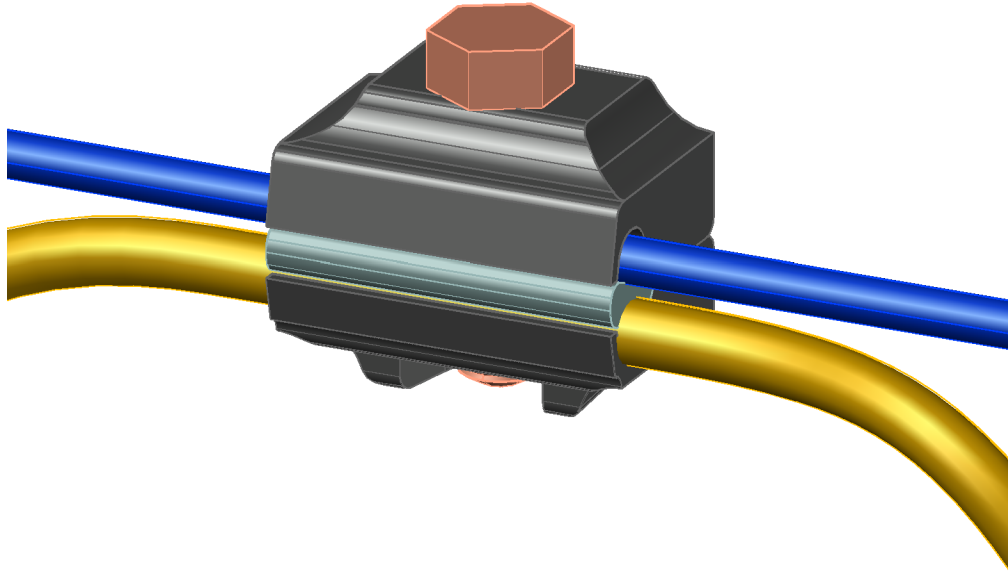
REV | A | DATE | 02/06/2024 | REVISION | ISSUE FOR CONSTRUCTION | BY | RWC | CHK | SSS | APR | MMG



CONSTRUCTION
ASSEMBLY UNIT

CONNECTOR OPTIONS PAGE 1

drawn:	approved:	date:	M5-CONN
RWC	MMG	02/06/2024	



MATERIAL NUMBER	DESCRIPTION
2001505	CONN GA VISE 6 SOL - 4 ACSR
2001506	CONN GA VISE 6 SOL - 1/0 ACSR
2001507	CONN GA VISE 2 ACSR - 4/0 ACSR
2001508	CONN GA VISE 4/0 STR - 336 ACSR
2001509	CONN GA VISE 6 SOL - 336 STR
2001510	CONN GA VISE 336 ACSR - 795 ACSR
2001511	CONN GA VISE 4/0 STR - 795 AAC
2001512	CONN GA VISE 6 SOL - 795 STR
2001513	CONN GA VISE 4/0 STR - 500 STR
2001680	CONN GA VISE 795 ACSR - 795 ACSR
2001740	CONN GA VISE 6 ACSR - 4 ACSR
2001743	CONN GA VISE 6 ACSR - 2 ACSR
2001744	CONN GA VISE 6 ACSR - 1/0 ACSR
2001745	CONN GA VISE 2 ACSR - 4/0 ACSR
2001746	CONN GA VISE 4 ACSR - 4/0 ACSR
2002200	CONN VISE GROUND 3 - 4/0
2002744	CONN VISE GROUND 6 - 1/0
3000716	CONN VISE CC 6-2 6-2
3000717	CONN VISE CC 5-2 5-2

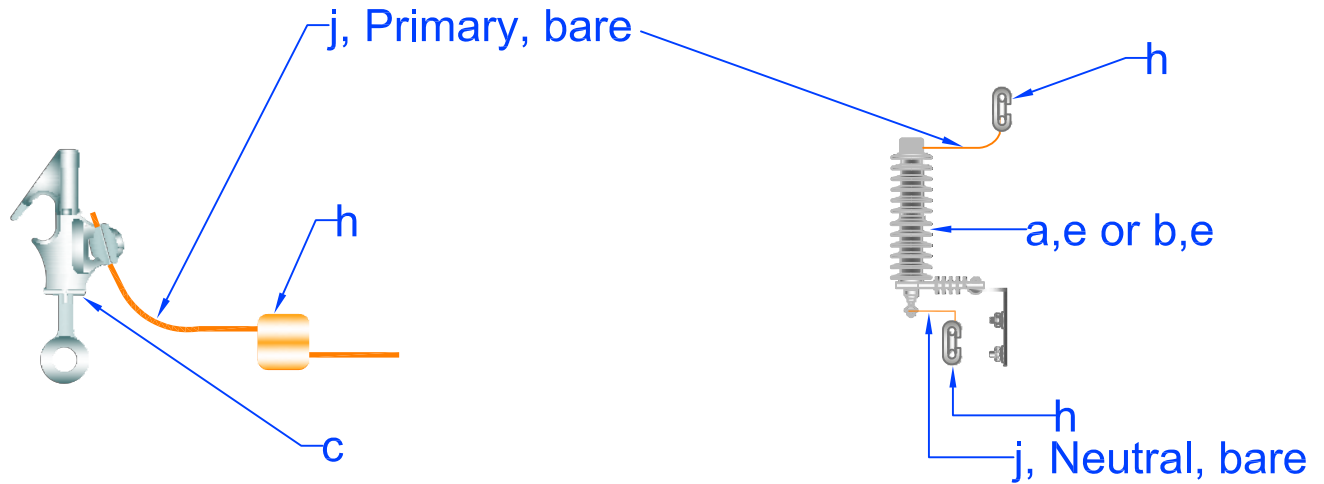
REV | A | DATE | 02/06/2024 | REVISION | ISSUE FOR CONSTRUCTION | BY | RWC | CHK | SSS | APR | MMG



CONSTRUCTION
ASSEMBLY UNIT

CONNECTOR OPTIONS PAGE 2

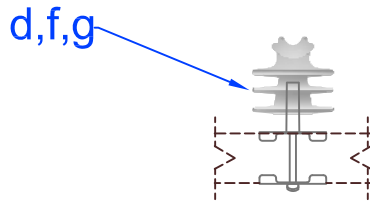
drawn:	approved:	date:	M5-CONN
RWC	MMG	02/06/2024	



M5-1

M5-6 and VM5-6

Install a VM5-6 on at least every third pole in a line. Connect ground side of arrester to the pole ground or on steel poles to the provided grounding lug.



M5-7

Item	Material Number	Item Description	M5-1	M5-6	VM5-6	M5-7
a	2000012	Arrester Dist 10KV Polymer MOV		1		
b	2000014	Arrester Dist 18KV MOV			1	
c	2000278	Conn HL GP 8-2/0-8-1/0	1	1	1	
d	2000541	Insulator Pin Type CL 55-7				1
e	2000495	Guard Bird, Arrester		1	1	
f	*3000240	Washer SQ F 2 1/4				1
g	2000625	Pin Xarm 1 3/8" Thd Clamp Type				1
h	*As required	Connectors	1	2	2	
j	*As required	Jumper	1	2	2	

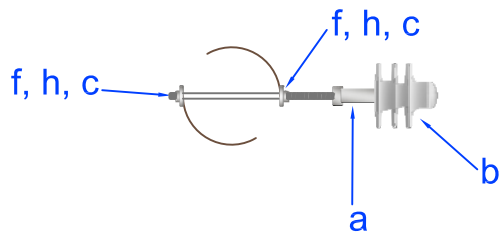
* Denotes "Grab Bag" item.



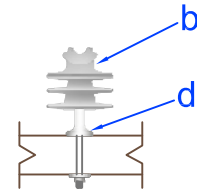
PEDERNALES ELECTRIC
COOPERATIVE, INC.
CONSTRUCTION ASSEMBLY UNIT

Miscellaneous Primary Units

drawn: REB	approved MJB	date: March 16, 2012	M5-1 to M5-7



M5-4

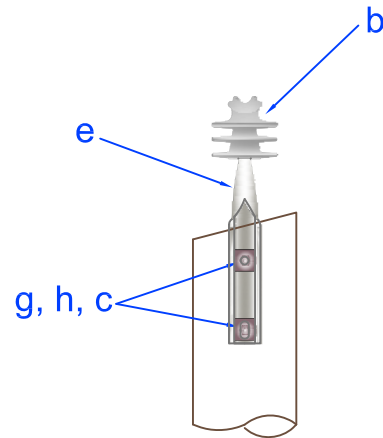


M5-5



M5-3

To be specified for the installation or removal of any single 25kV or 35kV pin type insulator.



M5-2

Item	Material Number	Item Description	M5-2	M5-3	M5-4	M5-5
a	2000001	Adapter Insulator 1 3/8"			1	
b	2000541	Insulator Pin Type CI 55-7	1	1	1	1
c	*3000153	Locknuts	2		2	
d	2000626	Pin Xarm 1 3/8" Thd Reg				1
e	2000621	Pin Pole Top 20" - 1 3/8" Thd	1			
f	*	Bolt Dbl Arming 5/8"			1	
g	*	Bolt Machine 5/8"	2			
h	*3000240	Washer Sq F 2 1/4"	2		2	

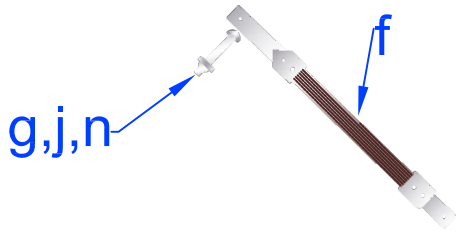
*Denotes Grab Bag Item. All bolt lengths are dependent on pole class.



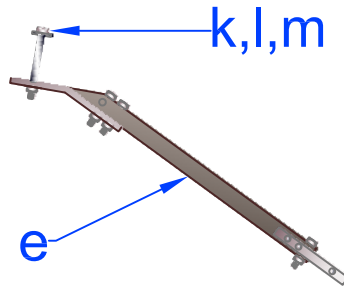
PEDERNALES ELECTRIC
COOPERATIVE, INC.
CONSTRUCTION ASSEMBLY UNIT

Miscellaneous Primary Assemblies

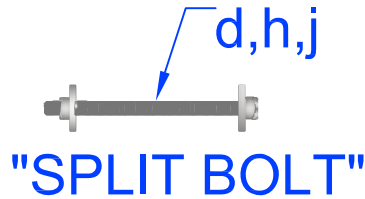
drawn:	approved	date:	M5-2 to M5-5
JBS	MJB	December 22, 2011	



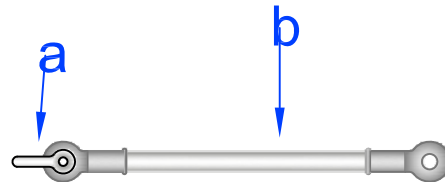
M5-12



M5-13



M5-18



M5-21

Item	Material Number	Item Description	M5-12	M5-13	M5-18	M5-21
a	2000262	Clevis Anchor Shackle Sml				1
b	2000539	12" Fiberglass Extension Link C-TE				1
d	*	Bolt Machine 5/8"			1	
e	2000136	Brace Wood Xarm 60" SPN 18" DRP		1		
f	2000135	Brace Wood Xarm 38" SPN 18" DRP	1			
g	*2000088	Bolt Machine 3/8" x 4 1/2"	1			
h	*3000153	Locknut 5/8" MF			1	
j	*3000240	Washer Sq F 2 1/4	1		1	
k	*2000079	Bolt Machine 1/2" x 6"		1		
l	3000232	Washer Round 9/16"		1		
m	*3000148	Locknut 1/2" MF		1		
n	*3000152	Locknut 3/8" MF	1			

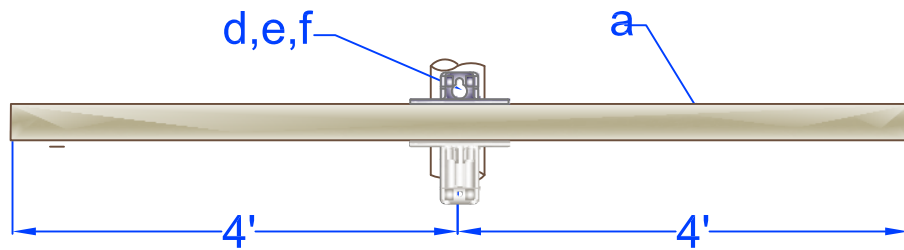
*Denotes Grab Bag Item. All bolt lengths are dependent on pole class.



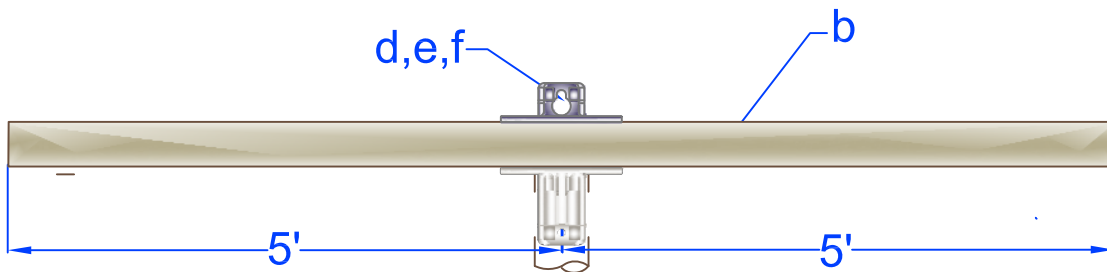
PEDERNALES ELECTRIC
COOPERATIVE, INC.
CONSTRUCTION ASSEMBLY UNIT

Miscellaneous Primary Assemblies

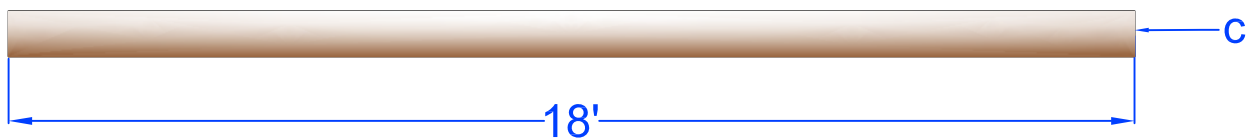
drawn:	approved:	date:	M5-12 to M5-21
REB	MJB	June 20, 2013	



M5-15



M5-16



M5-16-18

Item	Material Number	Item Description	M5-15	M5-16	M5-16-18
a	2001328	Xarm Fbgls 8'	1		
b	2001324	Xarm Fbgls 10'		1	
c	2001306	Xarm 5 3/4" x 7 3/4" x 18'			1
d	*2000092	Bolt Machine 5/8"	2	2	
e	*3000240	Washer Sq F 2 1/4	2	2	
f	*3000153	Locknut 5/8" MF	2	2	

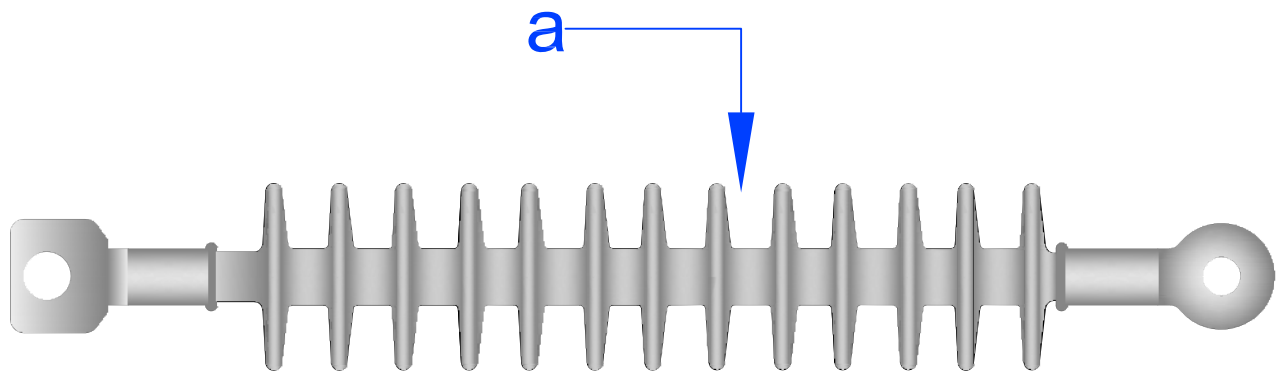
*Denotes "Grab Bag" item. Bolt lengths are dependent on pole class.



PEDERNALES ELECTRIC
COOPERATIVE, INC.
CONSTRUCTION ASSEMBLY UNIT

Crossarms

drawn:	approved:	date:	M5-15 to M5-16
REB	MJB	July 25, 2014	



M5-20

Unit	Material Number	Item Quantity	Item Description
a	2000551	1	Insulator Susp Poly 35KV CL



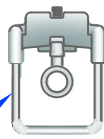
PEDERNALES ELECTRIC
COOPERATIVE, INC.
CONSTRUCTION ASSEMBLY UNIT

Suspension Insulator

drawn:	approved	date:	M5-20
REB	MJB		

Clamp Type Stirrup

M5-23.1.1, M5-23.3.1, or M5-23.7.1

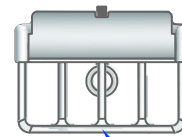


a,d,h

Clamp Type Stirrup

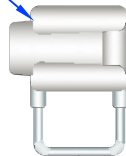
4-Loop

M5-23.1.4



c

g,b,e,f,j,k



Shoot On Stirrup

M5-23.4.2, M5-23.1.2, M5-23.3.2, M5-23.3.4, M5-23.7.3, or M5-23.7.4

Item	Material Number	Item Description	M5-23.1.1	M5-23.1.2	M5-23.1.4	M5-23.3.1	M5-23.3.2	M5-23.3.4	M5-23.4.2	M5-23.7.1	M5-23.7.3	M5-23.7.4
a	2000899	Stirrup HL #4 TO 2/0 ACSR	1									
b	2000900	Stirrup HL 1/0 F/O		1								
c	2000907	Stirrup HL CC 8-2/0-4 Loop			1							
d	2000901	Stirrup HL 1/0 To 397 ACSR				1						
e	2000902	Stirrup HL 336 F/O W/ 1/0 Bail					1					
f	2000903	Stirrup HI 336 F/O W/ 4/0 Bail						1				
g	2000898	Stirrup HL #4 F/O							1			
h	2000904	Stirrup HL 795								1		
j	2000905	Stirrup HL 795 F/O W/ 2/0 Bail									1	
k	2000906	Stirrup HL 795 F/O W/ 4/0 Bail										1

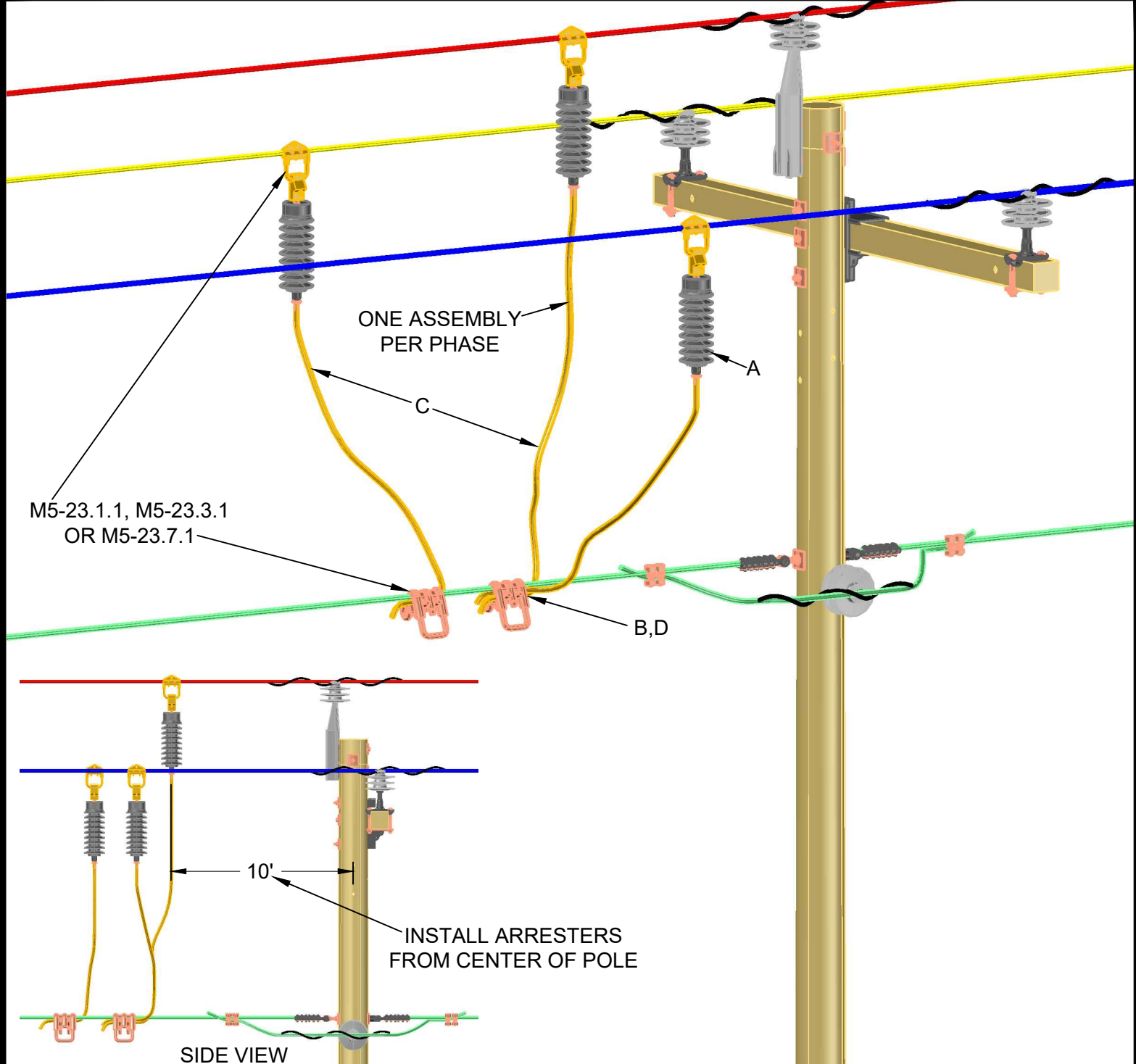


PEDERNALES ELECTRIC
COOPERATIVE, INC.
CONSTRUCTION ASSEMBLY UNIT

Hot Line Stirrups
M5-23.1.1, M5-23.1.2, M5-23.1.4, M5-23.3.1, M5-23.3.2,
M5-23.3.4, M5-23.4.2, M5-23.7.1, M5-23.7.3, M5-23.7.4

drawn:	approved	date:
REB	MJB	March 16, 2012

M5-23



ITEM	MATERIAL NUMBER	DESCRIPTION	M5-61.1	M5-61.3	M5-63.1	M5-63.3
A	2000013	ARRESTER DIST 18 kV OFF POLE	1	3	1	3
B	2000278	CONNECTOR HL GP 8-2/0 8-1/0	1	3		
C	*2001295	WIRE COPPER BARE #6 SOLID SD	5 FT	15 FT	5 FT	15 FT
D	2000277	CONNECTOR HL GP 6-400 6-4/0			1	3

*DENOTES "GRAB BAG" ITEM. USE M5-23.1.1 FOR #4 OR 1/0 ACSR STIRRUP, M5-23.3.1 FOR #336 AAC STIRRUP OR M5-23.7.1 FOR 795 AAC STIRRUP.

REV | A | DATE | 10/06/2020 | REVISION | ISSUE FOR CONSTRUCTION | BY | RWC | CHK | SSS | APR | MMG



CONSTRUCTION
ASSEMBLY UNIT

1Ø AND 3Ø OFF-THE-POLE ARRESTER

drawn:	approved:	date:	M5-61.1 TO M5-63.3
RWC	MMG	10/06/2020	